

EIGHTH STREET

+1'-6"

24'-0"  
LOADING DOCK  
+5'-6"

+1'-6"

LIFT  
+0'-0" TO  
+5'-6"

HVAC DUCTS  
+8'-0" ABOVE  
STAGE

1'-0"

3'-2"

19'-6"

PLATFORM  
ABOVE

DOOR  
8'-10"  
X10'-0"

SIDE-  
WALK  
4'-2"

95 RIGGING SETS

83'-5"

FLY FLOOR +40'

22'-0"  
TO LOCKING RAIL

HSE. CRTN.  
CWT. GUIDE  
SYSTEM

7'-9"

STAGE MGR.  
RIGHT

15'-0"

56'-0"

15'-0"

STAGE MGR.  
LEFT

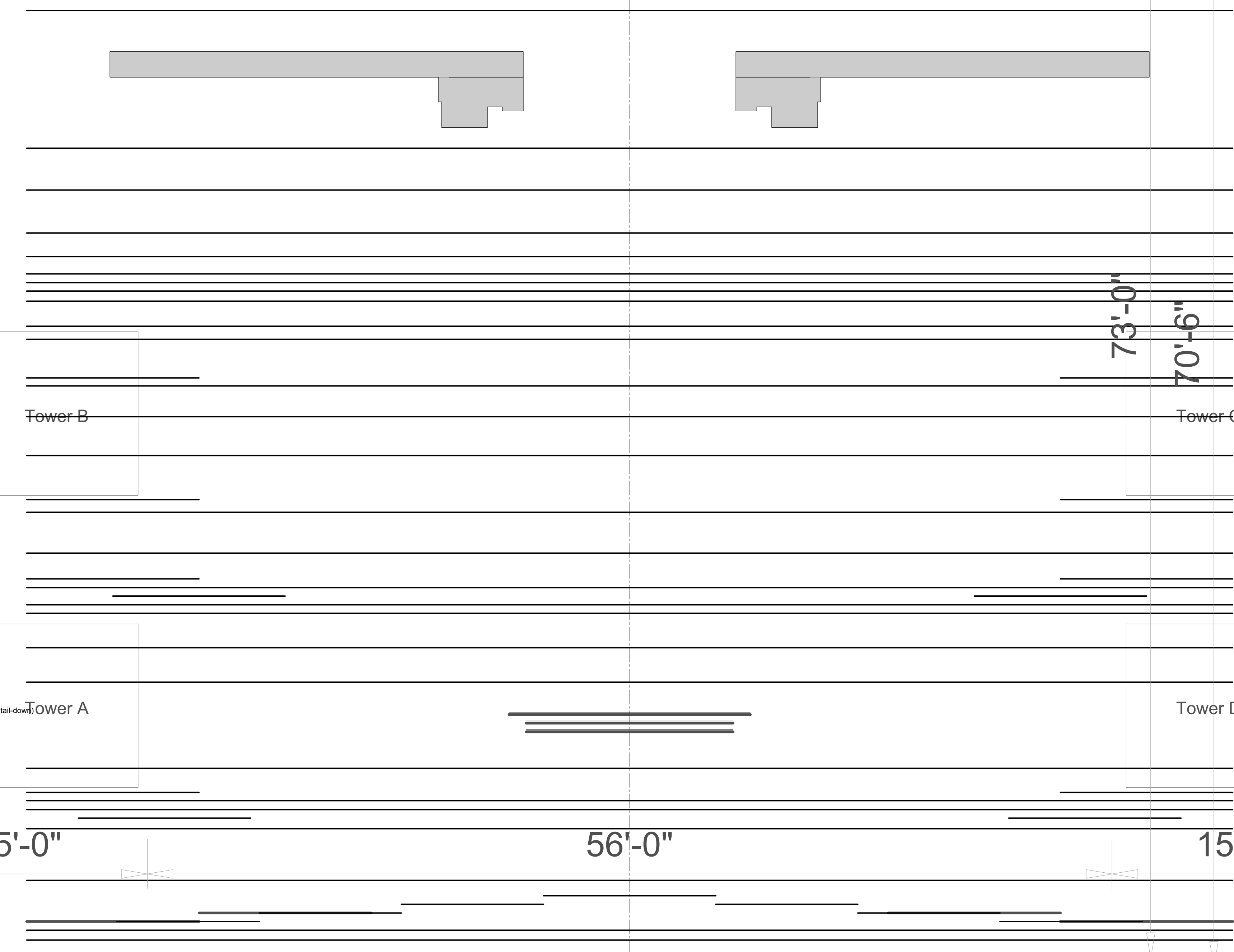
27'-0"

1'-0"

FLY FLOOR +40'

73'-0"

70'-6"



13th Electric  
12th Electric  
11th Electric  
10th Electric  
Nursery Banners  
Garden Gazebo  
Ball Backdrop  
Bed Backdrop  
Tomb Backdrop  
9th Electric  
8th Electric  
Black Legs  
Black Border  
7th Electric  
6th Electric  
Black Legs  
Black Border  
5th Electric  
Black Legs  
Black Border  
#2 Ball Arch  
#2 Bed Arch  
#2 Garden  
4th Electric  
3rd Electric  
Chapel Backing (requires tail-down)  
Chapel Window  
Chapel Window  
2nd Electric  
Black Legs  
Black Border  
#1 Bed Arch  
#1 Ball Arch  
#1 Garden  
1st Electric  
#4 Ball Arch  
#3 Slider  
#2 Slider  
#1 Slider or Black Legs  
Black Border  
MAIN CURTAIN (DEAD)

