

# PITTSBURGH BALLET THEATRE

ANNUAL REPORT 2015-2016



# dear

## PBT Supporter,

If you've driven past Pittsburgh Ballet Theatre this year, you've witnessed the transformation taking place on our campus. In December 2015, the final structural steel beam was lifted into place on our new Byham Center for Dance. And by the end of our fiscal year in June, the Jendoco Construction team had come far enough to install new steel bars in each studio.

Now, with our new studios in full swing, it's already difficult to imagine daily life here without this critical space.

If you know Pittsburgh Ballet Theatre, you know that we've been building toward this moment for nearly 10 years. We knew this expansion was essential to tapping into our potential – to grow with our school, to enhance rehearsal facilities for our company, to broaden dance and wellness opportunities for our larger community.

We want to thank the people and the organizations that have entrusted us with their support and invested in our company and in our vision. This project was completed on time and debt free. And it will make a remarkable difference to our dancers now and those who will come after them. It symbolizes that ballet is not only alive in Pittsburgh, but it's thriving.

Artistically, the theme of growth carried through to our repertory. We introduced a series of ambitious masterworks to our repertory this season with William Forsythe's *In the Middle, Somewhat Elevated*, Jiří Kylián's *Sinfonietta*, James Kudelka's *The Man in Black* and the full-length classic *Le Corsaire*.

The first two ballets, in particular, are direct results of an anonymous donor whose investment has spurred artistic growth and helped take our repertory to the next level. These are works that prove the strength of a company, and we couldn't be prouder of our dancers.

This also was a season for giving voice to the choreographic talents within our own ranks. We celebrated four world premiere works by company dancers this season, including the first to premiere on the main-stage during Terry's 19 seasons as artistic director.


Throughout this report, you will read about more examples of all we've achieved together – accomplishments onstage, in the studio and in programs you may never have known about. Please read on, and discover how we're leveraging the power of our art form to make a difference in our region.

With appreciation,




  
Harris N. Ferris  
Executive Director



  
Terrence S. Orr  
Artistic Director



  
Michael C. LaRocco  
Board Chair

# THE COMPANY

## PRINCIPALS



Amanda Cochrane



Julia Erickson



Alexandra Kochis



Christopher Budzynski



Yoshiaki Nakano



Hannah Carter



Gabrielle Thurlow



Alejandro Diaz



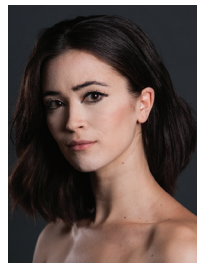
Luca Sbrizzi



Alexandre Silva



Danielle Downey



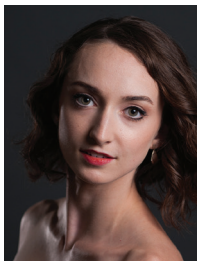
Marisa Grywalski



Olivia Kelly



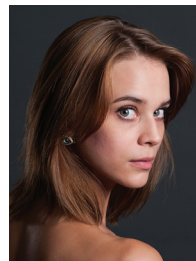
Michaela King



Jessica McCann



Caitlin Peabody



JoAnna Schmidt



Emily Simpson



Casey Taylor



Molly Wright



Diana Yohe



Corey Bourbonniere



Masahiro Haneji



Lucius Kirst



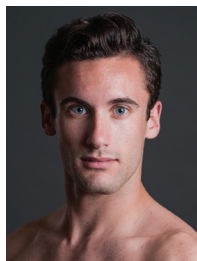
William Moore



Ruslan Mukhambetkaliyev



Joseph Parr



Kurtis Sprowls



Jake Unger



Cooper Verona

## SOLOISTS

## CORPS DE BALLET

6

NATIONALITIES  
REPRESENTED

30

FULL-TIME  
COMPANY DANCERS

45

PERFORMANCES

2015-2016

# Season



"I love to dance and I love to create" wise words from Mr. Nakano from Afterthoughts with @PghBallet I loved the ballet last night! Beautiful.



## MIXED REPERTORY #1 *featuring the PBT Orchestra*

Oct. 23-25, 2015

### FEATURING:

Jiří Kylián's *Sinfonietta*;  
William Forsythe's *In the  
Middle, Somewhat Elevated*;  
and George Balanchine's  
*Western Symphony*

ATTENDANCE: **3,546**

"...the program of modern  
choreographic masters at  
the Benedum Center had  
a collective "wow" factor  
unparalleled in PBT's  
46-year history."

- Pittsburgh Post-Gazette

## THE NUTCRACKER

Dec. 4-27, 2015

ATTENDANCE: **34,190**

"Now into its 14th season,  
(The Nutcracker) is still  
nothing short of magical."

- Pittsburgh Post-Gazette

## PETER PAN

Feb. 12-21, 2016

ATTENDANCE: **13,175**

"Pittsburgh Ballet Theatre's  
revival of the Jorden Morris  
staging of 'Peter Pan' is a  
delightful and action-packed  
entertainment...The dancers  
brought the story vividly to  
life from start to finish."

- Pittsburgh Tribune-Review





@PghBallet *Man in Black* was so creative. Made me feel Johnny Cash's music in my bones. So glad I got to experience that piece.



Still pumped up from @PghBallet "*Le Corsaire*"! The dancing was amazing as expected, but the scenery blew my mind.



## MIXED REPERTORY #2

March 10-13, 2016

### FEATURING:

Antony Tudor's *Jardin Aux Lilas*, James Kudelka's *The Man in Black*, and Yoshiaki Nakano's *A Fellow Feeling*

ATTENDANCE: **2,611**

"*A Fellow Feeling* was an exhilarating conclusion to a stimulating evening of dance, which showcases the excellence and consistency of the company."

- Pittsburgh Tribune-Review



## LE CORSAIRE *with the* **PBT Orchestra**

April 15-17, 2016

ATTENDANCE: **4,226**

"*'Le Corsaire'* was just the right bookend to a season that started with the inimitable tripe bill of Kylián, Forsythe and Balanchine. Throughout this season, PBT has treated audiences to fantastical, fun programs, as well as more grounded, rigorous masterworks. '*Le Corsaire*' was the best of both."

- Pittsburgh Post-Gazette

## BY THE NUMBERS

**489,686**

WEBSITE  
VISITS

**7,307**

FIRST-TIME  
TICKET  
BUYERS

**8,535**

SUBSCRIBER  
TICKETS

**51,513**

PERFORMANCE  
TICKETS

**9,884**

TOURING &  
COMMUNITY  
PERFORMANCE  
PATRONS



FACEBOOK Likes: **30,195**



TWITTER Followers: **11,708**



INSTAGRAM Fans: **5,886**



## ARTISTIC ADVANCES

From the first jarring notes of William Forsythe's *In the Middle, Somewhat Elevated*, the 2015-2016 Season arrested attention. And the 2015-2016 line-up continued to hit high notes along ballet's spectrum of styles. From the boundary-pushing masterworks of Mixed Repertory #1 to the ambitious classical tour de force of *Le Corsaire*, these technique-testing works made a strong statement about PBT's artistic force.



## spotlight on...

### Emerging Talent

In March, Principal dancer Yoshiaki Nakano became the first company member to premiere main-stage work during Terrence S. Orr's 19 years as artistic director. Set to Mozart music, Nakano's *A Fellow Feeling* played to the strengths of 18 of his fellow dancers with an eclectic neoclassical vocabulary. Nakano shared the bill with A-list choreographers Michael Smuin, Antony Tudor and James Kudelka – adding a millennial voice to a wide-ranging repertory program.





## Powerhouse Premieres

PBT added four more hard-hitting works to its repertory this season. The Pittsburgh premieres of William Forsythe's *In the Middle, Somewhat Elevated* and Jiří Kylián's *Sinfonietta* joined George Balanchine's *Western Symphony* for a season opener the Post-Gazette said "had a collective 'wow' factor unparalleled in PBT's 46-year history." The premieres continued in March with James Kudelka's stirring Johnny Cash tribute, *The Man in Black*. In its season finale, PBT made its debut in the virtuosic full-length *Le Corsaire*, a major benchmark for a classical company.

## Record-breaking Nutcracker Run

With 24 performances, over 34,000 audience members and \$1.5 million in revenue, ticket sales for *The Nutcracker* surpassed goal by over \$100,000 this season, topping a six-year uptick. Audience members represented 45 states, three Canadian provinces, three U.S. territories and 481 towns in Pennsylvania, and over 9,400 of them were first-time patrons.

## A Star of the Corps

From the start, Pointe Magazine notes that Corps de Ballet dancer and PBT School alumna Marisa Grywalski has "made quite an impression... (her) line and technique act as beacons, drawing eyes to her in ballets like *Swan Lake*, *La Bayadère* and Balanchine's *Serenade*." Grywalski continued to turn heads in 2015 for her spot-on portrayal of Angry Girl in Jerome Robbins' comedic *The Concert*, cementing her spot on the national magazine's August 2015 top 10 list.

## The Gift of Live Music

This season, the generosity of an anonymous donor brought the full power of the PBT Orchestra to two main-stage productions: *Mixed Repertory #1* and *Le Corsaire*. Live orchestra ranks among the top fundraising priorities for PBT's ongoing Campaign for Pittsburgh Ballet, which seeks long-term endowment funding and more immediate innovation funding to elevate programming now and into the future.



## EDUCATION

PBT's education team brought ballet dancers and concepts into 45 classrooms and 21 community sites this season. From creative movement for kids to programs for people with special needs, the education team works to engage as many people as possible with inclusive experiences that leave people exposed to, inspired by and connected to the art of ballet.



## *spotlight on...*

### **Ballet with the Boys & Girls Club**

New this year, PBT collaborated with the Boys & Girls Club of Western Pennsylvania to encourage youth to explore their artistic sides. Over the summer, students explored the emotion in music and channeled their thoughts and ideas into their own choreography. Based on popular demand, PBT also introduced a Dance Foundations series to provide technique classes complete with donated leotards, tights and ballet shoes for students. Overall, more than 300 students participated, and according to Dominic Panucci of the Boys & Girls Club, the partnership "has been a *great* addition to our after school program. The kids look forward to the classes every week!"



## Buzzing About Ballet

PBT embarked on year two of Buzzword Pittsburgh, a program that helps families expand their children's vocabulary and conversation skills through talk, play and learning opportunities designed by organizations with arts and sciences expertise. This year's programming, which reached nearly 800 participants, included a *Peter Pan* collaboration with Opera Theater of Pittsburgh. Focusing on the buzzword "shadow," children danced the story and later attended PBT's full production of *Peter Pan* with their families. The initiative engages families and organizations in Pittsburgh's Homewood neighborhood and the greater community and is supported by PNC Grow Up Great®.

## Children's Scholarships

PBT's Community Youth Scholarship program entered its third year this season, and awarded eight need-based scholarships



to children from ages 5 to 8. The program aims to broaden access to ballet for young talents who couldn't otherwise access training. The scholarships support students as far as their passion takes them with the option of continuing all the way through the Pre-professional Division.

## Sensory-friendly Experiences

In another important accessibility initiative, the company presented its fourth sensory-friendly ballet with a Feb. 18, performance of *Peter Pan* designed for patrons with autism spectrum disorders, sensory sensitivities and other special needs. This important programming also extended to the studio where nearly 60 students with special needs participated in adaptive dance classes featuring modified choreography from the show.

## BY THE NUMBERS

# 10,741

PEOPLE REACHED THROUGH EDUCATIONAL PROGRAMS

# 3,905

STUDENTS AND EDUCATORS REACHED THROUGH THE STUDENT MATINEE EXPERIENCE

# 1,960

PEOPLE REACHED THROUGH THEATER DISCUSSION SERIES AND BACKSTAGE TOURS

# 701

PEOPLE REACHED THROUGH ACCESSIBILITY PROGRAMS, INCLUDING ADAPTIVE DANCE AND DANCE FOR PARKINSON'S CLASSES

# 5

TYPES OF THEATER ACCOMMODATIONS, INCLUDING AUDIO DESCRIPTION, BRAILLE AND LARGE-PRINT PROGRAMS



# SPECIAL EVENTS



En Pointe. Photo: Kelly Perkovich



Chicago Dancing Festival. Photo: Aimee DiAndrea



Millennial Movement.  
Photo: Duane Rieder



En Pointe. Photo: Kelly Perkovich



Ballet Under the Stars at Hartwood Acres.  
Photo: Kelly Perkovich



Ballet Under the Stars at Hartwood Acres.  
Photo: Kelly Perkovich



Ballet Under the Stars at Hartwood Acres. Photo: Kelly Perkovich



Ballet Under the Stars at Hardwood Acres. Photo: Kelly Perkovich



Chicago Dancing Festival. Photo: Aimee DiAndrea



En Pointe. Photo: Kelly Perkovich



En Pointe. Photo: Kelly Perkovich



Ballet Under the Stars at Hardwood Acres. Photo: Kelly Perkovich



## PBT ON TOUR

In addition to the main-stage 2015-2016 Season in downtown Pittsburgh, PBT performed at touring residencies throughout the region and also marked its first appearance in Chicago – the company's third-largest U.S. tour destination.

*spotlight on...*

### Chicago Debut

In August Pittsburgh Ballet Theatre debuted at the 9th annual Chicago Dancing Festival, joining top dance companies from across the country for a five-day event co-produced by choreographer Lar Lubovitch and Chicago dancer Jay Franke. PBT performed Mark Morris' *Sandpaper Ballet* at the festival's culminating event on Aug. 29, at the Jay Pritzker Pavilion at Millennium Park, sharing the bill with Miami City Ballet, the Joffrey Ballet and other Chicago-area ensembles.

### A 'Millennial Movement'

Three PBT dancers – all under age 30 – unveiled world premiere works May 7, at the Seton Hill University Performing Arts Center in Greensburg. Audiences experienced ballet from three angles with William Moore's *Four Marks*, set to Elvis Presley, Bob Dylan and other artists; Alejandro Diaz's *Physis/Remissio*, set to Bach and Son Lux; and Cooper Verona's *Walking With*, set to Arvo Pärt. The performance marked PBT's seventh in Westmoreland County since launching its residency in the region.

### Ballet Under the Stars

PBT danced under a clear sky and in front of a packed lawn Aug. 16, at the Hartwood Acres amphitheater. The free performance is one of PBT's largest community engagement events of the year, offering craft and dance activities and a full show. The al fresco performance featured classic scenes from *Swan Lake*, *Giselle* and *La Bayadère*, plus new work by Principal Dancer Yoshiaki Nakano. While company members danced onstage, aspiring dancers twirling along under the stars.

# PBT SCHOOL

## spotlight on...



As one of the key drivers for PBT's studio expansion, PBT School has charted consistent enrollment growth over the past 10 years – and its students have displayed extraordinary growth as individuals and artists. This year, PBT School welcomed its largest-ever Intensive Summer Program class, saw three alumni sign contracts with the company and prepared more than 200 students for supporting roles in main-stage company productions.



### Going Pro

PBT Artistic Director Terrence S. Orr signed PBT School graduate students Daniela Moya, of Mexico City, Mexico; Amanda Potts, of Marshall, Texas; and Victoria Watford of Cleveland, Ohio; to the Corps de Ballet this season. More than 20 PBT

School alumni signed contracts with companies across the country.

### Ballet Ambassadors

Beyond their extensive studio training, PBT School's Pre-professional students serve as ballet ambassadors, appearing in costume, in performance and in educational programs around Pittsburgh. This season, students joined Whirl Magazine in raising awareness of cancer and children's health initiatives with pop-up appearances at the Omni William Penn Hotel and Phipps Conservatory. Students also performed in the Pittsburgh Symphony Orchestra's Holiday Pops, on First Night Pittsburgh and at Children's Hospital of Pittsburgh, in addition to joining PBT's education team for instructional demos at schools and libraries throughout the region.

### Repertoire Building

George Balanchine's *Serenade* makes a major addition to any dancer's repertoire. And since Mr. B. originally choreographed it for students, it's a fitting journey for any aspiring dancer. This season PBT School graduate students had the chance learn it from Jerri Kumery, a répétiteur for the George Balanchine Trust, who set the sweeping work on the School's Graduate Program students. Students first performed it in February at West Virginia University's Dance Now! concert and again in Pittsburgh at its May Pre-professional Showcases at Point Park University and Spring Performance at the Byham Theater.

### BY THE NUMBERS

1,105

TOTAL  
STUDENTS

247

OUT-OF-STATE  
STUDENTS

32

INTERNATIONAL  
STUDENTS

255

MAIN-STAGE  
PERFORMANCE  
ROLES FOR  
STUDENTS

189

STUDENTS WHO RECEIVED  
SCHOLARSHIPS AND OTHER  
FINANCIAL ASSISTANCE

The final beam is hoisted onto the Byham Center for Dance at the company's Dec. 23, 2015 Topping Out Ceremony.



## TOPPING OUT 2015

In the thick of the holiday season, PBT celebrated the Topping Out Ceremony for the Byham Center for Dance as the team from Jendoco Construction Corporation hoisted the final structural steel beam into place on Dec. 23. Supporters, including Allegheny County Executive Rich Fitzgerald and Campaign Co-chairs Carolyn and Bill Byham and Dawn and Chris Fleischner, gathered to sign the beam and mark the milestone.

By the end of the fiscal year in June, PBT had reached 77 percent of its \$9.1 million building goal as the building entered the final stages of construction. Although construction is now complete, the company continues to raise support for a reserve fund to safeguard the new space and remains fully focused on the larger Campaign for Pittsburgh Ballet Theatre, which is raising crucial endowment and innovation funding for artistic priorities, including repertoire acquisitions, live music, student scholarships and educational programs.



Allegheny County Executive Rich Fitzgerald signs the beam with a few friends from The Nutcracker.



From left to right: Bill Byham, Artistic Director Terrence S. Orr, Richard E. Rauh, Carolyn Byham, Leslie Fleischner, Dawn Fleischner, Chris Fleischner and Hans Fleischner with special guests from PBT's The Nutcracker.



Campaign Co-chairs Chris and Dawn Fleischner (left) and Carolyn and Bill Byham spoke to the importance of supporting the future of Pittsburgh Ballet Theatre.



Ballet Mistress Marianna Tcherkassky tests out the brand-new ballet bars in May.



513  
GUESTS

\$490,000  
RAISED

## POINTE IN TIME BALL: PBT ELEVATED

The Pointe in Time Ball traditionally sweeps guests into the fantasy of classical ballet with themes inspired by iconic stories like *Swan Lake*. This year, in a point of departure, PBT showcased the innovations that push ballet's boundaries as an art form. Pointe in Time: PBT Elevated welcomed nearly 500 guests into an avant-garde atmosphere inspired by the Pittsburgh premiere of William Forsythe's groundbreaking ballet, *In the Middle, Somewhat Elevated*. PBT co-hosted its annual black-tie gala at the Westin Grand Ballroom with the Hefren-Tillotson family, including Chairs Craig and Jill Tillotson and Carol Tillotson. The event raised more than \$490,000 for key initiatives, like PBT's Community Youth Scholarship program, and other artistic priorities, including repertoire, live music and educational programs.



# FINANCIALS



## PITTSBURGH BALLET THEATRE, INC. STATEMENT OF FINANCIAL POSITION (June 30, 2016)

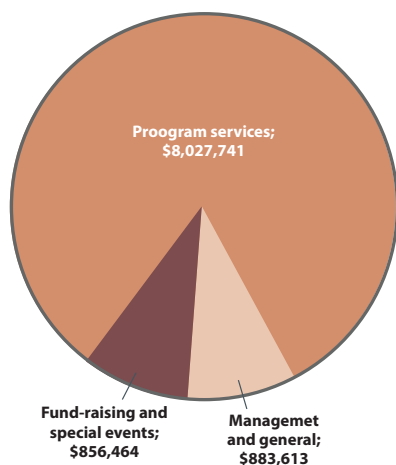
ASSETS	2016
<b>Current Assets</b>	
Cash and cash equivalents	\$ 639,528
Accounts receivable	33,834
Pledges receivable	1,225,380
Prepaid expenses and other current assets	370,981
<b>Total Current Assets</b>	<b>2,269,723</b>
<b>Endowment Assets</b>	
Cash and cash equivalents	1,537
Investments	7,429,129
	<b>7,430,666</b>
<b>Investment Held by Trust</b>	347,186
<b>Pledges Receivable</b>	916,994
<b>Fixed Assets, Net</b>	7,650,146
<b>Production Assets</b>	
(less accumulated amortization of \$550,506 in 2016 and 2015)	264,710
<b>Total Assets</b>	<b>\$ 18,879,425</b>
<b>Liabilities and Net Assets</b>	
<b>Current Liabilities</b>	
Payments due within one year on long-term debt	\$ 124,935
Lines of credit	170,000
Accounts payable and accrued expenses	209,144
Construction costs payable	397,901
Deferred revenue	1,450,711
<b>Total Current Liabilities</b>	<b>2,352,691</b>
<b>Long-Term Debt</b>	175,398
<b>Total Liabilities</b>	<b>2,528,089</b>
<b>Net Assets</b>	
Unrestricted	551,189
Temporarily restricted	7,918,647
Permanently restricted	7,881,500
<b>Total Net Assets</b>	<b>16,351,336</b>
<b>Total Liabilities and Net Assets</b>	<b>\$18,879,425</b>

## PITTSBURGH BALLET THEATRE, INC. STATEMENT OF CASH FLOWS (June 30, 2016)

	2016
<b>CASH FLOWS FROM OPERATING ACTIVITIES</b>	
Changes in net assets	\$ 291,143
Adjustments to reconcile changes in net assets to net cash provided by operating activities:	
Bad debts	257,934
Net realized and unrealized losses on investments	1,158
Contributions and grants restricted for investment in endowment	735,606
Changes in assets and liabilities:	
Accounts receivable	(1,500)
Pledges receivable	(3,256)
Inventory	(10,139)
Prepaid expenses	-
Accounts payable and accrued expenses	44,782
Deferred revenue	(98,063)
	280,864
<b>Net Cash Provided By Operating Activities</b>	<b>1,498,529</b>
<b>Cash Flows from Investing Activities</b>	
Purchase of fixed assets	(3,823,025)
Proceeds from sale of investments	1,147,613
Purchase of investments	(944,990)
<b>Net Cash Used In Investing Activities</b>	<b>(3,620,402)</b>
<b>Cash Flows from Financing Activities</b>	
Line of credit, net	(200,000)
Construction costs payable	314,488
Payments on long-term debt	(120,691)
Contributions and grants restricted for investment in endowment	231,000
<b>Net Cash Provided By (Used In) Financing Activities</b>	<b>224,797</b>
<b>Net (Decrease) Increase In Cash And Cash Equivalents</b>	<b>(1,897,076)</b>
<b>Cash and Cash Equivalents</b>	
Beginning of year	2,538,141
End of year	\$ 641,065
<b>Supplemental disclosure of cash flow information</b>	
Cash paid during the year for interest	\$21,723

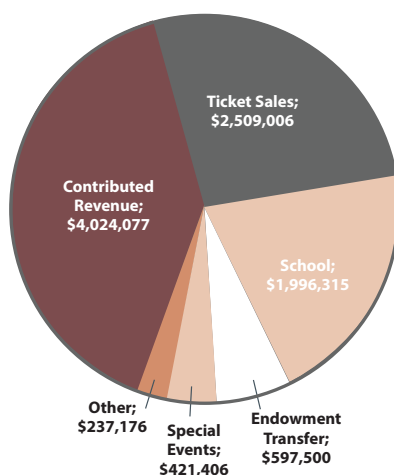
### USE OF OPERATING FUNDS

**Total: \$9,767,818**



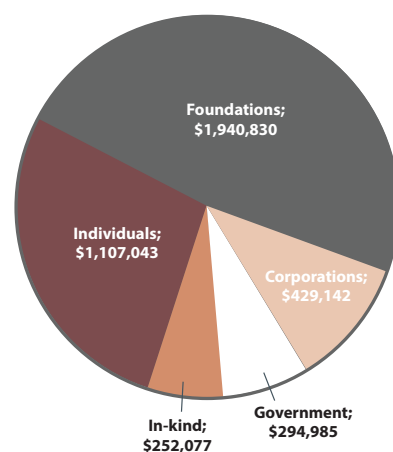
### SOURCES OF OPERATING REVENUE

**Total: \$9,785,480**



### CONTRIBUTED OPERATING REVENUES BY SOURCE

**Total: \$4,024,077**



## PITTSBURGH BALLET THEATRE, INC. STATEMENT OF ACTIVITIES AND CHANGES IN NET ASSETS (June 30, 2016)

**2016**

### Operating Revenue

### Operating Expenses

### Net Realized and Unrealized (Losses) Gains, Interest and Dividends

Changes in net assets before public and private support, releases from restrictions and depreciation on leaseholds, machinery and equipment and land improvements

### Public and Private Support

Changes in net assets before releases from restrictions and depreciation on leaseholds, machinery and equipment and land improvements

### Net Assets Released from Operating Restrictions

Investment Income Spending

Other support

Total Net Assets Released From Operating Restrictions

Changes in Net Assets from Operations

Net Assets Released from Capital Restrictions

Depreciation on Leaseholds, Machinery and Equipment and Land Improvements

Changes In Net Assets

### Net Asset Transfers

Beginning of year

End of year

	Unrestricted	Temporarily Restricted	Permanently Restricted	Total
Operating Revenue	\$5,163,903	-	-	\$5,163,903
Operating Expenses	(9,767,818)	-	-	(9,767,818)
Net Realized and Unrealized (Losses) Gains, Interest and Dividends	-	-	\$ (453,815)	(453,815)
Changes in net assets before public and private support, releases from restrictions and depreciation on leaseholds, machinery and equipment and land improvements	(4,603,915)	-	(453,815)	(5,057,730)
Public and Private Support	2,353,847	\$3,218,593	1,500	5,573,940
Changes in net assets before releases from restrictions and depreciation on leaseholds, machinery and equipment and land improvements	(2,250,068)	3,218,593	(452,315)	516,210
Net Assets Released from Operating Restrictions				
Investment Income Spending	597,500	-	(597,500)	-
Other support	1,670,230	(1,670,230)	-	-
Total Net Assets Released From Operating Restrictions	2,267,730	(1,670,230)	(597,500)	-
Changes in Net Assets from Operations	17,662	1,548,363	(1,049,815)	516,210
Net Assets Released from Capital Restrictions	111,629	(111,629)	-	-
Depreciation on Leaseholds, Machinery and Equipment and Land Improvements	(225,067)	-	-	(225,067)
Changes In Net Assets	(95,776)	1,436,734	(1,049,815)	291,143
Net Asset Transfers	-	250,000	(250,000)	-
Beginning of year	646,965	6,231,913	9,181,315	16,060,193
End of year	\$ 551,189	\$7,918,647	\$7,881,500	\$16,351,336



## ARTISTIC STAFF

**Artistic Director**  
Terrence S. Orr  
**Assistant to the Artistic Director**  
Robert Vickrey  
**Ballet Mistress**  
Marianna Tcherkassky  
**Ballet Master**  
Steven Annegarn  
**Music Director and Conductor**  
Charles Barker  
**Company Pianist**  
Yoland Collin

## EXECUTIVE STAFF

**Executive Director**  
Harris N. Ferris  
**Assistant to the Executive Director**  
Rosemary Sterner

## FINANCE & OPERATIONS

**Director of Operations and Finance**  
Jay Romano  
**Accountant/Human Resources Manager**  
Shelly Swartz  
**Receptionist/Office Manager**  
Victoria Cumer  
**Information Systems Manager**  
Joel LaFleur  
**Building Maintenance**  
Ray Lantzy

## MARKETING

**Director of Marketing and Communications**  
Aimee DiAndrea  
**Ticketing Manager**  
Tanaz Walendziewicz  
**Group Sales Manager**  
Jamie Adams  
**Graphic Design Manager/Staff Photographer**  
Kelly Perkovich  
**Associate Director of Communications**  
Meghan Swartz  
**External Affairs Analyst**  
Christine Sajewski  
**Merchandising Manager**  
Kristen Urban  
**Customer Care Representatives**  
Douglass Bell  
Linda Cunko  
Jessica Marcrum

## DEVELOPMENT

**Director of Development**  
Lois Wholey  
**Special Events Manager**  
Heather Dougherty

**Development Manager**  
Aziza El Feil  
**Foundation Relations and Grants Manager**  
Audra Allen  
**Corporate Relations Manager**  
Robert Jessup

## ARTS EDUCATION

**Director of Education and Community Engagement**  
Christina L. Salgado  
**Manager of Community Programs and Archives**  
Lisa Auel  
**Community Education Coordinator and Instructor**  
Kerra Alexander

## PRODUCTION

**Production Manager**  
Curtis Scott Dunn  
**Stage Manager and Assistant Production Manager**  
Alicia Reece  
**Assistant Stage Manager**  
Nik Nemec  
**Master Carpenter**  
Zachary Dwyer  
**Assistant Carpenter**  
Ronald Cully  
**Properties Master**  
Brad O'Connell  
**Master Electrician**  
Kelli Brannigan  
**Assistant Electrician**  
Christopher T. Barker  
**Wardrobe Supervisor**  
Kathleen Sullivan  
**Transportation Manager**  
Recker Inc.

## COSTUME

**Costumier**  
Janet Marie Groom  
**Costume Assistant**  
Joanna Becker  
**Make-up Artist and Hair Dresser**  
Sherry Debersen  
**Stitchers**  
Donna M. Oxley, first hand  
Kathleen Sullivan  
**Craftsman**  
Svi Roussanoff

## PBT SCHOOL

**Co-Director**  
Marjorie Grundvig  
**Co-Director**  
Dennis Marshall  
**Operations Director**  
Aaron Rinsema  
**Principals**  
Janet Popeleski, Robert Vickrey  
**Operations Manager**  
Rachael Paholich  
**Administrative Coordinator**  
Lindsey Gainey  
**Administrative Support**  
Martha Adams, Mike Sweeney  
**Byham House Director**  
Jenny Spicola

**Byham House Residence Assistant**  
Jamie Rupert  
**Byham House Day-time Supervisor**  
Lelia Broughton  
**Byham House Chef**  
Jeffery Greene  
**Consulting Psychiatrist**  
Antoine Douaihy, M.D.

## SCHOOL FACULTY

**PBT Ballet Master**  
Steven Annegarn  
**PBT Ballet Mistress**  
Marianna Tcherkassky  
**Pilates Coordinator**  
Ann Corrado  
**Full-time Ballet**  
Cynthia Drayer  
**Full-time Ballet**  
Andre Reyes  
**Full-time Ballet**  
Christine Schwaner  
**Children's Division Coordinator**  
Kaila Lewis  
Eun Young Ahn, Kerra Alexander, Allie Castello, Mackenzie Fey, Aaron Ingley, Maureen Lucas, Jessica Marino, Jamie Murphy, Shanna Naider, Tamar Rachelle, Lynn Rescigno, Toma Smith, Kurtis Sprowls, Alexandra Tiso, Aleksandr Zankin and Katherine Zitterbart  
**SCHOOL MUSICIANS**  
**Company Pianist**  
Yoland Collin  
**Full-time Pianist**  
Ellen Gozion  
**Full-time Pianist**  
Bella Khanis  
**Full-time Pianist**  
Juliet Winovich  
Colin Baylor, Jack Hawn, Edward Leonard, David O'Brien, David Robbins, Havilah Sprunk, Justin Wallace, Lisa Wimer and Pengmi Zhang

## MEDICAL STAFF

**UPMC Sports Medicine Orthopedic Surgeons**  
Freddie H.K. Fu, M.D.  
Vonda Wright, M.D.  
**Foot and Ankle Surgeons**  
Dane Wukich, M.D.  
MaCalus Hogan, M.D.  
**Podiatrist**  
Patrick Burns, D.P.M.  
**Certified Athletic Trainer**  
Kathleen Nachazel, LAT, ATC  
**Physical Therapists**  
Erica Coffey, P.T.  
Danielle Hildebrand, P.T.  
Catherine Vargo, P.T.  
**Consultant Sports Nutritionist**  
Leslie Bonci, M.P.H., R.D.  
Supplementary Medical Staff  
**Podiatrist**  
Lisa Watters, D.P.M.  
**Chiropractor**  
Jeffrey Cohen, D.C.

## PITTSBURGH BALLET THEATRE ORCHESTRA

**Conductor**  
Charles Barker,  
*music director & principal conductor*  
**Violin I**  
Charles Stegeman, *concert master*  
Rachel Stegeman, *associate concert master*  
Larry Yagello  
Keiko Rushlander  
Joan Zolkowicz  
Jennifer Madge  
Mary Beth Schotting  
**Violin II**  
Raymond Eichenmuller, *principal*  
Anne Jackovic  
Eleanor Cameron  
Rochelle Agnew  
Juan Jaramillo  
Frank Ferguson  
**Viola**  
Jennifer Gerhard, *principal*  
Louise Farbman  
John McCarthy  
Justin J. Johnson  
**Cello**  
Elisa Kohanski, *principal*  
Paula Tuttle  
Joseph Bishkoff  
Paul Critser  
**Bass**  
Jeffrey Mangone, Sr., *principal*  
Andy Kohn  
Robert Skavronski  
**Flute/Piccolo**  
Beverly Crawford, *principal*  
Barbara O'Brien  
Thomas Godfrey  
**Oboe/English Horn**  
Robin Driscoll, *principal*  
Cynthia Anderson  
**Clarinet**  
Mary Beth Malek, *principal*  
Jack Howell  
**Bassoon**  
Linda Morton Fisher, *principal*  
Don Hollis  
**French Horn**  
David Lintz, *principal*  
Matthew Litterini  
Marie Claude Driscoll  
Scott Bohannon  
**Trumpet**  
Charles Daval, *principal*  
Karen Sloneker  
David Anderson  
**Trombone**  
Peter Howell, *principal*  
Keith Jackson  
Glenn Wayland  
**Tuba**  
Phillip Van Ouse, *principal*  
**Timpani**  
Jack Dilanni, *principal*  
**Percussion**  
Albert Wrublesky, *principal*  
Jan Fung  
**Harp**  
Nuiko Wadden  
**Piano**  
Yoland Collin  
**Orchestra Manager**  
Frank Ostrowski

## ANNUAL FUND SUPPORTERS

### Foundation Donors

Anonymous  
Adams Foundation  
Allegheny Foundation  
Bartlett Foundation  
Claude Worthington Benedum Foundation  
The Benter Foundation  
Meyer & Merle Berger Family Foundation  
Broadridge Foundation  
The Jack Buncher Foundation  
Calihan Foundation  
The Anne L. & George H. Clapp Charitable Trust  
The Clarke Family Foundation  
The Colcom Foundation  
The Eden Hall Foundation  
Fair Oaks Foundation  
The Ferrier Family Legacy Fund at the CFWC  
Fidelity Charitable Gift Fund  
The Fine Foundation  
Henry C. Frick Educational Fund of The Buhl Foundation  
The Grable Foundation  
The Heinz Endowments  
Audrey Hillman Fisher Foundation  
Hillman Foundation  
Elsie H. Hillman Foundation  
Jewish Federation of Greater Pittsburgh Jewish Community Foundation  
Ladies Hospital Aid Society  
The Laurel Foundation  
McFeely-Rogers Foundation  
Katherine Mabis McKenna Foundation  
Richard King Mellon Foundation  
Charles M. Morris Charitable Trust  
W.I. Patterson Charitable Fund  
The Pittsburgh Foundation  
The Pollack Family Fund of the Ayo Charitable Foundation  
Ryan Memorial Foundation  
The Jerome Robbins Foundation  
The Sampson Family Foundation  
James M. and Lucy K. Schoonmaker Foundation  
David S. & Karen A. Shapira Foundation  
Snee-Reinhardt Charitable Foundation  
The Shubert Foundation, Inc.  
R. P. Simmons Family Foundation  
Edith L. Trees Charitable Trust  
Wagner Family Charitable Trust  
Community Foundation of Westmoreland County

## PATRON'S CIRCLE

### Trustees' Society

**\$25,000 and up**

Anonymous  
Vivian & Bill Benter  
Dawn & Chris Fleischner  
The Posner Family  
Mr. Richard E. Rauh

### Chairman's Society

**\$10,000-24,999**

Mr. Sean Cassidy

Audrey & Timothy Fisher  
Dona & Tom Hotopp  
Mr. & Mrs. David F. Tuthill  
Signe & Winthrop Watson

### Director's Society

**\$5,000-9,999**

Mr. Edwin H. Beachler, III  
Christine & Brian Beattie  
Walter J. Blenko Jr.  
Barbara H. Bott & Robert L. Jennings  
W. S. & Beth Brown  
Dr. & Mrs. William C. Byham  
Barbara & Gerald Chait  
Dan & Betsy Cwenar  
Jamini V. Davies  
Debra H. Dermody  
Mr. & Mrs. Kaye R. Desch  
Mary Jane Edwards\*\*  
Mr. J. Tomlinson Fort  
Mr. & Mrs. Robert A. Gleason, Jr.  
Mr. Michael J. Haver  
Dr. Paul Hennigan  
Mr. & Mrs. Jeffrey D. Himrod  
Donald Johnston  
Douglas Kreps & Constance Reiter Kreps  
Michael & Jennifer LaRocco  
Shanon & Demetrios Mahramas  
Maxine & William Block  
Mary L. McKinney  
Mr. & Mrs. Stephen H. McKnight  
Sarah Meehan  
LeRoy & Ann Metz  
Kathleen Midot  
Jacqueline & Jeffrey Morby  
Mr. & Mrs. Terrence S. Orr  
Joan & Robert Peirce  
Christine & Mark Popovich  
Mr. & Mrs. James E. Schilling  
Cindy & David Shapira  
Lisa Simone & Paul Shea  
Susan & Vincent Silvaggio  
Mr. Norman F. Stephen  
Charlotte M. Stephenson  
Shelley & James Taylor  
Becky & Herb Torbin  
Colleen & Denny Travis  
Hilary S. Tyson  
John Wasko in memory of Claudia Wasko  
Markus & Donna Weber  
Robert Wyche

### Choreographer's Society

**\$2,500-4,999**

Anonymous (5)  
Mr. William P. Anderson  
Mr. Philip M. Bratten\*\*  
David L. Buchta & Harmon K. Ziegler\*\*  
Julie, Dale & Carly Clifton  
Kevin Ho, MD\*\*  
Leo & Marge Kane\*\*  
Mr. & Mrs. Paul M. Kochis  
Dr. Melonie Nance  
Mr. & Mrs. E. Kears Pollock  
Briony Raymond  
Lisa Salati & Brad Hillgartner  
Pauline Santelli  
Robert & Sharon Scabassi  
Mr. Alan H. Shadgett  
Mark Steele  
Mr. & Mrs. Fredrick A. Steward  
Mr. & Mrs. Thomas M. Teti  
Jon & Carol Walton

## FRIENDS OF PBT

### Repetiteur's Society

### \$1,500-2,499

Dr. Yoshio Arai  
Mr. & Mrs. Joseph L. Calihan  
Dr. & Mrs. Adam W. Hahn\*\*  
Ms. Karen Block Johnese  
Mrs. Karen Johnese  
Dr. & Mrs. Wilfred T. Rouleau\*\*  
Dr. Lori Shutter & Mr. Mike Abney  
Kim Swisher  
Dr. Michael J. White & Mr. Richard LeBeau

### Ballet Master's Society

**\$1,000-1,499**

Anonymous  
Ruth Bachman  
Richard Baker & Lila Cornell\*\*  
Dr. Vitasta Bazaz & Sheen Sehgal in memory of Dr. Kuldeep Sehgal  
Mr. & Mrs. Frederick K. Beard  
Donald & Mary Block  
John Botti  
Dr. & Mrs. John A. Burkholder  
Mr. & Mrs. Fiore W. Coppola  
Dr. Verna Corey  
David & Linda Csont  
Mr. & Mrs. Roy G. Dorrance  
Jan & Howard Engelberg  
Mr. & Mrs. Milton Fine  
Mr. William R. Forsythe\*\*  
Mr. & Mrs. Edward Friedman  
Mary Ann & Edward Graf  
Dr. R. Donald Hoffman\*\*  
Mr. & Mrs. Joseph M. Jackovic  
The Burton L. & Ruth Hirsch Memorial Endowment Fund  
Arthur J. Kerr, Jr.\*\*  
Joe & Jennifer Klimchak\*\*  
Ms. Peggy C. Knott  
Janet Kurtz Seifert  
Ted & Mary Lou Magee  
Robert & Carol Meeder  
Elizabeth R. Mertz  
Todd & M'Lisa Oravitz  
Kathleen Sandoe & Daniel Ready\*\*  
Mr. John J. Scanlan  
Mr. & Mrs. Preston Shimer  
Mrs. Theresa V. Snively in memory of Christian M. Snively, III  
Mr. & Mrs. Larry Souleret  
Mr. & Mrs. Sternberger  
Ms. Maria A. Swanson  
Rachel & Lowell Swarts  
Mr. & Mrs. George Szakach  
Judith & Steve Thomas  
Dr. Adele Towers  
Pamela & Nish Vartanian  
Joan Vondra and Tom Chang  
Mr. & Mrs. Robert K. Wagner  
John & Irene Wall\*\*  
Rita & Carl J. Walzer\*  
Stephen Webster  
Jeanne Hanchett & Phillips Wedemeyer  
Mrs. Lois M. Wholey  
Beth Newbod & Pat Winkler

### Principal's Society \$500-999

Anonymous (4)  
Nancy & Charles Anderson  
Linda & David Assard  
Gregory & Lisa Baker  
Mr. Richard Barney  
Prof. Barbara Baur  
Dr. & Mrs. William A. Belden  
Mr. & Mrs. Henry S. Beukema, Sr.  
Joan Miles & Clifford Bob\*\*  
Dr. Lawrence M. Borland  
Ms. Susan C. Brody  
Ellen Still Brooks in honor of Harris &

Janet Ferris, Steve Webster, & Mary McKinney  
Mr. & Mrs. Marvin A. Brown\*\*  
Mrs. Margaret K. Carpenter\*\*  
Judy & Michael Cheteyan Educational & Charitable Foundation  
Mr. & Mrs. Christopher Cochrane  
Cynthia & Bill Cooley  
Patricia Crumrine & Milton Burkart  
Mrs. Zelda Curtiss  
Jamini Vincent Davies in honor of Bob Vickrey & Joel LeFleur  
Timothy J. DeSanto  
Mr. Andrew Dsida  
Shelly & Darryl Duncan  
Ms. Suzanne Flood  
D.T. Gruelle Specialty Logistics  
Ms. Ann S. Grupe  
Mr. John F. Hartnett\*\*  
Katharine Hillman  
John Hooper & Gail Pesyna\*\*  
Libby & Purnell Jones  
Tom & Suzanne Kendig  
Sydelle Kessler  
Annette L. Kline  
Ms. Marilyn Koch\*\*  
Anna Singer & Donald Kortlandt  
Michelle Ann Duralia  
Mike & Hope McCague  
Ms. Mary A. McDonough  
Mr. Paul V. Miller  
Betty & Granger Morgan  
Susan & James Morris  
Mary Catherine Motchar  
Ms. Patricia Kay Nichols  
Ms. Renee Nicholson  
Mr. & Mrs. Kenneth Nolan  
Roseanne Oliverio MD  
Cathy & Dennis Rafferty  
Linda P. Roberts, MD  
Mrs. Frances Kelly  
Sandoe-Ready Fund  
Dr. Paul Shay & Dr. Diana K. Lemley  
Dennis & Susan Slevin  
Peter & Susan Smerd\*\*  
Dr. & Mrs. John C. Barber  
Ms. Sara G. Steelman  
Lowell & Jan Steinbrenner  
Mr. Sherwood B. Stephens  
Be-Be & Hal Stroebel  
Dr. Bernard G. Swegman  
Sydelle & Laibe Kessler Philanthropic Fund of the Jewish Federation  
Janice Taylor & Patrick Condo  
Ms. Carla J. Vrsansky  
Mr. W. L. & Dr. Barbara H. Ward  
Barbara & Richard Webb  
Ellen Mandel & Lawrence Weber  
Mr. & Mrs. Joel R. Weinstein  
Ben & Jonella Williamson  
Ms. Alice Wroblewski  
Dorothea K. Zikos

### Soloist's Society \$250-499

Anonymous (2)  
Leanne S. & Paul M. Adamo\*\*  
Phyllis & David Armstrong  
Mr. Thomas G. Black\*\*  
Mr. William M. Bradley  
Gwyneth S. Brautigam\*\*  
Rev. Ronald & Mrs. Linda Breight\*\*  
Susan & William Brewer  
Bruce D. & Treasure Sachnoff  
Charitable Family Fdn  
Richard Cannon  
Gail & Ramsey Coates  
The Cole Family

Judith & Robert Cunningham  
Marion Damick  
Mr. & Mrs. Patrick D. Deem  
Edward U. Depersis  
Mr. Harold Dixler in memory of Norma Dixler\*\*  
Mr. & Mrs. Richard E. Dixon  
Mr. Robert S. Douds, Jr.  
Mrs. Kathleen Duffy in honor of The Tiara Ladies: Andy, Anne, Barb, Betty, Elva, Marylou & Linda  
Patricia K. Eagon & James E. Stafford  
Ms. Laura E. Ellsworth & Mr. Bruce Teitelbaum\*\*  
Harry & Liz Finklea  
Mrs. Iris R. Flinn  
Mr. Lee B. Foster in honor of David Tuthill  
Jeanne Gelman  
Dr. Terri F. Gould  
Mary Ann Graziano  
Dr. Charles B. & Dr. Susan I. Greenberg\*\*  
Ms. Patricia Harris  
Mr. & Mrs. Steven S. Hausman  
Mr. & Mrs. Thomas J. Herward  
Mr. Henry L. Hillman in memory of Loti Falk  
David & Carolyn Hills  
Mr. & Mrs. John Hombosky  
Ms. Anne Jackovic  
Mrs. Alice Jane Jenkins  
Mr. Robert A. Johnson  
Dr. Morton Kaplan  
Ms. Arlene L. Karg  
Mr. & Mrs. Vaughn Kiger  
Charles & Nancy King  
Mrs. Paula M. Lockhart\*\*  
Dr. & Mrs. Gregory Long  
William & Mary Markle\*\*  
Dr. Leena Matthews  
Sidney McBride  
Mr. & Mrs. Sean M. McLaughlin  
Kevin & Kristen McMahon  
Mrs. William Metcalf, III  
Ms. Elizabeth M. Meyer  
Dr. & Mrs. John M. Mikulla  
John R. Milam  
Mrs. Cynthia Holden Mock  
Drs. Jennifer & Moe Momen  
Dr. & Mrs. James D. Moore  
Carol Mueller in honor of Lois Wholey  
Jo Ellen & Barry Numerick  
Ms. Patricia A. Olean  
Mr. & Mrs. James J. O'Neill  
Mr. Elliott S. Oshry  
Ms. Ann Ostergaard  
Betsy Peitz  
Janet Peters  
Ellen & Robert Piper  
Ms. Cheryl A. Proie  
Drs. James & Roberta Cain and Family  
Mr. & Mrs. James H. Rich  
Mona & Bob Riordan  
Ms. Doris K. Robertson  
Jane Roesch  
Karen Scansaroli  
Diana Scott\*\*  
Dr. Ralph T. Shuey & Rebecca L. Carlin  
Gail Shumway  
Dr. & Mrs. Richard Sieregij  
Yvonne Gail Stack  
Mr. & Mrs. Raymond H. Steeb III  
Mr. Daniel Stern  
Arthur & Barbara Stewart  
Hayes & Patricia Stover  
Robert L. Taylor\*\*  
Annabel Timms  
Kaaren Tintori  
Mr. & Mrs. Paul H. Titus

Dr. & Mrs. Mordecai Treblow\*\*  
Mica VanFossen  
Norman Wien  
Frank & Heidie Wenzel  
Mrs. Patricia A. Williams  
Ms. Janet L. Yates

### Barre Society \$100-249

Anonymous (10)  
Dr. Roger Abrahams  
Mr. & Mrs. Gary Acinapura  
Ties & Jorunn Allersma  
Lynette Anderson  
Joan Frank Apt  
Mr. & Mrs. Mike Aquilina  
Ms. Mary H. Boyle  
Mr. James R. Atwell  
Joseph S. Auria\*\*  
Anna & Thomas Balestrieri in memory of Robert R. Walsh  
Mr. Todd Barnhart  
Alfred H. Baxter  
Edward Beals  
Julie Beck  
James Bendel  
Mr. Joseph S. Beri  
Dr. & Mrs. Jose E. Bernardo  
Ann Beyer Vaughn\*\*  
Marion & Harold Bittner\*  
Ms. Carol Faulk Blesser  
Eva Tansky Blum  
Bronwell Berg Bond  
James & Kathy Bouril  
Robert & Kathleen Boykin  
Jill Brierecheck  
Jean Brown  
Mr. & Mrs. Joan Brzana  
Mr. Jim Cain  
James & Stephanie Callahan  
Mr. Richard Callendar  
Ms. Lynn Campbell  
Arnold J. Capelman, Jr.  
Ms. Jacquelyn Cavanaugh  
Mrs. Melinda Cavis  
Gil & Diane Celedonia  
Connie & Michael Cesario\*  
Woody & Joanne Chetlin  
Mr. & Mrs. Thomas A. Christopher  
Mrs. R. V. Ciccone  
Mr. & Mrs. S. David Cifurak\*\*  
Ms. Lori L. Clawson  
Rosemary K. Coffey  
Mr. Hal Coffey  
Frank & Georgia Colangelo  
Mr. James Colker  
Margaret Conroy  
Genevieve D. Cook\*\*  
Karen & John Cooper  
Kathy Cooper\*  
Ms. Janet M. Corpora  
Hanley Cox  
Nelson & Carol Craigie\*\*  
Mr. & Mrs. Peter Crescimanno  
Mr. & Mrs. Crisante  
Virginia Criss  
Mr. & Mrs. J. Kent Culley  
Dr. & Mrs. Robert David\*  
Christi Davis  
Jaclyn & Michelle Day\*  
The Dell Family  
James Demarco  
Ms. Debra S. DiGianna  
Ms. Irene J. Dinning  
Mr. & Mrs. Richard DiSalle  
Ms. Ruth R. Donaldson  
Elizabeth G. Donohue

Dr. Robert T. Downs\*\*  
Ann Dugan\*  
Ron & Dianna Dunnington\*  
Ms. Leslie Dupal\*  
John & Angela Durham  
Ms. Laura Emmerling\*  
Ms. Joyce W. Fako  
Miguel Feitosa\*  
Ms. Heidi Fenton  
Dr. & Mrs. Robert E. Fidoten  
Mr. & Mrs. Richard L. Fischer  
Susanne Fox  
Mr. Carl B. Frankel  
Ken and Lynne Frankenberg\*  
Dr. Joseph Furman &  
Dr. Reva Rossman  
Diana M. Galbraith  
John & Kerry Gallick  
Judge Robert Charles Gallo in  
memory of Violet Caridi Gallo  
Mr. & Mrs. Ronald E. Gebhardt  
Miss Barbara Gehshan\*  
Mr. & Mrs. Robert Gentilcore  
Mr. & Mrs. Craig A. Gipson  
Mrs. Mary Ann Gleason  
Cindy & Mark Goodman  
Anne Jane Gray & David Carr  
Anne R. Gregory\*  
Ms. Andrea J. Grennan  
Joyce Candi Grove  
Lisa M. Guadagnino  
Ms. Barbara Guger  
Dr. Marsha Haley  
Sherri Hallgren and Mark Wyeth\*  
Melody A. Hannegan  
Susan & Wilfred Hansen  
Sandra M. Harkins  
Ms. Christine A. Hartung  
Gordon Haw  
Kim R. Newby  
Bruce & Beverly Hayden  
Fred & Audrey Heidenreich  
Alan Helgerman &  
Sandra Lapietra\*  
Janet Helms  
Ms. Mary Carole Herbig  
Ms. Janice Hixson  
Mr. Robert Hossli  
Charlotte Hott  
L. George Houpt  
Sharon L. Hrabovsky, MD &  
Mr. Bob C. Serafin\*  
Michael Hunter & Scott J.  
Donaldson  
Dr. & Mrs. Charles M. Hyde  
Christopher Imes  
Mr. & Mrs. Timothy C. Jablon\*\*  
Lois Jacob  
Paul & Kathleen Jacobs  
Jim & Ann Jinks  
Nancy & David Johnson  
Jann M. Johnston  
Dr. & Mrs. Robert T. Jones  
The Kane-Mainier Family\*  
Ms. Maureen J. Kanfoush  
Ellen T. Kaplan-Goldstein\*  
Dr. John S. Karduck  
Scarlet R. Karpakis  
Carl Katz  
Ms. Debra Singer King  
Mrs. Patricia Gail Kipin  
Mr. & Mrs. Brian and  
Suzanne Koble  
Patricia Carlson Koehler  
Ms. Anne Kramer

Kudas Industries  
Martin J. Kuhner  
LtCol Leonard LaForgia  
Joan M. Lakoski & Paul Mayercik  
Dr. Diane Beynon Landers &  
Mr. Timothy W. Landers  
Chuck & Jeannine Lanigan  
Mr. & Mrs. Earl M. Latterman  
Anna Lawrence  
Dr. Yvette E. Lawson  
Mr. & Mrs. Jeffery L. Leininger  
Patricia Spear Lemer  
Mr. & Mrs. Barry Lhormer  
Lois & Irv Liberman\*\*  
Mr. & Mrs. Kurt L. Limbach  
Dr. Anna Lokshin  
Mr. & Mrs. David Longhini\*  
Dr. & Mrs. Todd Luckasevic  
Ms. Annette Lutz  
Henrietta Major  
Dow & Robert Malnati  
Mr. & Mrs. William G. Malter  
Richard Maravalli  
Richard Margerum &  
Suzanne Broughton  
Barbara Marin  
Dane Marshall  
Mrs. Tafari Marshall  
Michael & Michelle Mathias\*  
Amy Maxin\*\*  
Ms. E. Carol Maxwell\*  
Mr. & Mrs. John H. McDowell  
Judy McNally  
Suzanne C. McNally  
Dr. David & Dr. Gretchen Medich  
Ray & Sue Melcher\*  
Terra Merkey\*  
Lena & Fred Miller\*\*  
Melvin & Jean Ann Miller  
Mr. & Mrs. Robert C. Milsom  
Ella M. Minter  
Mr. Ralph Minto, Jr.\*  
Mr. & Mrs. Charles H. Moellenberg  
Jeffrey & Diana Morrow  
Luis Motles & Beatrice Salazar  
Melanie & Ryan Murray  
Mr. & Mrs. Harvey C. Nathanson  
Robert & Suzanne Newpher\*  
Enrico & Judy Nicolo  
Mr. & Mrs. Thomas A. Nolfi  
Ms. Joan Nonenbacher Nilson\*  
Prof. Peter Oh\*  
Mr. & Mrs. Jeremy Overbay in  
honor of Kelsey Overbay  
Phyllis Pack  
Mrs. Diana R. Paladino  
Dr. Roseman & Dr. Palevsky  
Mike & Barb Panza\*  
Mr. Mark Paynter  
Mr. Dean G. Pearson\*  
Ms. Christine A. Pegula  
The Pellegrini Family  
Ms. Lois M. Perlik  
Daniel Perlongo & Susan Wheatley  
Estate of Pauline Pickens  
Mrs. Denise A. Ponczak  
Ms. Marilyn & David Posner\*\*  
Ms. Linda R. Potter\*  
Karleen K. Preator  
Mr. & Mrs. Gerald S. Prince  
The Queen of the Rosary Study  
Club in honor of Lois Wholey.  
Mr. & Mrs. George Quesnelle  
Fran Quinlan\*\*

The Mr. John P. & Dr. Brenda L.  
Raphael Family  
Mary Ann & William Raymer in  
memory of Grace Birmingham  
Raynor Environmental Enterprises,  
LLC  
Reid Reading  
William J. Recker  
Ms. Pam Reiger  
Allen Renfro  
Barbara Rentz  
John C. & Mary A. Reynolds  
Martial Robichaud  
Mr. & Mrs. John F. Rock\*\*  
Ms. Celilia E. Rockovich  
Ms. Jayne L. Romero\*  
Mrs. Stefania Romoff  
Mr. & Mrs. Byron W. Rosener III  
Carol & Scott Rotruck  
Heather Rowda\*  
Dr. James R. Sahovey\*\*  
Mrs. Joan M. Saroff\*  
Dorothy & Camille Maravalli  
Mr. & Mrs. Daniel Schetley  
Amy Schilling  
Mr. William F. Schmidt  
Dennis Scurletis  
Maevie Sentner  
Stephen & Christina Shaffer  
Susan Abbey Sherman\*  
Mrs. Marjorie F. Shipe  
Susanne Sieminski  
Debra Simko  
Mr. & Mrs. William J. Simpson  
The Singhi Family  
Margaret F. Sloan  
Elaine Small  
Ms. Carol J. Snyder  
Mrs. Susan A. Sobina  
James Spruill  
Janet & Robert Squires  
Joanne M. Starolis  
Ms. Karen Steare  
Jim & Stephanie Stefano  
Mark & Lisa Steliotes in memory  
of Frances M. Valli  
Ms. Cristen A. Stephansky\*\*  
Mr. & Mrs. John W. Stephen  
Mr. & Mrs. Norris Stephens  
Mr. Kenneth R. Stiles  
Donna & John Stolz  
Mr. & Mrs. Clinton Stone  
Ms. Mary Ann Stuart Templeton  
Karen & Don Stump\*\*  
Suzanne & William Switala  
Dr. & Mrs. John W. Tierney  
Becky & Herb Torbin in memory of  
Morris Waldman  
Becky & Herb Torbin in memory of  
Crane Zuvich  
Becky & Herb Torbin in honor of  
Henry Benter  
Colleen & Denny Travis in honor of  
the marriage of Ms. Bonnie  
Walker & Mr. James Tice.  
Bonnie Trucco\*\*  
Mr. & Mrs. Thomas J. Usher  
Albin L. Vareha, Jr.  
Ms. Ruth Wagner\*  
Jana, Andrea, & George Walczak\*  
Dr. Janet Lois Walker\*\*  
Ms. Molly E. Walton  
Mr. Robert T. Wargo  
Drs. Janet & Johnathan Waters  
Jean & Barry Watkinson

Dr. Deborah G. West  
Kathryn Whitacre  
Mr. & Mrs. Raymond B. White  
Terry Wizezorek  
Mrs. Teresa M. Williams  
Elvira J. Wilson  
Georgianna & Charles Wilson  
Christine Woods  
Aubrey Worek  
Dorothy F. Wriedt  
Richard A. Yeager\*\*  
Dave & Donna Yohe in memory  
of Daniel J. Brondos, the loving  
grandfather of Diana Yohe  
Maria & Ivan Yotov  
Jifu Zhou  
Glenda & Walter Ziatek  
  
Platinum Subscriber = \*  
Platinum Subscriber + Annual  
Fund = \*\*

## CORPORATE PARTNERS

**Principal's Association**  
**\$25,000 and up**  
BNY Mellon  
Buchanan Ingersoll & Rooney PC\*  
The Dancer's Pointe\*  
First National Bank  
Giant Eagle  
Highmark Blue Cross Blue Shield  
Macy's  
MSA Safety  
PNC Bank  
UPMC

**Soloist's Association**  
**\$10,000-\$24,999**  
Freud of London  
Jendoco Construction  
Peoples Natural Gas  
Xpatria Investment Advisors

**Corps' Association**  
**\$5,000-9,999**  
Eat' n Park Hospitality Group  
Federal Home Loan Bank of  
Pittsburgh  
Hefren-Tillotson, Inc.  
MedExpress  
PPG Industries, Inc.  
Spang & Company Charitable Trust  
Steptoe & Johnson PLLC  
Wesbanco

**Ballet Master's Club**  
**Under \$5,000**  
Air India\*  
Antiochian Village  
Bank of America  
BPU Investment Management  
George Conte Design Consultants  
Dominion  
ESB Bank  
First Third Bank  
First Commonwealth Bank  
Goldman Sachs- Gina Montana  
Koppers Inc.  
Mascaro Construction Company  
The Midwife Center  
National Fuel Gas Company  
PricewaterhouseCoopers LLP  
Rugby Realty

Zippo Manufacturing Company

## Matching Gift Partners

Dominion  
Goldman Sachs  
IBM Corporation  
BNY Mellon  
PPG  
PNC  
Spectra Energy

## GOVERNMENT FUNDING

Allegheny County  
Allegheny County Economic Development  
Allegheny Regional Asset District  
Commonwealth of Pennsylvania  
National Endowment for the Arts  
Pennsylvania Council on the Arts  
Pennsylvania Department of Community  
and Economic Development &  
the Commonwealth Financing Agency

## THE CAMPAIGN FOR PITTSBURGH BALLET THEATRE

Anonymous (6)  
The Commonwealth of Pennsylvania  
Byham Charitable Foundation  
Richard King Mellon Foundation  
The Heinz Endowments  
Richard E. Rauh

Adams Foundation  
Allegheny County's Community Infrastructure  
& Tourism Fund  
The Benter Foundation  
Gaming & Economic Development Fund  
Eden Hall  
Dawn Christopher Fleischer  
Dr. & Mrs. Freddie H. Fu  
Giant Eagle  
Frances C. James H. Hardie  
Highmark Blue Cross Blue Shield  
Hillman Foundation  
Dona & Tom Hotopp  
PNC Foundation  
Dorrit & David Tuthill

Allegheny Regional Asset District  
Barbara H. Bott & Robert L. Jennings, Jr.  
Jack Buncher Foundation  
Mr. Sean Cassidy  
Colcom Foundation  
Jim & Melanie Crockard  
Ladies Hospital Aid Society of Western PA  
Michael & Jennifer LaRocco  
The Laurel Foundation  
Mary L. McKinney & Mark Flaherty  
Kathleen Miclot  
MSA Safety  
Pitt Ohio  
R. P. Simmons Family Foundation  
Chuck Snyder  
Edith L. Trees Charitable Trust  
Signe & Winthrop Watson

Edwin H. Beachler  
The Chait Family & Sarah Meehan  
Ferrier Family Fund  
Mr. Douglas W. Kreps  
Mark & Christine Popovich  
Lenore & James Schilling  
Shirl S. Unatin

Dr. Geoffrey J. & Grace E. Bond  
W. S. & Beth Brown  
Mrs. Margaret K. Carpenter  
Dan & Betsy Cwenar  
Audrey Hillman Fisher Foundation  
Mr. Michael J. Haver  
Becky Torbin  
Ms. Hilary S. Tyson & Mr. Charles Porter

Bartlett Foundation  
Christine & Brian Beattie  
Debra & Frank Dermody  
Dr. & Mrs. Michael Fallert  
Federal Home Loan Bank of Pittsburgh  
Harris & Janet Ferris  
Mr. & Mrs. Robert A. Gleason, Jr.  
Janet Markel & Barry Lhormer  
Todd & M'Lisa Oravitz  
Susan & Vincent Silvaggio  
August & Jesse Warren  
Markus & Donna Weber  
Lois A. Wholey

Leanne & Paul Adamo  
Tucker Arensberg, P.C.  
Mr. & Mrs. Robert Bracken  
Carole & Keith Briggs  
Broadridge Foundation  
Mr. & Mrs. Mark Brooks  
Ms. Kara Brown  
Aimee DiAndrea & Dave Anoa  
Mary Jane Edwards  
Ms. Julia Erickson & Mr. Aaron Ingley

Celia Fushille  
Donald E. Harper  
Dr. Leslie Hoffman  
Joe & Jennifer Klimchak  
Rose Kutsenkov  
Mr. William & Lisa Luttnner  
John McSorley, MD  
Patricia A. Olean  
Ann Ostergaard  
Cathy & Jay Romano  
Debbra & Michael Schene  
The Senan Family  
Mr. & Mrs. Daniel Stern  
Rachel & Lowell Swarts  
The Tomokiyo Family  
Colleen & Denny Travis  
Corinne & Ross Tucker  
Mr. & Mrs. Robert K. Wagner  
Mrs. Lois M. Wholey  
Roseanne & Dr. Mark H. Wholey  
Joyce & Richard Young

# BOARD OF TRUSTEES

## Board Emeriti Members

James Tomlinson Fort  
Hal Waldman

## Honorary Trustee

Violette Verdy, *deceased*

## Founding Board Chair

Loti Falk Gaffney, *deceased*

### CHAIRMAN



Michael C. LaRocco

### VICE CHAIRMAN



Mark Popovich

### TREASURER



Michael Haver

### SECRETARY



Kathleen Miclot



Michael S. Barnett



Edwin H. Beachler



Christine Beattie



Beth O. Brown



Carolyn M. Byham



Sean Cassidy



The Hon. Jay Costa, Jr.



James E. Crockard III



Debra Dermody



Dawn Fleischner



Freddie H. Fu, M.D.



Jeanne Gleason



James H. Hardie



Paul Hennigan, Ph. D.



Jeffrey Himrod



Dona Hotopp



Donald S. Johnston



Douglas Kreps



Mary McKinney



Peggy McKnight



Sarah Meehan



LeRoy L. Metz II



Sandra Nicholas



Mr. Terrence S. Orr



Richard E. Rauh



Diana Reid



Lisa Saperstein, D.P.M.



Vincent Silvaggio, M.D.



Matt Smith



Shelley Taylor



Becky Torbin



Janet Trapuzzano



David F. Tuthill



Hilary S. Tyson



The Hon. Randy Vulakovich



Jesse Warren



Winthrop Watson



Markus Weber



Eric White



# PITTSBURGH BALLET THEATRE



2900 LIBERTY AVENUE, PITTSBURGH, PA 15201  
PHONE: 412.281.0360 | FAX: 412.281.9901 | PBT.ORG

*Front and Back Cover Photos: Rich Sofranko*