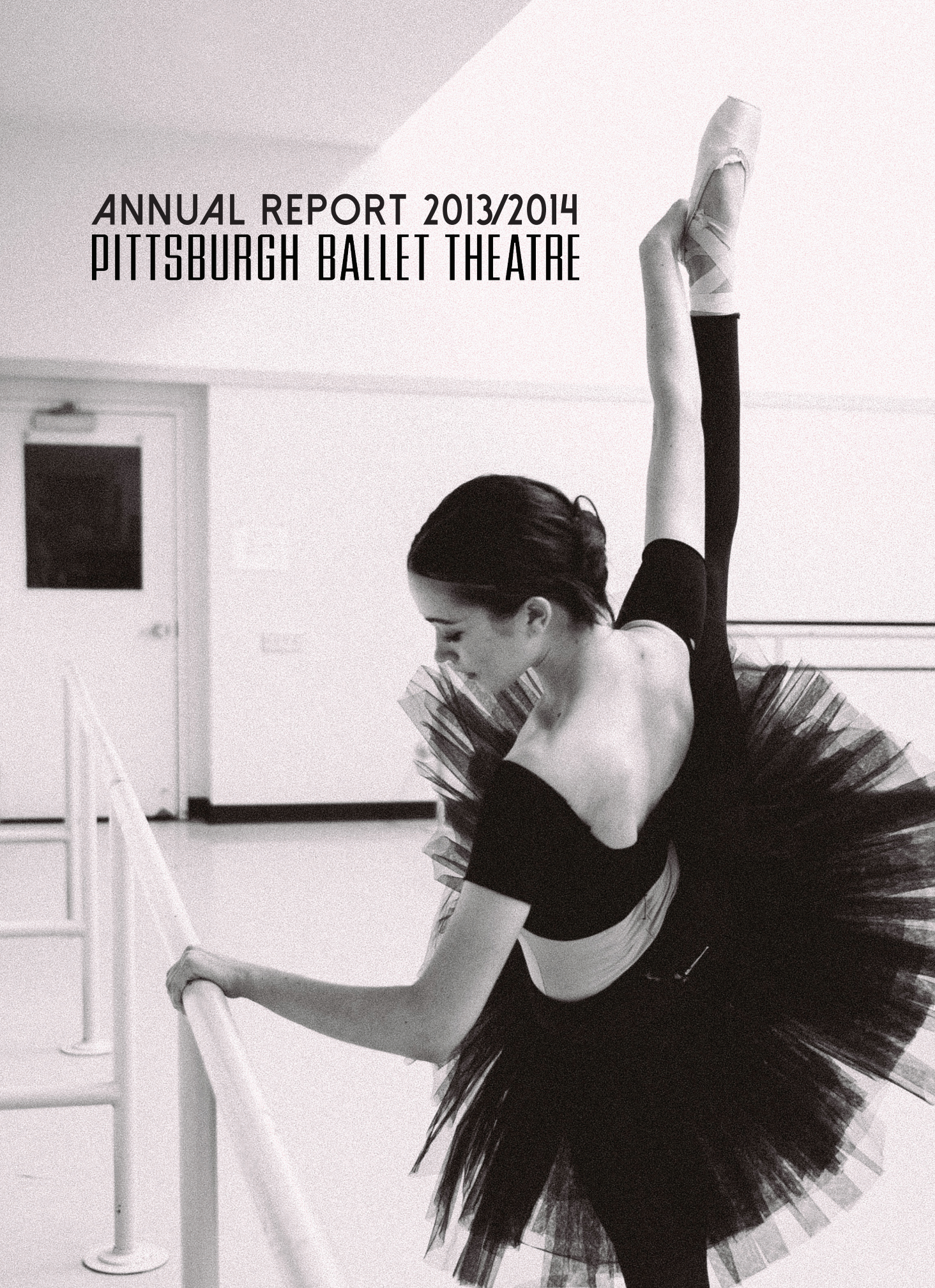


ANNUAL REPORT 2013/2014
PITTSBURGH BALLET THEATRE



*Swan Lake | Artists: Julia
Erickson & Robert Moore
Photo by: Nicholas Coppula*



A PBT TURNING POINT

Beyond our main-stage performances at the Benedum, a walk through Pittsburgh Ballet Theatre Studios during peak performance season illustrates the full scope of our organization.

Here, our students share studio space with our world-class professionals. Our artistic team sets ballets and community members integrate ballet into their fitness routines. Even beyond our building, our teaching artists bring ballet into Pittsburgh Public Schools and neighborhoods.

In every corner of our studios, and in every facet of our organization, the PBT mission is in motion. With your support, this past season has done much to empower our artists and engage our audiences. Our 2013-2014 Season strengthened our new Children's Scholarship Program, advanced the PBT Campus Expansion Plan and piloted the first professional sensory-friendly performance of *The Nutcracker* in the country.

As we approach 50 years in Pittsburgh, our studios symbolize a new era of artistic potential. Momentum continues to build on our Campus Expansion Project, which we consider the keystone to forging a strong future in Pittsburgh and maximizing our impact in the community. We thank you for standing behind our artists, and hope you will join us in this exciting turning point for Pittsburgh Ballet Theatre.

Sincerely,



Harris N. Ferris
HARRIS N. FERRIS
EXECUTIVE DIRECTOR



Terrence S. Orr
TERRENCE S. ORR
ARTISTIC DIRECTOR



James E. Crockard III
JAMES E. CROCKARD III
BOARD CHAIR

THE COMPANY

6 COUNTRIES
REPRESENTED

29 FULL-TIME
COMPANY
DANCERS

46 PERFORMANCES

PRINCIPALS



Nurlan
Abougaliev

Christopher
Budzynski

Julia
Erickson

Alexandra
Kochis

Christine
Schwaner

SOLOISTS



Amanda
Cochrane

Elysa
Hotchkiss

Robert
Moore

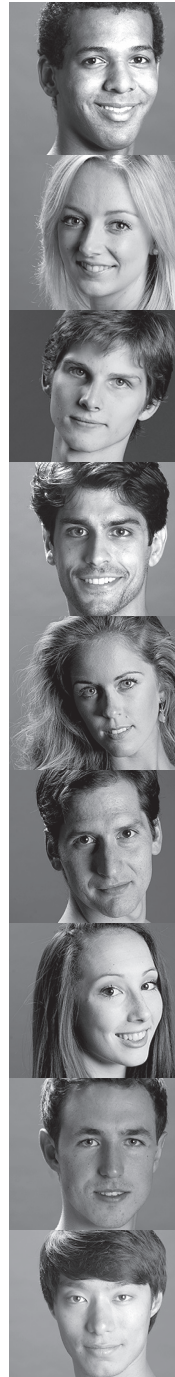
Yoshiaki
Nakano

Luca
Sbrizzi

Alexandre
Silva

Eva
Trapp

CORPS DE BALLET



Corey
Bourbonniere

Hannah
Carter

Nicholas
Coppula

Alejandro
Diaz

Danielle
Downey

Stephen
Hadala

Olivia
Kelly

William
Moore

Ruslan
Mukhambetkaliyev



Joseph
Parr

Caitlin
Peabody

JoAnna
Schmidt

Casey
Taylor

Gabrielle
Thurlow

Cooper
Verona

Molly
Wright

Diana
Yohe

2013-2014 SEASON



Artists: Elysa Hotchkiss & Nurlan Abougaliev
Photo by: Rich Sofranko

AN EVENING OF TWYLA THARP

Attendance: 4,220

"The ballet's dancers were precise, evocative and unflagging in their energy. It was a tour de force for them, as the choreography is for Tharp."

– Pittsburgh Tribune-Review

"...This Tharpian tribute was significant for a series of firsts — the way the dancers filled the vast Benedum stage, even in the duets, and the way they filled the dance."

– Pittsburgh Post-Gazette

Wow. Thank you, @PghBallet for an inspiring, electrifying, heartfelt afternoon of Twyla, Sinatra and Philip Glass. #thankful.



Artist: Yoshiaki Nakano | Photo by: Rich Sofranko

THE NUTCRACKER

Attendance: 34,311 (▲8%)

"Beautiful individual and ensemble dancing, and the inspired music of Peter Ilyich Tchaikovsky...the many elements that make 'The Nutcracker' an enchanting joy were on full display."

– Pittsburgh Tribune-Review

"Spurred on by an enthusiastic audience, the opening night cast took chances with the now familiar choreography, elevating it to a new level..."

– Pittsburgh Post-Gazette

@PghBallet the depth of beauty of the #Nutcracker is a wonder. Thank you.



4,528

FIRST-TIME
TICKET BUYERS

4,573

TOURING & COMMUNITY
PERFORMANCE PATRONS

8,851

(▲8%)
SUBSCRIBER TICKETS

12,304

EDUCATIONAL PROGRAM
PARTICIPANTS

60,893

PERFORMANCE
TICKETS



Artist: Julia Erickson | Photo by: Rosalie O'Connor

SWAN LAKE

Attendance: 12,358

"Nakano owned the air above the stage floor. His powerful leaps were seemingly effortless... Cochrane responded with her most brilliant dancing of the evening..."

– Pittsburgh Tribune-Review

"(Julia Erickson's) was a thoughtful and exotic interpretation, where she hovered almost behind the music, lingering in her phrasing. She captured the audience from the start, a most glamorous Odette..."

– Pittsburgh Post-Gazette

@PghBallet
thank you for
the beautiful
performance
last night. Swan
Lake has made
my weekend so
magical



Artists: Elysa Hotchkiss & Alejandro Diaz
Photo by: Rich Sofranko

3X3

Julia Adam's Ketubah
Viktor Plotnikov's In Your Eyes
Dwight Rhoden's Smoke 'n Roses

Attendance: 4,298

"Joyous creativity...unending inventiveness of movement...stylistic versatility and true musicality..."

– Pittsburgh Tribune-Review

"The dancers really responded to the idea of improvisation...they filled the choreography to the brim with their individuality."

– Pittsburgh Post-Gazette

@PghBallet
dancers killed
it tonight w/
3 technically
challenging
pieces. Loved the
live vocals w/
@ettacoxpgh



Artist: Amanda Cochrane | Photo by: Rich Sofranko

DON QUIXOTE

Attendance: 5,706

"Considered one of the most popular full-length classical ballets, this work stands out for its virtuosic dancing designed to excite the audience, something easily accomplished Friday at the Benedum Center..."

– Pittsburgh Post-Gazette

@PghBallet
Loving Don
Quixote!
So much fun!
#beautiful
dancing



ARTISTIC ENERGY

From the physicality of Twyla Tharp to the classicism of *Don Quixote*, PBT's 2013-2014 repertory season accentuated the artistic range of the company and entered distinctive new works into the PBT repertory. Pittsburghers voted PBT Best Dance Troupe of 2013 in both *Pittsburgh Magazine* and *Pittsburgh City Paper*, and the Pittsburgh Post-Gazette ranked PBT's *An Evening of Twyla Tharp* among its Top 10 Dance Performances of 2013. The artistic energy translated to box office success as the company recorded 10-year ticketing records for *The Nutcracker* and the highest-performing *Swan Lake* run in company history.

PREMIERE WORKS

In March, PBT's 3x3 mixed repertory program unveiled the world premiere of Viktor Plotnikov's inventive *In Your Eyes* and the Pittsburgh premiere of Julia Adam's *Ketubah*, a hybrid of ballet and Israeli folk dance depicting Jewish wedding customs. PBT's Education team expanded on the cross-cultural connections of *Ketubah* – named for the traditional Jewish marriage contract – through an OSHER evening lecture at Carnegie Mellon University, a series of panel discussions and a display of hand-crafted Ketubahs at local community centers.

Ketubah Honor Roll

Eva Tansky Blum
The Jack Buncher Foundation
Gerald & Barbara Chait
Alan & Susan Citron
The Fine Foundation
Giant Eagle Foundation
Marshall & Wallis Katz
Carl & Elaine Krasik
Magee-Women's Hospital of UPMC
Peter & Wendy Mars
Peggy & Steve McKnight
Barbara T. Miller
Jane & Edward Moravitz
The Charles M. Morris Charitable Trust
Ruth Westerman & Jay Robert Myers
Charles & Judy Perlow
William & Nancy Rackoff
The Donald & Sylvia Robinson Family Foundation
James & Louisa Rudolph
Rugby Realty Co., Inc.
Alan & Patricia Siger
Shelley & James Taylor
Herb & Elva Torbin
Dorrit & David Tuthill
Hal & Diane Waldman
Robert L. Wholey

Ketubah | Artists: Alexandra Kochis & Robert Moore | Photo by: Rick Sofranko



NATIONALLY RANKED TALENT

Admired by audiences for his virtuosic technique, newly promoted Principal Yoshiaki Nakano earned a spot on Dance Magazine's national "25 to Watch" ranking of rising dance talent. Joining fellow Principal Amanda Cochrane, Nakano is the second PBT dancer to make the list in two consecutive years.

Artist: Yoshiaki Nakano | Photo by: Duane Rieder

GRACE & GRIDIRON

During the pre-season, PBT welcomed ESPN into the studios to film a feature about Pittsburgh Steelers defensive tackle Steve McLendon, who improves his game with ballet-based cross training. The feature, which included cameos by Principal Julia Erickson and Soloist Alejandro Diaz, reached a national audience on ESPN's *Monday Night Countdown* before the Steelers v. Bengals game.



PBT Orchestra under the direction of Maestro Charles Barker | Photo by: Rich Sofranko

"The orchestra charged through Ludwig Minkus' sunny score, one of the most tantalizing in the classical ballet repertoire. Conductor Charles Barker brought out the best in the dancers, changing tempo at the drop of a hat to support various technical challenges. It was a real asset to the performance."

— Jane Vranish,
Pittsburgh Post-Gazette

LIVE MUSIC

Under the baton of Maestro Charles Barker, the Pittsburgh Ballet Theatre Orchestra elevated two full-length classics with an insightful interpretation of Tchaikovsky's *Swan Lake* and a spirited rendering of Ludwig Minkus' *Don Quixote*. In March, PBT brought live music to 3x3 at the August Wilson Center, featuring vocals by Pittsburgh jazz icon Etta Cox for Dwight Rhoden's *Smoke 'n Roses* and a string quartet for Viktor Plotnikov's *In Your Eyes*.

The Pittsburgh Ballet Theatre Orchestra

Conductor & Music Director
Charles Barker

Violin I
Charles Stegeman, Concert Master
Rachel Stegeman, Associate
Concert Master
Larry Yagello
Keiko Rushlander
Joan Zolkowicz
Jennifer Madge
Mary Beth Schotting

Violin II
Raymond Eichenmuller, Principal
Marjorie Steen
Anne Jackovic
Eleanor Cameron
Rochelle Agnew
Juan Jaramillo
Frank Fergusonson

Viola
Jennifer Gerhard, Principal
Louise Farbman
John McCarthy
Justin J. Johnson

Cello
Elisa Kohanski, Principal
Paula Tuttle
Joseph Bishkoff
Paul Critser

Bass
Jeffrey Mangone, Sr., Principal
Andy Kohn
Robert Skavronski

Flute/Piccolo
Beverly Crawford, Principal
Barbara O'Brien
Thomas Godfrey

Oboe/English Horn
Robin Driscoll, Principal
Cynthia Anderson

Clarinet
Mary Beth Malek, Principal
Jack Howell

Bassoon
Linda Morton
Fisher, Principal
Don Hollis

French Horn
David Lintz, Principal
Matthew Litterini
Marie Claude Driscoll
Scott Bohannon

Trumpet
Charles Daval, Principal
Karen Sloneker
David Anderson

Trombone
Peter Howell, Principal
Keith Jackson
Glenn Wayland

Tuba
Phillip Van Ouse, Principal

Timpani
Jack Dilanni, Principal

Percussion
Albert Wrublesky, Principal
Jan Fung

Harp
Nuiko Wadden

Piano
Yoland Collin

Orchestra Manager
Frank Ostrowski



Don Quixote | Retiring dancer Stephen Hadala takes his final bow with his wife and son by his side. Photo by: Aimee DiAndrea

FINAL BOWS

Eight-year Principal Christine Schwaner and 16-year Corps de Ballet dancer Stephen Hadala announced their retirements at the end of the 2013-2014 Season. Described by Dance Magazine as "the ballerina that little girls dream of becoming," Schwaner continues sharing her talents as a PBT School faculty member, while Hadala, who earned a reputation for his masterful character roles, returned to his hometown in Detroit, Michigan, to take leadership of the dance school where he got his start in dancing.

EDUCATION & COMMUNITY ENGAGEMENT

Each season, PBT brings ballet beyond the stage and into the community to build relationships, improve access and give audience members a closer look at the art form. In 2013-2014, PBT connected ballet dancers with children in Pittsburgh Public Schools, Carnegie libraries and community sites, introduced its first sensory-friendly performance and enriched each production with thought-provoking discussions between audience members and artists.



Sensory-Friendly *The Nutcracker* |
Photo by: Shelby Vogel

ACCESSIBILITY ADVANCES

Among PBT's 24 performances of *The Nutcracker*, one performance broke new ground for audience accessibility. On Dec. 27, PBT became the first professional ballet company in the country to present a performance of *The Nutcracker* designed for patrons with sensory sensitivities, autism and other special needs. From relaxed house rules to specially trained staff, PBT worked with Autism Connection of PA and other advocacy organizations to design a supportive theater setting for families to share a Pittsburgh tradition.

"This is a wonderful thing for all of the children and families in the greater Pittsburgh region who deal with autism every day. Many individuals on the autism spectrum love music, but attending a theatrical production is difficult...On behalf of all of the families, I want to thank you!"

– PBT Patron

The Nutcracker Honor Roll

Pitt Ohio
The Edith L. Trees
Charitable Trust
FISA Foundation
Giant Eagle
The Children's Institute

DANCE FOR PARKINSON'S DISEASE

Pittsburgh Ballet Theatre partnered with Parkinson Foundation Western Pennsylvania to launch a specialized class series designed for people with Parkinson's disease to engage in ballet, modern and other dance techniques. In addition to exercise, which is considered essential in managing PD, dance develops flexibility, balance, mind-body coordination and an outlet for artistic expression. Dance for Parkinson's Pittsburgh is modeled after Dance for PD®, a national program for people with PD and their caregivers, family members and friends.

12,304

REACHED THROUGH
EDUCATIONAL & COMMUNITY
ENGAGEMENT PROGRAMS

1,487

PATRONS REACHED THROUGH
THEATER ENRICHMENT PROGRAMS
AND BACKSTAGE TOURS

CHILDREN'S SCHOLARSHIPS



Photo by Duane Rieder

Since enrolling in PBT School last year, ballet has evolved beyond a Saturday extracurricular for eight-year-old Adon Quinerly. In the words of his mother, "it's a part of his life that he feels connected to." Adon is among the 13 inaugural recipients of the Children's Division Scholarship Program established to make PBT School more accessible to students from diverse socioeconomic backgrounds. Since launching the program in June 2013, PBT has hosted 88 children in two community auditions and awarded 21 scholarships to talented students from ages 5 to 8, a pivotal age for developing dancers. With the support of its donors, and leadership from Sandy and Bill Lambert, PBT launched the program to open the doors to more talent and expose children to benefits that translate beyond

"This program opened a door of opportunity for our son at a crucial time... It helps to develop discipline, balance, agility, strength and self-confidence. I wanted Adon to experience that and to experience dance and musicality. He loves it."

- Maximillion Elliott-Quinerly

the studio. Research from Americans for the Arts, for example, illustrates that involvement in the arts correlates with stronger academic performance, higher standardized test scores and greater community service involvement.

Children's Scholarship Honor Roll

Anonymous Donors (2)
Rosalie Bell
Vivian & Bill Benter
Kelly Boyer
Chris Brussalis
Jayme Butcha
Christine Camsuzou
James Creiman &
Ora Weisz
Melanie & Jim Crockard
Brad Dicianno
Virginia & John DiPucci

Janet & Harris Ferris
Dawn & Chris Fleischner
Leslie & Hans Fleischner
Frank A. Ghinassi
Dona & Tom Hotopp
Marge & Leo Kane
Robert Kormos
Sandy & Bill Lambert
Jennifer & Michael
LaRocco
Debra & David Levenson
Monica Lorenz

Caitrina Lorenz
Peter Matheison
Amy & Rick Mercante
Stacy & Jerry McMahan
Kathlen Miclot
Jeffrey Morby
David Motley
Anita Nischal &
Dr. K. Nischal
Alice Pescuric
Peter P. Petracco
Sandra & Bernard Pinsker

Christine & Mark
Popovich
Debra & Manuel Reich
Jennifer & Ryan Retter
Stephanie Sciuillo
Irina & John
Schwendeman
Amy & Sean Sebastian
Pat & Alan Siger
Susan & Peter Smerd
Carol & Chuck Snyder
Jeanine Spinola

Daniele & Daniel Stern
Shelley & Jim Taylor
Becky Torbin
Colleen & Denny Travis
Ann & Jay Vaughn
Nish & Pam Vartanian
Donna & Markus Weber
Stephen Webster
Dr. Mark & Roseanne
Wholey
Elisa Wholey Zachary



LHAS LEGACY

Jill Nolan is a PBT School parent, a Ladies Hospital Aid Society board member and a first-hand observer of PBT School's impact on budding ballet dancers. With the advocacy of Nolan and Development Director Lois Wholey, the Ladies Hospital Aid Society gifted a \$50,000 endowment grant to establish the LHAS Young Children's Scholarship Fund. The fund will provide annual scholarships to five-to-eight-year-olds who would otherwise be unable to afford tuition for PBT School's internationally recognized training program.

PBT Executive Director Harris Ferris and Artistic Director Terrence S. Orr with Jill Nolan, Carol Kamin and Christine McCormick Chopra of The Ladies Hospital Aid Society | Photo by: Kelly Perkovich

2,700

STUDENTS & EDUCATORS REACHED
THROUGH STUDENT MATINEES &
PROFESSIONAL DEVELOPMENT

1,001

PATRONS REACHED
THROUGH ACCESSIBILITY
PROGRAMS

PITTSBURGH BALLET THEATRE SCHOOL

Pittsburgh Ballet Theatre School's next-generation dancers symbolize a strong future for ballet in Pittsburgh. During the 2013-2014 School Year, PBT School increased enrollment by 16 percent, offered 222 main-stage performance roles, instructed 1,000 students across its Children's, Student, Pre-Professional and Adult Open divisions, and drew 250 out-of-state and international students to Pittsburgh. From children learning ballet foundations to dancers pursuing ballet careers, PBT School students benefit from a world-class training program strengthened by daily exposure to PBT's professional company.



STAGE PRESENCE

In May, nearly 200 PBT School students impressed audiences with year-end performances of mixed repertory ranging from student-choreographed works to scenes from the entrancing – and technically demanding – classic *La Bayadère* at PBT School's Spring Performance 2014 and Pre-Professional Showcases.

Students: Marisa Grywalski & Andrew Kaczmarek | Photo by: Rich Sofranko



*Student: Sophie Silnicki
Photo by: Gregory Batardon*

COMPETITIVE EDGE

For five years, Sophie Silnicki, 16, committed to a daily two-hour commute from Fairmont, WV, for full-time training at PBT School. In February, Silnicki's dedication earned her an invitation to join only nine other American females – and top students from 35 countries – to compete in Switzerland's elite Prix de Lausanne ballet competition. Silnicki is the fourth PBT School student in three consecutive years to receive this selective invitation.

40

INTERNATIONAL
STUDENTS

210

OUT-OF-STATE
STUDENTS

1,000

TOTAL
STUDENTS



INTERNATIONAL EXPOSURE

Representing 31 states and five countries, more than 200 students filled the studios for PBT School's five-week Intensive Summer Program 2013. Culminating in a studio showcase, ISP features an immersive dance curriculum instructed by PBT artistic staff and world-renowned guest teachers.

Photo by: Aimee DiAndrea



CREATIVE SYNERGY

Scholarship students Caroline MacDonald, 20, and Jack Hawn, 16, took their partnering to new heights for PBT School's Pittsburgh First Night performance. The duo set an original new work on a group of their peers in the Pre-professional Program. Aptly titled *Dovetail*, the contemporary ballet featured choreography by MacDonald and an original piano score composed and played live by Hawn.

Photo by: Rich Sofranko



REAL-WORLD EXPERIENCE

In June, PBT School jumpstarted 38 students' summer training with the new "Company Experience" workshop, emulating two weeks in the life of a professional dancer. Students learned classical and original choreography from eight company dancers as well as Artistic Director Terrence S. Orr and other artistic team leaders.

Photo by: Kelly Perkovich



PROFESSIONAL PLACEMENT

By the time the curtain rose on PBT School's year-end performances, graduate students Masahiro Haneji, Marisa Grywalski and Michaela King had accepted PBT company contracts, and nearly 20 students total received full-time or apprenticeship positions at professional ballet companies across the country.

Photo by: Aimee DiAndrea

169

STUDENTS AWARDED
SCHOLARSHIPS AND OTHER
FINANCIAL ASSISTANCE

222

MAIN-STAGE
PERFORMANCE ROLES
FOR STUDENTS

SPECIAL EVENTS

40TH ANNIVERSARY MASQUERADE FOR COSTUMIER JANET GROOM CAMPBELL



PBT Costumier Janet Groom Campbell (center) with her husband, David, and mother, Ann Groom | Photo by: Heather Dougherty

SWAN LAKE AUTOGRAPH SIGNING



*PBT Principals Alexandra Kochis & Julia Erickson with guests
Photo by: Melanie Celeste*

AUDREY HILLMAN FISHER WINE GATHERING



William Benter, Alexandra Kochis, Christopher Budzynski | Photo by: Kelsey Russell

45TH ANNIVERSARY SEASON UNVEILING



*Allegheny County Exec. Rich Fitzgerald & artists
Photo by: Kelly Perkovich*

BALLET UNDER THE STARS AT HARTWOOD ACRES



Peggy and Stephen McKnight | Photo by: Kelly Perkovich

EN POINTE CAST PARTY



Committee members Cristin Cecchini, Danielle Savka, Victoria Blackburn, Leigh Bryant, Heather Dougherty, Michael Quatrini, Megan Quatrini | Photo by: Archie Carpenter

2013 DANCE
MAGAZINE AWARDS

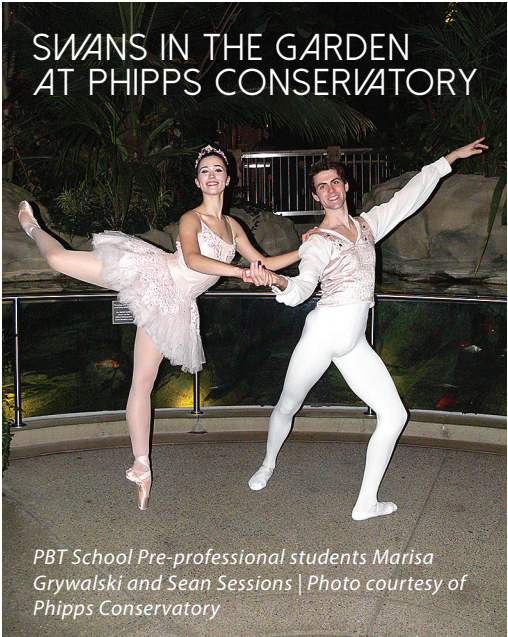


Honoree Patricia Wilde, former PBT Artistic Director, and William Byham
Photo by: Christopher Duggan

POINTE IN TIME BALL:
A SWAN LAKE SOIRÉE



Donna & Markus Weber | Photo by: Jessica Vogelsang Photography



POINTE IN TIME BALL

A SWAN LAKE SOIRÉE



Pointe in Time: A Swan Lake Soirée celebrated the 2013-2014 Season with a white-and-black affair ranked among the Pittsburgh Tribune-Review's Top 10 Events of 2013. Led by a \$50,000 challenge from Pointe in Time Chairs Sandy and Bill Lambert, the gala raised \$100,000 for PBT's Children's Scholarship Program, which provides financial aid at a pivotal stage for aspiring dancers. Following a tableside performance by company dancers, PBT School saluted the program with an encore performance featuring the young talents of the Children's Division.

Honor Roll

Chairpersons

Sandy and Bill Lambert

Committee

David Bush and Timothy McVay

Carolyn and Bill Byham

Melanie and Jim Crockard

Laurie Ann and Ned Foster

Kitty Hillman

Dona and Tom Hotopp

Emily Lambert

Monica Lorenz

Caitrina Lorenz

Kathleen Miclot

Gabriela Porges

Shelley and Jim Taylor

Becky and Herb Torbin

Colleen and Denny Travis

Donna and Markus Weber

Stephen Webster

Sponsors

Premier Sponsor

MSA Safety

Diamond Sponsors

Bill and Vivian Benter

PNC Bank

Emerald Sponsors

Development Dimensions

International

Giant Eagle

Macy's

UPMC Medical and Health

Sciences Foundation

Sapphire Sponsors

Hefren-Tillotson

KPMG

PPG Industries Foundation

Reed Smith

UPMC Department of

Orthopaedic Surgery

Ruby Sponsors

Audrey Hillman Fisher

Foundation

Highmark Blue Cross Blue Shield

UPMC Centers for Rehab Services



From left to right: *Pointe in Time* Chairs Bill and Sandy Lambert; Alexis Macklin, Richard E. Rauh and Kate Colligan; Bill and Vivian Benter; Melanie Crockard
All Photos by: Jessica Vogelsang Photography

400

ARTISTS AND ADVOCATES
GATHERED IN SUPPORT OF
PITTSBURGH BALLET THEATRE

\$438,000

RAISED FOR REPERTORY,
EDUCATIONAL PROGRAMS AND
STUDENT SCHOLARSHIPS

PBT ON TOUR

Each season, Pittsburgh Ballet Theatre brings ballet beyond the Cultural District to connect its world-class artists with communities throughout the tri-state region. During the 2013-2014 Season PBT presented works at performance residencies in Westmoreland County, Pennsylvania; Morgantown, West Virginia; and Hartwood Acres in Hampton Township.



HONOR ROLL FRIENDS OF PBT IN WESTMORELAND

Sean Cassidy and
Gina Sciarrino
Barbara Ferrier
Chuck and Nancy
Anderson
David and Linda Assard
Bill Friedlander
Summer and Duffy
Friedlander
Terence L Graft
Purnel and Libby Jones
Marion and Phyllis Kluska
Dennis and Kathy Rafferty
Scott and Karri Rogers
George Shaner and
Michael Philopena
Yvonne Stack and
David Nelson
Ellen and Bob Piper
Anita Manoli and
Linda Blum
James Bendel
Eric and Hon.
Michelle Bononi
Glenn and Jacquelyn
Cavanaugh
Mr and Mrs Joseph Walton
Mrs. Lois M. Wholey

**Corporate &
Foundation Support**
BPU Investment
Management
Conte Design Consultants
Katherine Mabis McKenna
Foundation
The Community
Foundation of
Westmoreland County
Denham-Vitalie
Old Joe Club
Excelsa Health
Westmoreland County
Community College
Mosaic Wealth
Management
First Commonwealth Bank
The Stereoshop, Inc
The Visionaries of CFWC
Keystone Foam, Inc
Beeghly & Company
Jewelers
Quatrini Rafferty,
Attorneys at Law

MORGANTOWN

Susan S. Brewer
Allison H and
Patrick D Deem
Daryl and Shelly Duncan
Dr. William McCutcheon
Dr. Jennifer Momen
Renee Nicholson and
Matt Bauman
In Honor of Tim Saab
Lisa Salati and
Brad Hillengartner
Annabel Timms

Corporate Support
Mylan Pharmaceuticals
Steptoe & Johnson
WesBanco

CHAUTAUQUA INSTITUTION

Chautauqua, N.Y. - Aug. 21, 2013

Mark Morris' *Drink to Me Only With Thine Eyes*

Dwight Rhoden's *Step Touch*

Antony Tudor's *Jardin Aux Lilas (Lilac Garden)*

BALLET UNDER THE STARS

Hartwood Acres - Aug. 18, 2013

Mark Morris' *Drink to Me Only With Thine Eyes*

Dwight Rhoden's *Step Touch*

Peasant Pas de Deux from *Giselle*

THE PALACE THEATRE

Greensburg, Pa. - March 23, 2014

Twyla Tharp's *Nine Sinatra Songs*

Scenes from *Swan Lake* with the
Westmoreland Symphony Orchestra

WEST VIRGINIA UNIVERSITY CREATIVE ARTS CENTER

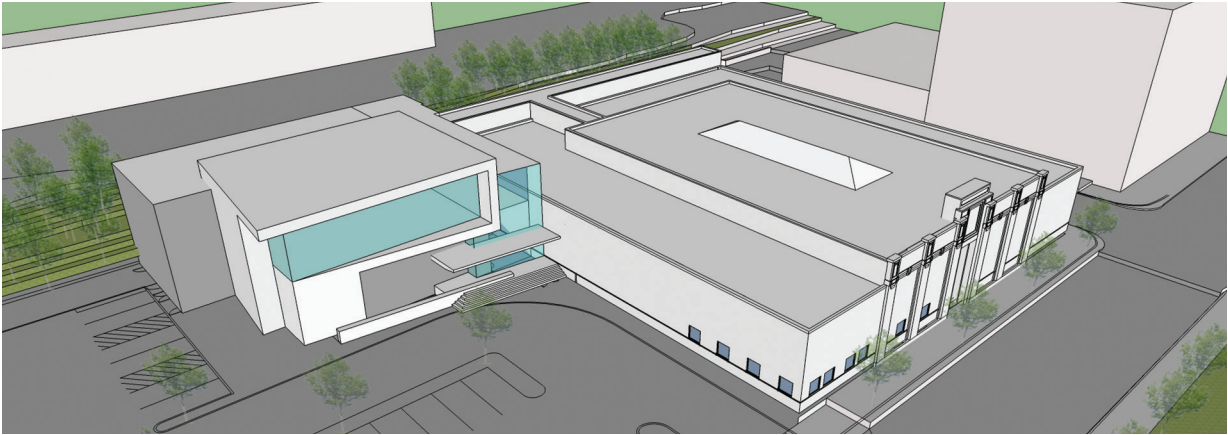
Morgantown, WV - April 27, 2014

Swan Lake with the Pittsburgh Ballet
Theatre Orchestra

Ballet Under the Stars at Hartwood Acres
Photo by: Kelly Perkovich

BUILDING MORE SPACE FOR EXPRESSION

PBT Campus Expansion



PBT is at its most visible at the Benedum Center, where it performs on the third-largest stage in the country. But at its creative headquarters in the Strip District, space is a scarce commodity. Housing five dance studios and the Costume Shop, PBT Studios is where company dancers rehearse, choreographers set ballets and PBT School trains its next-generation dancers. In the past five years, PBT School has recorded enrollment trends that far outpace studio capacity. The space constraint translates to untapped potential in terms of talent, reach and revenue. Since 2009, PBT has invested \$4.1 million in campus expansion projects, including the opening of its first student residency, Byham House, a lobby expansion and a property acquisition. Now, PBT is poised to break ground on the next phase of expansion: a nearly 14,000 square-foot annex building to house additional dance studios and bolster a sustaining revenue source for the entire organization.

DURING THE 2013-2014 SEASON THE PBT CAMPUS EXPANSION PROJECT MARKED THE FOLLOWING MILESTONES:

- ▶ The Commonwealth of Pennsylvania endorsed the cultural value of the project with a \$1 million Economic Growth Initiative grant – one of only 58 awarded statewide – to fund construction.
- ▶ PBT completed its parking expansion with a new paved lot and high-visibility signage along the heavily traveled Liberty Avenue corridor.
- ▶ With an additional \$2 million grant from the McCune Foundation and pledges from individual donors, the building project reached 45 percent of its goal by the end of the fiscal year.

HONOR ROLL

As of June 2014

Anonymous donors (4)
Byham Charitable Foundation
The Commonwealth of Pennsylvania
Richard King Mellon Foundation
Adams Foundation
Allegheny County's Community,
Infrastructure & Tourism Fund
Gaming & Economic Development
Fund
Frances C. & James H. Hardie
The Heinz Endowments
Highmark Blue Cross Blue Shield
Hillman Foundation
Dona & Tom Hotopp
PNC Foundation
Allegheny Regional Asset District
Buncher Family Foundation
Jim & Melanie Crockard
Ladies Hospital Aid Society of
Western PA
The Laurel Foundation
Kathleen Miclot
Pitt Ohio
R. P. Simmons Family Foundation
Signe & Winthrop Watson
Edwin H. Beachler
Dan & Betsy Cwenar
Ferrier Family Fund
Audrey Hillman Fisher Foundation
Dawn & Christopher Fleischner
Dr. & Mrs. Freddie H. Fu
Mr. Michael J. Haver
Michael & Jennifer LaRocco
Mark & Christine Popovich
W. S. & Beth Brown
Dr. & Mrs. Michael Fallert
Federal Home Loan Bank of Pittsburgh
Mr. & Mrs. Robert A. Gleason, Jr.
Joe & Jennifer Klimchak
William & Lisa Luttner
Todd & M'Lisa Oravitz
Mr. & Mrs. Robert K. Wagner
August & Jesse Warren
Roseanne & Dr. Mark H. Wholey
Mr. & Mrs. Mark Brooks
Broadridge Foundation

SUPPORTERS

Community support plays a vital role in fulfilling PBT's artistic vision. Ticket sales, tuition and endowment funding cover just 50 percent of PBT's annual expenses. PBT's financial foundation depends on the support of organizations and individuals who believe that a world-class ballet company belongs in Pittsburgh. PBT is deeply grateful for the generosity of the following contributors.

GOVERNMENT DONORS

Allegheny County
Allegheny Regional Asset District
National Endowment for the Arts
Pennsylvania Council on the Arts

FOUNDATION DONORS

Anonymous
Adams Foundation
Claude Worthington
Benedum Foundation
The Benter Foundation
Broadridge Foundation
Buncher Family Foundation
Calihan Foundation
The Anne L. & George H. Clapp Charitable Trust
The Clarke Family Foundation
Fair Oaks Foundation
The Ferrier Family Legacy Fund
FISA Foundation
The Forbes Fund
Henry C. Frick Educational Fund of The Buhl Foundation
The Grable Foundation
The Heinz Endowments
Elsie H. Hillman Foundation
The Laurel Foundation
McFeely-Rogers Foundation
Richard King Mellon Foundation
Charles M. Morris Charitable Trust
Katherine Mabis McKenna Foundation
Old Joe Club
W.I. Patterson Charitable Fund
The Pittsburgh Foundation
Ryan Memorial Foundation
Myles D. & J. Faye Sampson Family Foundation
James M. and Lucy K. Schoonmaker Foundation
The Shubert Foundation, Inc.
Edith L. Trees Charitable Trust
Community Foundation of Westmoreland County
The Visionaries of Westmoreland County

CORPORATE PARTNERS

PRINCIPAL'S ASSOCIATION \$25,000 AND ABOVE

BNY Mellon Charitable Foundation
Buchanan Ingersoll & Rooney PC*
Cleveland Brothers Equipment Co., Inc.
The Dancer's Pointe*
EQT Foundation
Giant Eagle Foundation

Highmark Blue Cross Blue Shield
Macy's Foundation
People's Natural Gas
PNC Grow Up Great
PNC Foundation
PNC Foundation Matching Gifts Program
Pitt Ohio Express, Inc.
UPMC
Xpyria Investment Advisors

SOLOIST'S ASSOCIATION \$10,000-24,999

Brayman Construction Corporation
Freed of London
Giant Eagle
H. J. Heinz Company Foundation
Jendoco Construction
Meyer, Unkovic & Scott LLP
Mine Safety Appliances Company
PPG Industries, Inc.
Rugby Realty Co., Inc.

CORPS' ASSOCIATION \$5,000-9,999

Bank of America
Bayer USA Foundation
BPU Investments
Dietrich Foundation
Eat'n Park Hospitality Group
EQT Matching Gifts Program
Federal Home Loan Bank of Pittsburgh
Hefren-Tillotson, Inc.
KPMG, LLP
Merrill Lynch
Mylan Pharmaceuticals, Inc.
PPFC Trust Company
PPG Industries, Inc.
Spang & Company Charitable Trust
Steptoe Johnson PLLC
WesBanco Inc.

BALLET MASTER'S CLUB UNDER \$5,000

Abarta Oil & Gas Company
Bar Marco
BNY Mellon Matching Gift Program
BPU Investment Management
The Buncher Company
The Children's Institute
Conte Design Consultants
Denham-Vitalie
Dominion Foundation
ESB Bank
Excelsa Health
First Commonwealth Bank
Federated Investors

Foundation, Inc.
Keystone Foam
Monongalia General Hospital
Mosaic Wealth Consulting
National Fuel Gas Company
PricewaterhouseCoopers LLP
United States Steel Foundation
UPMC Health Plan
UPP Orthopedic Surgery
Westmoreland County Community College
Quatrini Rafferty
Robert Wholey & Co. Inc.
The Stereoshop, Inc.
Zippo Manufacturing Company

INDIVIDUAL DONORS RAISING THE BARRE

PATRONS' CIRCLE

Trustee's Society \$25,000 and above

Anonymous (2)
Vivian & Bill Benter
Mr. Sean Cassidy
Anna R. Greenberg
Sandy & Bill Lambert
Mr. Richard E. Rauh

CHAIRMAN'S SOCIETY \$10,000-24,999

Mr. Edwin H. Beachler, III
Dr. & Mrs. William C. Byham
Ms. Christine Camsuzou
Barbara & Gerald Chait
Dawn and Chris Fleischner
Mr. & Mrs. James H. Hardie
Dona & Tom Hotopp
Mr. & Mrs. David F. Tuthill

DIRECTOR'S SOCIETY \$5,000-9,999

Anonymous
Walter J. Blenko Jr.
Barbara H. Bott & Robert L. Jennings
W. S. & Beth Brown
Ms. Diana Reid
Dr. and Mrs. William F. Coppola
Jim & Melanie Crockard
Dan & Betsy Cwenar
Debra H. Dermody
Mr. and Mrs. Kaye R. Desch
Mary Jane Edwards
Mr. J. Tomlinson Fort
Dr. & Mrs. Freddie H. Fu
Mr. & Mrs. Robert A. Gleason, Jr.
Mr. Michael J. Haver

Donald Johnston
Mr. Douglas W. Kreps
Michael & Jennifer LaRocco
Ted & Mary Lou Magee
Mr. & Mrs. Stephen H. McKnight
Le Roy and Ann Metz
Kathleen Miclot
Jacqueline & Jeffrey Morby
Mr. & Mrs. Terrence S. Orr
Judy & Charles Perlow
Christine & Mark Popovich
Maryann Reabe
Drs. Gregory & Lisa Saperstein
Mr. & Mrs. James E. Schilling
Mr. Jim Sheets
Dr. and Mrs. Vincent Silvaggio
Charlotte M. Stephenson
Shelley and James Taylor
Carol Tillotson
Becky & Herb Torbin
Colleen & Denny Travis
Hilary S. Tyson
Jon and Carol Walton
August & Jesse Warren
Signe and Winthrop Watson
Markus & Donna Weber
Robert Wyche

CHOREOGRAPHER'S SOCIETY \$2,500-4,999

Anonymous (3)
Mr. William P. Anderson
Maxine & William Block
Steffie & Mike Bozic
David L. Buchta & Harmon K. Ziegler
Maureen & Richard Burkland
Jenni & Marty Calihan
Lori L. Cherup, M.D.
Julie, Dale and Carly Clifton
Jamini Vincent Davies
Malindi Davies
Ms. Barbara J. Ferrier
Leslie & Hans Fleischner
Leo & Marge Kane
Robert & Mary Anne Kormos
Ms. Debra C. Piecka
Stephen and Stephanie Plut
Robert & Sharon Scabassi
Mr. Alan H. Shadgett
Lisa Simone and Paul Shea
Mark Steele
Mr. Norman F. Stephen
Mr. and Mrs. Harold H. Stroebel
Robert L. Taylor
Mrs. Shirl S. Unatin
Dr. Mark & Roseanne Wholey
Pride and William Winkenwerder
Beth & Patrick Winkler

*These companies have also made significant in-kind gifts to Pittsburgh Ballet Theatre.

**FRIENDS OF PBT
REPETITEUR'S SOCIETY
\$1,500-2,499**

Anonymous
Mr. Philip M. Bratten
Mr. & Mrs. Joseph L. Calihan
Mr. & Mrs. Fiore W. Coppula
Dr. & Mrs. Adam W. Hahn
Katharine Hillman
Ms. Micki Huff
Dr. Jerome M. Itzkoff &
Dr. Barbara E. Zawadzki
Mr. & Mrs. Paul M. Kochis
Dr. John McSorley
Mrs. Karen Johnese
Mr. & Mrs. E. Kears Pollock
William & Nancy Rackoff
Deborah L. Shearer
Dr. Lori Shutter & Mr. Mike Abney
Mr. and Mrs. Fredrick A. Steward
Mr. & Mrs. Hal K. Waldman
Dr. Michael J. White &
Mr. Richard LeBeau
Mrs. Lois M. Wholey
Matthew Zack & Claire Conaway

**BALLET MASTER'S
SOCIETY \$1,000-1,499**

Anonymous (2)
Ruth Bachman
Richard Baker and Lila Cornell
Mr. and Mrs. Donald G. Block
Eva Tansky Blum
Mrs. Nadine E. Bognar
Thomas and Carolyn Bundy
Dr. & Mrs. John A. Burkholder
David Bush and Timothy McVay
Daniel Edystone
Janet & Harris Ferris
Mary Ann and Edward Graf
Scheryl & Richard Harshman
Mr. John F. Hartnett
The Burton L. and Ruth Hirsch
Memorial Endowment Fund
of the Jewish Federation of
Greater Pittsburgh
Dr. R. Donald Hoffman
Mr. & Mrs. Joseph M. Jackovic
Arthur J. Kerr, Jr.
Joe & Jennifer Klimchak
Susan Mann in honor of
Marjorie Grundvig and
Dennis Marshall
Ms. Mary A. McDonough
Robert & Carol Meeder
Elizabeth Mertz
Todd & M'Lisa Oravitz
Joan & Robert Peirce
Ellen Pucciarelli
Dr. & Mrs. Wilfred T. Rouleau
Louisa & James Rudolph
Pauline Santelli
Amy & Sean Sebastian
Mr. & Mrs. Preston Shimer
Gail Shumway
Mr. Charles Snyder &
Ms. Carol Shriber
Mr. & Mrs. Larry Souleret
Jan & Lowell Steinbrenner
Rachel & Lowell Swarts
Emilie & George Szakach
The Rotary Foundation
Christa Fandel & Paul Trainer
Pamela & Nish Vartanian

Stephen Webster
Ruth Westernman & Jay Myers

**PRINCIPAL'S SOCIETY
\$500-999**

Anonymous (3)
Nancy & Charles Anderson
Mr. & Mrs. Thomas W. Angerman
Dr. Yoshio Arai
Linda & David Assard
Mr. Richard Barney
Ms. Barbara N. Baur
Dr. & Mrs. William A. Belden
Mr. & Mrs. Henry S. Beukema, Sr.
Dr. Clifford Bob & Mrs. Joan Miles
Dr. Lawrence M. Borland
Ellen and J. Judson Brooks in
honor of Stephen Webster
Mr. and Mrs. Marvin A. Brown
Mrs. Margaret K. Carpenter
Judy & Michael Cheteyan
Susan & Alan Citron
Chris & Barbara Cochrane
Cynthia & Bill Cooley
David & Linda Csont
Debra and William Demchak
Virginia & John DiPucci
Shelly & Darryl Duncan
Mary Lou Durr
Ms. Suzanne Flood
Summer & Duffy Friedlander
William Z. Friedlander
Mr. John R. Gorman
T.L. Graft
Ms. Ann S. Grupe
Leslie Hoffman
Daniel Huber
Mrs. Alice Jane Jenkins
Libby & Purnel Jones
Ms. Judy A. Kacsur
Wallis & Marshall Katz
Mr. and Mrs. Thomas C. Kendig
Sydelle Kessler
Phyllis & Marion Kluska
Ms. Peggy C. Knott
Janet Kurtz Seifert
Rose Kutsenkow
Debbie & David Levenson
Mike & Hope McCague
Drs. Jonathan & Kathryn McClure
Stacy & Jerry McMahan
Mr. Paul V. Miller
Betty & Granger Morgan
Susan & James Morris
Darlene & David Motley
Sukanta Nag
Ms. Patricia Kay Nichols
Ms. Renee Nicholson
Mr. and Mrs. Kenneth Nolan
Cathy & Dennis Rafferty
Mr. Richard J. Rizzo
Linda P. Roberts, MD
The Donald & Sylvia Robinson
Family Foundation
Karri & Scott Rogers
Mrs. Frances Kelly
Kathleen Sandoe & Daniel Ready
Donald Saxton in memory of
Barbara May Saxton
Karen Scansaroli
Diana Scott
George Shaner &
Michael Philopena
Dr. Paul Shay &
Dr. Diana K. Lemley
Patricia & Alan Siger
Dennis & Susan Slevin
Drs. Peter & Susan Smerd
James Spencer
Lisa Steagall
Ms. Sara G. Steelman
Mr. Sherwood B. Stephens
Ms. Michelle M. Stepnick
Ms. Maria A. Swanson
Dr. Bernard G. Swegman
Janice Taylor & Patrick Condo
Judith & Steve Thomas
Janie & Harry Thompson
Mr. & Mrs. Paul H. Titus
Mr. John R. Tomayko
Mr. and Mrs. John Traina
Mr. and Mrs. Thomas J. Usher
Amy Vignovic in honor of
Donna Weber
Joan Vondra and Tom Chang
Ms. Carla J. Vrsansky
Mr. & Mrs. Robert K. Wagner
Ms. Ruth Wagner
Irene and John Wall
Mr. W. L. & Dr. Barbara H. Ward
Barbara & Richard Webb
Ellen Mandel & Lawrence Weber
Joel and Nancy Weinstein
Ben and Jonella Williamson

**SOLOIST'S SOCIETY
\$250-499**

Anonymous (3)
James Antoniono
Christine & Brian Beattie
Amy Beeghly
Susan and David Bobes
Mrs. Jan H. Boyer
Susan & William Brewer
Jessica Brickert
Christina & Chris Brussalis
Dr. and Mrs. Lawrence E. Callahan
Richard Cannon
Ms. Sallie W. Carrera
Domenic J. Catton, M.D.
Dr. Richard Chaillet &
Dr. Karen Arndt
Mr. Edward G. Conley, Jr.
Judith & Robert Cunningham
Mrs. Zelda Curtiss
Marion Damick
Mr. Patrick A. Denham
Edward U. Depersis
Timothy J. DeSanto
Mr. Harold Dixler
Mr. & Mrs. Richard E. Dixon
Ms. Jerilyn Donahoe
Mr. Robert S. Douds, Jr.
Deanna Hupp
Mr. & Mrs. Howard L. Engelberg
Mr. and Mrs. Harry O. Finklea
Mr. Austin Flanders
Mrs. Iris R. Flinn
Mr. W. Peter Geissler
Jeanne Gelman
Frank A. Ghinassi
Mrs. Arlyn Gilboa
Ms. Mary Kay Goodwin
Ms. Anne Jane Gray &
Mr. David Carr
Dr. Charles B. &
Dr. Susan I. Greenberg
Ms. Patricia Harris

Robin and Steven Hausman
Dr. Thelma L. Herlich
Mr. and Mrs. Thomas J. Herward
Mr. & Mrs. Henry L. Hillman
Mr. and Mrs. John Hombosky
Roberta Kardell
Ms. Marilyn Koch
Larry P. Leahy, D.M.D.
Patricia LeClere
Ms. Patricia S. Lemer
Mrs. Paula M. Lockhart
Anita & Charles Manoli
William & Mary Markle
Kevin and Kristen McMahon
Ms. Cynthia McNulty
Ms. Mary C. Mehl
Leila Merola & Edward Lasko
Mrs. Edith Anne Metcalf
Ms. Elizabeth M. Meyer
John R. Milam
Dr. and Mrs. James D. Moore
Anita & Ken Nischal
Jo Ellen & Barry Numerick
Ms. Cathy Opsitnick
Mr. Elliott S. Oshry
Betsy Peitz
Janet M. Peters
Mr. and Mrs. Stephen C. Philbrick
Sandra & Bernard Pinsker
Ellen & Robert Piper
David Pohland
Ms. Linda R. Potter
Debbie & Terrance Reese
Marnie Menser Repasky
Mona and Bob Riordan
Ms. Doris K. Robertson
Dr. James R. Sahovey
Lisa Salati & Brad Hillgartner
Mr. and Mrs. Daniel C. Schetley
Mr. & Mrs. Schmidt
The Senan Family
Dr. Ralph T. Shuey and
Rebecca L. Carlin
Dr. and Mrs. Richard Siergiej
Jeannine Spinola
Yvonne Gail Stack
Mr. Daniel Stern
Arthur & Barbara Stewart
Michael Stewart
Ms. Mary Ann Stuart Templeton
Annabel Timms
Kaaren Tintori
Lori Trautwine
Dr. and Mrs. Mordecai Treblow
Ms. Jacqueline Walker
Ms. Barbara S. Waxenfelter
Mr. Raymond J. Wean III
in honor of James A. Taylor
Norman Wien
Frank & Heidimarie Wenzel
Sandra D. Williamson
Ms. Janet L. Yates
Elisa Wholey Zachary
Mrs. Peter J. Zikos

**BARRE SOCIETY
\$100-249**

Anonymous (8)
Dr. Francis Adamson &
Ms. Erin Middleton
Ties and Jorunn Allersma
Mr. & Mrs. Jerome Apt
Mr. & Mrs. Mike Aquilina
Ms. Mary H. Boyle

Ms. Carmelita D. Baker
 Anna and Thomas Balestrieri in
 memory of Robert R. Walsh
 Barbara Barbieri
 Mr. Steven M. Barchanowicz
 Mrs. Joan G. Bartolotta
 Alfred H. Baxter
 Mary and Robert Bedard
 Rosalie Bell
 Ms. Barbara J. Belton
 James Bendel
 Melinda Berdyck in memory of
 Marcia Sutherland
 Mr. Joseph S. Beri
 Dr. and Mrs. Bernardo
 Mr. & Mrs. Kenneth Bertel
 Mr. & Mrs. Daniel Bevevino
 Ms. Bernadette M. Bishop Pirollo
 Stephine Blackwell
 Ms. Carol Faulk Blessel
 Bronwell Berg Bond
 Michele & Eric Bononi
 James and Kathy Bouril
 Nathan Boxx
 Ms. Kelly Boyer
 Robert and Kathleen Boykin
 William M. Bradley
 Gwyneth S. Brautigam
 Jill Briercheck
 Anne & Frederick Broad
 in memory of Tim Evans
 Jean Brown
 Mr. & Mrs. Howard Bruschi
 Jayme Buchta
 Arnold J. Capellman
 Valerie Carpenter
 Ms. Jacquelyn Cavanaugh
 Gil & Diane Celedonia
 Kathy Chabala of
 Hallowed Grounds Coffee
 Sherwood and Joanne Chetlin
 in memory of Vivian Krall
 Susan Ann Chismar
 Mr. and Mrs. Thomas A.
 Christopher
 Mr. & Mrs. S. David Cifruk
 Lisa E. Claypool
 Mr. and Mrs. F. Ramsey Coates
 Dr. Gene Finley &
 Jeanne Cobetto
 Rosemary K. Coffey
 Karen Cole
 Mr. James Colker
 Genevieve D. Cook
 Ms. Veronica N. Corpuz
 Mr. Jay Costa
 Nelson and Carol Craige
 Mr. and Mrs. J. Kent Culley
 Mr. and Mrs. William Daniels
 Mrs. Nancy B. DelPresto
 Joyce A. Derabasse
 Ms. Debra S. DiCianna
 June & Barry Dietrich
 Ms. Irene J. Dinning
 Mr. Thomas J. Dionise
 Ms. Ruth R. Donaldson
 Dr. Robert T. Downs
 Ms. Leslie Oden Dunn
 Dianna T. Dunnington
 John & Angela Durham
 Ms. Laura E. Ellsworth &
 Mr. Bruce Teitelbaum
 Mary Ann Eppinger, M.D.
 Ms. Joyce W. Fako
 Mr. and Mrs. Danforth Fales

Patrick and Lauren Fawcett
 Dr. Patricia D. Fedorka
 Ms. Heidi Fenton
 Julia & David Fleischner
 in honor of Andrew Fleischner
 Susanne Fox
 Lori Framiglio
 Mr. Robert W. Freeburn
 Mark C. Freeman
 Dr. Joseph Furman &
 Dr. Reva Rossman
 Mr. and Mrs. Henry J. Gailliot
 Diana M. Galbraith
 John & Kerry Gallick
 Ms. Judy L. Gates
 Mr. and Mrs. Ronald E. Gebhardt
 Mr. & Mrs. Robert Gentilcore
 David L. Gills
 Mr. & Mrs. Craig A. Gipson
 Betsy and Brian Goetz
 in memory of Robert R. Walsh
 Ellen & Michael Goldstein
 Ms. Kimberly A. Goldstrohm
 Mr. Roy A. Gottus
 Mary Ann Graziano
 Marjorie Greenberger in honor
 of William and Carolyn Byham
 Mrs. Anne R. Gregory
 Joyce Candi Grove
 Ms. Barbara Guger
 Lori & Richard Guttman
 Catherine Hagan Vargo
 Ms. Melody A. Hannegan
 Susan & Wilfred Hansen
 Mr. Charles H. Harff
 Sandra Harkins in honor of
 Ronnie Allyn Kramer
 Ms. Christine A. Hartung
 Gordon Haw
 Kim R. Hawkins
 Dr. & Mrs. Fred P. Heidenreich
 Patricia C. Heinz
 Alan Helgerman &
 Sandra Lapetra
 Ms. Linda Hewitt
 Susan & Matthew Hiser
 Ms. Janice Hixson
 Debra & Jason Honkus
 Mr. & Mrs. J. Thomas Hooten
 L. George Houpt
 Mr. Michael Hunter
 Dr. & Mrs. Charles M. Hyde
 Ms. Judith B. Iszauk
 Mr. and Mrs. Timothy C. Jablon
 Paul & Kathleen Jacobs
 Jim & Ann Jinks
 Nancy & David Johnson
 Jann M. Johnston
 Kevin & Barbara Jones
 Dr. & Mrs. Robert T. Jones
 Ms. Janet A. Kaiser
 Mr. & Mrs. William B. Kania
 Dr. Morton Kaplan
 Dr. John S. Karduck
 Scarlet R. Karpakis
 Mrs. Amy M. Kellman
 Charles & Nancy King
 Ms. Debra Singer King
 Mary Kinsel
 Bethany D. Knicely
 Thomas & Christine Kobus
 Patricia Carlson Koehler
 Mr. & Mrs. Carl Krasik
 Sara Alexandra Douds

Kudas Industries
 Martin J. Kuhner
 Mr. & Mrs. Earl M. Latterman
 Mr. & Mrs. Jeffery L. Leininger
 Mrs. Lois C. Liberman
 Ms. Dorothy T. Lindner
 Dr. & Mrs. Gregory Long
 Dr. Camille J. Maravalli
 Philip H. Marcus
 Richard Margerum and
 Suzanne Broughton
 Barbara Marin
 Wendy & Peter Mars
 Michelle & Michael Mathias
 Mr. & Ms. Peter F. Mathieson
 Mr. & Mrs. E. Macdonald Matter
 Amy Maxin
 Terry & Thomas McDonald
 Mr. & Mrs. John H. McDowell
 Wayne McKinney
 Ms. Janice M. Meade
 Margaret Meals
 Dr. David & Dr. Gretchen Medich
 Sue Ellen & Ray Melcher
 Amy & Rick Mercante
 Melvin and Jean Ann Miller
 Barbara T. Miller
 David, Penney & Opal Miller
 Mr. and Mrs. Robert C. Milsom
 Ella M. Minter
 Mark & Suzanne Morrison
 Jeffrey and Diana Morrow
 Mary Catherine Motchar
 The Mrachko Family
 Kurt, Amy, & Erika Mrazik
 Carol Mueller in honor of
 Lois Wholey
 Mrs. Ellyn R. Mueller
 Ms. Suzanne Murphy
 Mr. & Mrs. Harvey C. Nathanson
 Robert & Suzanne Newpher
 Enrico and Judy Nicolo
 Dr. Andris Niedra
 Mr. and Mrs. Thomas A. Nolfi
 Ms. Patricia A. Olean
 Ms. Ann Ostergaard
 Phyllis Pack
 Armand J. Panson
 Robert & Barbara Park
 Ms. Amy S. Parker
 Mr. Mark Paynter
 Ms. Lois M. Perlik
 Daniel Perlono & Susan Wheatley
 Ms. Alice J. Pescuric
 Karen T. Pessolano
 Randi & Peter Petracco
 Estate of Pauline Pickens
 Drs. Robert and Kathy Piston
 Ms. Judith A. Poe
 Mrs. Denise A. Ponczak
 Ms. Marilyn A. Posner
 Myrna & Gerald Prince
 Ms. Jean B. Purvis
 Patricia & Vince Quatrini
 Mr. & Mrs. George Quesnelle
 Fran Quinlan
 The Mr. John P. &
 Dr. Brenda L. Raphael Family
 Mary Ann and William Raymer
 Ms. Alice W. Regine
 Debra & Manuel Reich
 Colleen & Marc Robertshaw
 Mr. & Mrs. Byron W. Rosener III
 Carol & Scott Rotruck

Dr. Barry Schaitkin & Dr. Sally Carty
 Dr. and Mrs. Marc Schneiderman
 Mrs. Shirley Schreiber
 Ann B. Vaughn
 Ms. Doris J. Schwartz
 Stephanie Sciuillo
 Dennis Scurletis
 The Searle Family
 Maevae Sentner
 Stephen Shaffer
 Mary G. Sherwood
 Mrs. Marjorie F. Shipe
 Mr. Martin J. Silverman
 Mr. & Mrs. William J. Simpson
 Leon and Irene Skolnick
 Margaret F. Sloan
 Mrs. Mary Lou Slovonick
 Ms. Elaine Small
 Denice R. Smith
 Mr. Christian Snavely
 Mr. and Mrs. John Paul Snyder
 Ms. Maryanne Sonick
 Janet & Robert Squires
 Joanne M. Starolis
 Ms. Karen Steare
 Mr. and Mrs. Raymond H. Steeb III
 Dr. Vilja K. Stein
 Mr. & Mrs. Norris Stephens
 Mr. Donald Stone
 Ms. Patricia Stover
 Curtis & Becky Stratman
 Dennis & Stacia Swanson
 Mr. & Mrs. Robert H. Swendsen
 Ms. Michelle Switala
 Suzanne & William Switala
 Dr. & Mrs. Aron E. Szulman
 Ms. Carol T. Tabas
 Dr. Anoo Tamber
 Ms. Rhoda E. Taylor
 Vonnice and Robert Teagarden
 Diane and William Thalman
 Robert W. and Tina S. Thomas
 Dr. and Mrs. John W. Tierney
 Dr. Michael A. and
 Dr. Donna J. Tranovich
 Bonnie Trucco
 Albin L. Vareha, Jr.
 Catherine & Stephen Vargo
 Ms. Judith J. Wagner
 Ms. Janet Walker
 Mrs. Molly E. Walton
 Mr. Robert T. Wargo
 Pamela Weston
 Kathryn Whitacre
 Mr. & Mrs. Raymond B. White
 Mr. Richard Whittier
 Terry Wiezorek
 Mrs. Patricia A. Williams
 Elvira J. Wilson
 Georgianna & Charles Wilson
 Mark & Chris Witman
 Dorothy Wriedt
 Joseph & Ellie Wymard, Esq.
 Dave & Donna Yohe
 Joyce and Richard Young
 Mrs. Nancy Zappala
 Linda A. Ziter

FINANCIAL OVERVIEW

Artistic energy continued to correlate with financial stability as PBT ended its eighth consecutive year with a positive change in unrestricted net assets. With support from a dedicated donor base, the company reached 64 percent in its ambitious debt reduction program while managing to increase audience numbers, commission new repertory and introduce new accessibility initiatives. In addition to strong foundation and corporate support, a \$50,000 match grant from the Laurel Foundation encouraged PBT's individual donor family to comprise 32 percent of contributed revenue, and PBT's *The Nutcracker* franchise continued to grow with a 5.6 percent increase in ticketing revenue and an 8 percent increase in attendees.

STATEMENTS OF CASH FLOWS JUNE 30, 2014

CASH FLOWS FROM OPERATING ACTIVITIES	
Changes in net assets	\$ 2,359,161
Adjustments to reconcile changes in net assets to net cash provided by operating activities:	
Depreciation and amortization	339,878
Bad debts	11,483
Net realized and unrealized gains on investments	(1,137,867)
Contributions and grants restricted for investment in endowment	(130,250)
Changes in assets and liabilities:	
Accounts receivable	(8,644)
Pledges receivable	(1,218,390)
Inventory	1,708
Prepaid expenses	(1,059)
Accounts payable and accrued expenses	(58,077)
Deferred revenue	(22,284)
Net Cash Provided By Operating Activities	135,659
CASH FLOWS FROM INVESTING ACTIVITIES	
Purchase of fixed assets	(546,994)
Proceeds from sale of investments	1,810,191
Purchase of investments	(1,449,983)
Net Cash Used In Investing Activities	(186,786)
CASH FLOWS FROM FINANCING ACTIVITIES	
Line of credit, net	497,000
Proceeds from long-term debt	-
Construction payable	104,114
Payments on long-term debt	(638,656)
Contributions and grants restricted for investment in endowment	130,250
Net Cash Provided By Financing Activities	92,708
Net Increase In Cash And Cash Equivalents	41,581
CASH AND CASH EQUIVALENTS	
Beginning of year	1,188,110
End of year	\$1,229,691
SUPPLEMENTAL DISCLOSURE OF CASH FLOW INFORMATION	
Cash paid during the year for interest	\$ 30,347

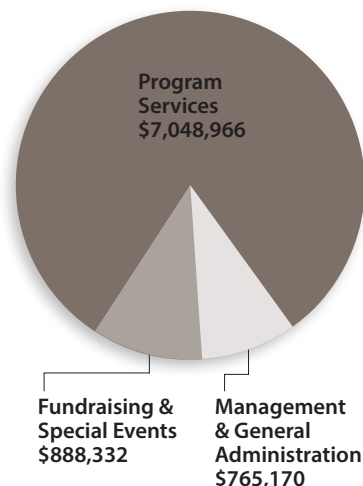
STATEMENT OF FINANCIAL POSITION JUNE 30, 2014

	Unrestricted	Temporarily Restricted	Permanently Restricted	Total
CURRENT ASSETS				
Cash and cash equivalents	—	\$1,103,737	\$62,651	\$1,166,388
Investments	1,285	—	—	1,285
Accounts receivable	35,479	—	—	35,479
Pledges receivable	(174,811)	174,811	—	—
Due (to) from other funds	259,914	815,135	60,000	1,135,049
Inventory	11,269	—	—	11,269
Prepaid expenses	349,808	—	—	349,808
Total Current Assets	482,944	2,093,683	122,651	2,699,278
ENDOWMENT ASSETS				
Cash and cash equivalents	—	—	63,303	63,303
Investments	—	—	8,904,673	8,904,673
	—	—	8,967,976	8,967,976
INVESTMENT HELD BY TRUST				
	—	—	388,793	388,793
PLEDGES RECEIVABLE	—	284,598	660,000	944,598
FIXED ASSETS, NET	2,636,595	1,327,059	—	3,963,654
OTHER ASSETS				
Production assets, net (less accumulated amortization of \$737,584 in 2013 and 2012)	232,817	—	—	232,817
	\$3,352,356	\$3,705,340	\$10,139,420	\$17,197,116
CURRENT LIABILITIES				
Payments due within one year on long-term debt	\$86,952	—	—	\$86,952
Line of credit—construction	127,000	—	—	127,000
Line of credit	370,000	—	—	370,000
Accounts payable and accrued expenses	178,340	—	—	178,340
Construction costs payable	211,714	—	—	211,714
Deferred revenue	1,230,347	—	—	1,230,347
Total Current Liabilities	2,204,353	—	—	2,204,353
LONG-TERM DEBT	311,963	—	—	311,963
NET ASSETS	836,040	\$3,705,340	\$10,139,420	14,680,80
	\$3,352,356	\$3,705,340	\$10,139,420	\$17,197,116

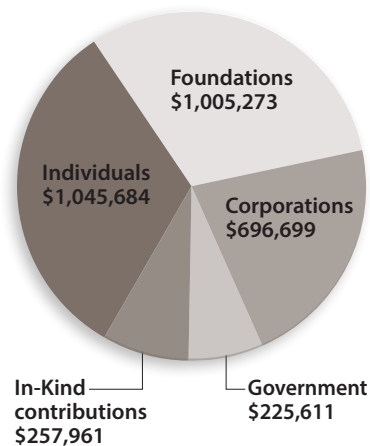
**STATEMENTS OF ACTIVITIES
AND CHANGES IN NET ASSETS
JUNE 30, 2014**

	Unrestricted	Temporarily Restricted	Permanently Restricted	Total
OPERATING REVENUE	\$4,920,369	—	—	\$4,920,369
OPERATING EXPENSES	(8,702,468)	—	—	(8,702,468)
NET REALIZED AND UNREALIZED GAINS INTEREST AND DIVIDENDS	—	—	\$1,258,404	\$1,258,404
Changes In Net Assets Before Public And Private Support, Releases From Restrictions And Depreciation On Leaseholds, Machinery And Equipment And Land Improvements	(3,782,099)	—	1,258,404	(2,523,695)
PUBLIC AND PRIVATE SUPPORT	2,470,857	\$1,862,490	850,250	5,183,597
Changes In Net Assets Before Releases From Restrictions And Depreciation On Leaseholds, Machinery And Equipment And Land Improvements	(1,311,242)	1,862,490	2,108,654	2,659,902
NET ASSETS RELEASED FROM OPERATING RESTRICTIONS				
Investment income spending	571,000	—	(571,000)	—
Other support	760,371	(760,371)	—	—
Total Net Assets Released From Operating Restrictions	1,331,371	(760,371)	(571,000)	—
Changes In Net Assets From Operations	20,129	1,102,119	1,537,654	2,659,902
NET ASSETS RELEASED FROM CAPITAL RESTRICTIONS	129,354	(129,354)	—	—
Depreciation on leaseholds, machinery and equipment and land improvements	(300,741)	—	—	(300,741)
Changes In Net Assets	(151,258)	972,765	1,537,654	2,359,161
NET ASSETS				
Beginning of year	987,298	2,732,575	8,601,766	12,321,639
End of year	\$ 836,040	\$3,705,340	\$10,139,420	\$14,680,800

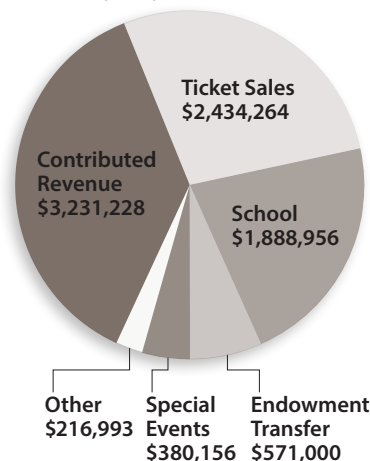
**Use of Operating Funds
Total: \$8,702,468**



**Contributed Operating
Revenues by Source
Total: \$3,231,228**



**Sources of
Operating Revenue
Total: \$8,722,597**



BOARD OF TRUSTEES

CHAIRMAN



James E.
Crockard III

VICE CHAIRMAN



Michael C.
LaRocco

TREASURER



Michael J.
Haver

SECRETARY



Kathleen
Miclot

TRUSTEES



Edwin H.
Beachler



Beth O.
Brown



Holly
Brubach



David Bush



Carolyn M.
Byham



Christine
Camsuzou



Sean
Cassidy



The Hon.
Jay Costa,
Jr.



Susan Cruz



Debra
Dermody



Dawn
Fleischner



James
Tomlinson
Fort



Freddie
H. Fu, M.D.



Jeanne
Gleason



James H.
Hardie



Dona
Hotopp



Donald S.
Johnston



Robert
Kormos, MD



Douglas
Kreps



Demetrios
Mahramas



Peggy
McKnight



Sarah
Meehan



LeRoy L.
Metz II



Terrence
S. Orr



John Pippy



Mark
Popovich



Richard E.
Rauh



Maryann
Reabe



Diana Reid



Lisa
Saperstein,
D.P.M.



Vincent
Silvaggio,
M.D.



The Hon.
Matt Smith



Shelley
Taylor



Becky
Torbin



Colleen
Travis



David F.
Tuthill



Hilary S.
Tyson



Ann Vaughn



The Hon.
Randy
Vulakovich



Jesse
Warren



Winthrop
Watson



Markus
Weber



Pride
Winkenwerder



Bob Wyche

DIRECTOR EMERITUS
Loti Falk Gaffney

HONORARY TRUSTEE
Violette Verdy

STAFF

Artistic Staff

Artistic Director
Terrence S. Orr
Assistant to the Artistic Director
Robert Vickrey
Ballet Mistress
Marianna Tcherkassky
Ballet Master
Steven Annegarn
Music Director and Conductor
Charles Barker
Company Pianist
Yoland Collin

Executive Staff

Executive Director
Harris N. Ferris
Assistant to the Executive Director
Rosemary Sterner

Finance

Director of Operations and Finance
Jay Romano
Accountant/Human Resources Manager
Shelly Swartz
Receptionist/Office Manager
Jamie Adams

Marketing

Director of Marketing and Communications
Aimee DiAndrea
Ticketing Manager
Tanaz Walendziewicz
Group Sales Manager
Daniel Vereb
Design and New Media Manager
Kelly Perkovich
Marketing Coordinator
Meghan McNamara
Customer Care Representatives
Linda Cunko
Debbie Bizak
Lisa Marie Smith

Development

Director of Development
Lois Wholey
Special Events Manager
Shayne Souleret
Development Manager
Aziza El Feil
Manager of Individual Giving
Kelsey Russell
Foundation Relations and Grants Manager
Audra Allen
Corporate Relations Manager
Robert Jessup
Prospect Researcher
Allison Hannon

Arts Education

Director of Education and Community Engagement
Alyssa Herzog Melby
Manager of Audience Education and Archives
Lisa Auel

Production

Production Manager
Joe Lumia
Stage Manager and Assistant Production Manager
Alicia Reece
Assistant Stage Manager
Nik Nemec
Stage Management Intern
Kassondra Glenn
Master Carpenter
Zachary Dwyer
Assistant Carpenter
Ronald Cully
Properties Master
Brad O'Connell
Master Electrician
Kelli Brannigan
Assistant Electrician
Robert Taylor
Wardrobe Supervisor
Kathleen Sullivan
Transportation Manager
Charles Recker

Costume

Costumier
Janet Marie Groom
Costume Assistant
Kathryn DeCaria
Make-up Artist and Hair Dresser
Sherry Deberson
Stitchers
Donna M. Oxley, first hand
Kathleen Sullivan

School

Directors
Dennis Marshall
Marjorie Grundvig
Operations Director
Aaron Rinsema
Principals
Janet Popeleski
Robert Vickrey
Communications Manager
Kylee Hesketh
Operations Manager & Registrar
Rachael Paholich
Administrative Support
Martha Adams
Mike Sweeney
Byham House Staff
Rishala Broughton, House Director
Londen Malloy, Residence Assistant
Flavia Musinsky, Day-Time Supervisor
Matthias Bodnar, Chef
Consulting Psychiatrist
Antoine Douaihy, M.D.
Faculty
Steven Annegarn, PBT Ballet Master
Marianna Tcherkassky, PBT Ballet Mistress
Ann Corrado, Pilates Coordinator
Pollyana Ribeiro, Full-Time Ballet
Andre Reyes, Full-Time Ballet
Kerra Alexander, Boyd Center
Kaila Lewis, Children's Division Coordinator
Emily Aubrey
Cynthia Drayer
Allie Garcia
Hunter Finnegan

Shanna Gayer
Kaila Lewis
Maureen Lucas
Robert Moore
Jamie Murphy
Tamar Rachelle
Michelle Ramos
Shannon Redmond
Renee Smith
Toma Smith
Aleksandr Zankin
Musicians
Yoland Collin, Company Pianist
Ellen Gozion, Full-Time Pianist
Bella Khanis, Full-Time Pianist
Juliet Winovich, Full-Time Pianist
Marc Giosi
Jack Hawn
Michael Kemp
Edward Leonard
Curtis Probel
Qiping Sun
Lisa Wimer

Administration

Information Systems Manager
Joel LaFleur

Building Maintenance

Russell Childs
Frank Lopez

Medical Staff

UPMC Sports Medicine Orthopedic Surgeons
Freddie H.K. Fu, M.D.
Vonda Wright, M.D.
Primary Care Sports Medicine Physician
David A. Stone, M.D.
Foot and Ankle Surgeon
Dane Wukich, MD
Certified Athletic Trainer
Kathleen Nachazel, ATC
Physical Therapists
Erica Coffey, P.T.
Danielle Hildebrand, P.T.
Catherine Vargo, P.T.
Sports Nutritionist
Leslie Bonci, M.P.H., R.D.

Supplementary Medical Staff

Podiatrist
Lisa Watters, D.P.M.
Chiropractor
Jeffrey Cohen, D.C.

Front cover | Artist: Marisa Grywalski
Photo by: Duane Rieder

Back Cover | Photo by: Duane Rieder



PITTSBURGH BALLET THEATRE

2900 Liberty Avenue | Pittsburgh, PA 15201-1500
(p) 412-281-0360 | (f) 412-281-9901 | www.pbt.org