



2012/2013

PITTSBURGH BALLET THEATRE

vision

Pittsburgh Ballet Theatre will be one of America's top ballet companies and schools, and will be a key cultural asset for the Greater Pittsburgh region.

mission

Pittsburgh Ballet Theatre is a community-based and internationally-recognized professional ballet company that performs traditional and contemporary ballets and develops innovative works.

It seeks to perpetuate excellence in the art of ballet through performances, superior training of student dancers and community engagement initiatives.

Cover photo:
Artist: Amanda Cochrane
Photo: Aimee DiAndrea



Artists: Casey Taylor,
JoAnna Schmidt, Kaori
Yanagida, Olivia Kelly
Photo: Aimee DiAndrea

2012-2013 SEASON RAISING THE BARRE

Pittsburgh Ballet Theatre's 43rd Season set the barre high for artistic and organization-wide momentum. PBT grew in all facets – from its audience base and school enrollment to its physical footprint and international profile. The achievements rested on a strong financial foundation as PBT finished its seventh consecutive year realizing a positive change in unrestricted net assets from operations. Pairing classic story ballets with enthralling new repertoire, strong season programming translated to a 30% increase in overall ticket sales, including a ten-year high for *The Nutcracker*.

Each year, Pittsburgh Ballet Theatre reaches more than 70,000 people through main-stage and touring performances, educational programs and training of more than 900 student dancers. At PBT, we measure our success by the range of people we reach with the joy of ballet, and by the supporters that make it possible. From patrons and subscribers to donors and school families, we thank our entire family of supporters who invest in the future of ballet in the Pittsburgh region – as well as the futures of our artists and aspiring dancers.

Sincerely,

Three handwritten signatures in black ink, arranged horizontally. The first signature is on the left, the second in the middle, and the third on the right.



James E. Crockard III
Chairman, PBT
Board of Trustees



Harris N. Ferris
Executive Director



Terrence S. Orr
Artistic Director

IN THE THEATER

6,762

donated tickets

6,960

first-time ticket buyers
(up 43%)

9,622

subscribers
(up 11%)

26,000

people reached
through Educational
Programs (up 12%)

68,718

patrons

ONSTAGE

13

ballets

6

main-stage
productions

40

main-stage
performances

6

touring performances

main-stage productions

GISELLE WITH THE ORCHESTRA

Opening the season with the ethereal masterpiece *Giselle*, PBT dancers learned from the legacy of Ballet Mistress Marianna Tcherkassky and the defining role of her own career at American Ballet Theatre. **Attendance: 4,746**



"It showed that PBT can perform with the best of international companies... A perfect artistic storm... It was real. It was honest. It was a privilege to watch them."

— Pittsburgh Post-Gazette

Artists: Christine Schwaner & Alexandre Silva, Photo: Almee DiAndrea



THE NUTCRACKER

Featuring more than 150 performers, 200 costumes and 20 unique casting combinations, nearly 4,000 people attended the ballet for the first time during *The Nutcracker*.

Attendance: 32,010 (up 30%)

"The most impressive holiday performance in Pittsburgh... With the dancers already at such a high level, this latest 'Nutcracker' edition is like a box of chocolate truffles, with more treats to discover."

— Pittsburgh Post-Gazette

Artists: Julia Erickson & Robert Moore, Photo: Rich Sofranko



Photo: Rich Sofranko

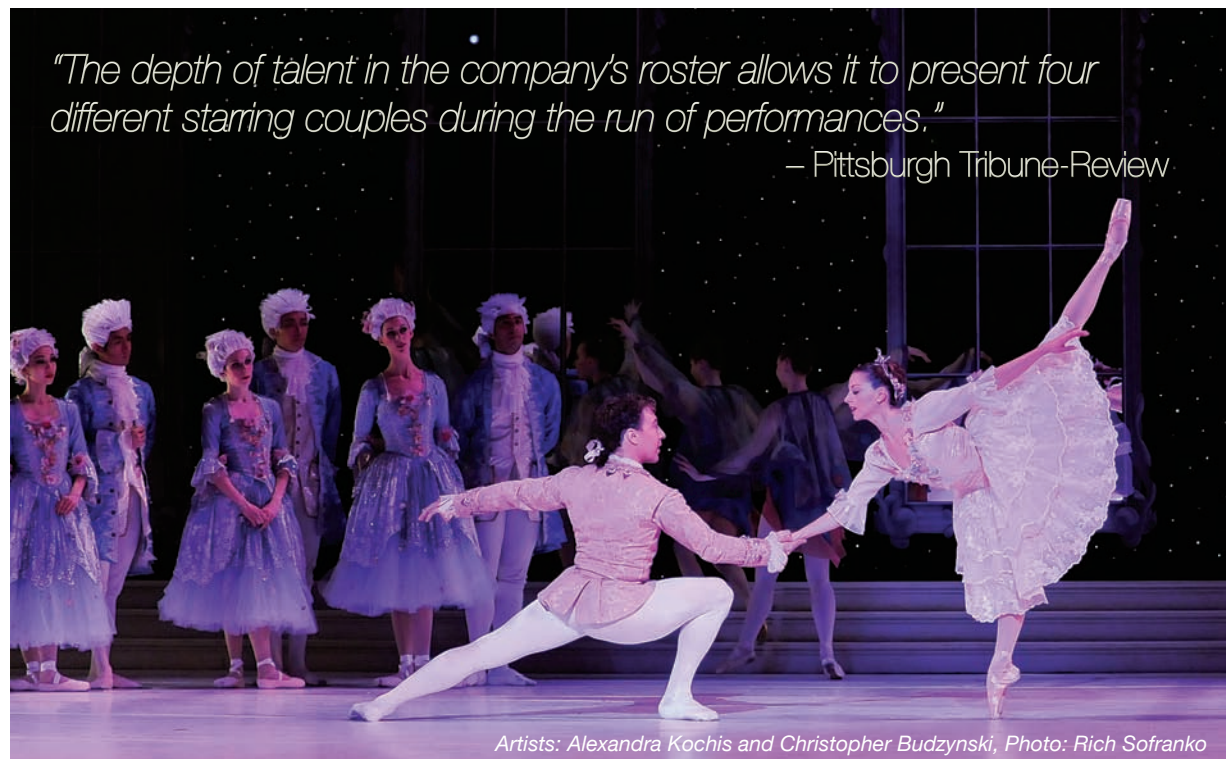
UNSPOKEN

PBT returned to the August Wilson Center for a mixed repertory program featuring Balanchine's breathtaking *Serenade*, Tudor's evocative *Jardin Aux Lilas* (*Lilac Garden*) and Mark Morris' inventive *Drink to Me Only With Thine Eyes*, a new addition to the PBT repertoire.

Attendance: 2,437

"The August Wilson Center program consisted of seminal works by a trio of very different master choreographers ... this was one of the strongest choreographic bills that PBT has ever assembled."

– Pittsburgh Post-Gazette



Artists: Alexandra Kochis and Christopher Budzynski, Photo: Rich Sofranko

CINDERELLA WITH THE ORCHESTRA

Cinderella with the Orchestra was the grand finale to PBT's main-stage season at the Benedum and returned for a sold-out encore performance at Morgantown's Lyell B. Clay Concert Theatre in April. **Attendance: 10,529**

MOULIN ROUGE® – THE BALLET

Due to box office demand, PBT added an extra performance of the Pittsburgh premiere of a new full-length ballet on Valentine's Day weekend. **Attendance: 8,996**

"Eclecticism is a virtue in the ballet 'Moulin Rouge' by Jorden Morris... The story is a dramatically well-constructed love triangle... His choreography evokes strong responses to the principal character and broadens ballet language to include popular styles."

– Pittsburgh Tribune-Review



Artists: Molly Wright & Olivia Kelly, Photo: Aimee DiAndrea

BY THE NUMBERS

27

full-time
company
dancers

1,520

hours of
rehearsal

1,410

pairs of
pointe
shoes

285

hours of company
ballet class

Artist: Gabrielle Thurlow
Photo: Aimee DiAndrea

the company

PRINCIPALS



Nurlan
Abougaliev

Christopher
Budzynski

Julia
Erickson

Alexandra
Kochis

Christine
Schwaner

SOLOISTS



Amanda
Cochrane

Elysa
Hotchkiss

Robert
Moore

Luca
Sbrizzi

Alexandre
Silva

Eva
Trapp

CORPS DE BALLET



Corey
Bourbonniere

Nicholas
Coppola

Alejandro
Diaz

Danielle
Downey

Stephen
Hadala

Olivia
Kelly



Yoshiaki
Nakano

Makoto
Ono

Joseph
Parr

Caitlin
Peabody

JoAnna
Schmidt

Casey
Taylor



Gabrielle
Thurlow

Cooper
Verona

Molly
Wright

Kaori
Yanagida

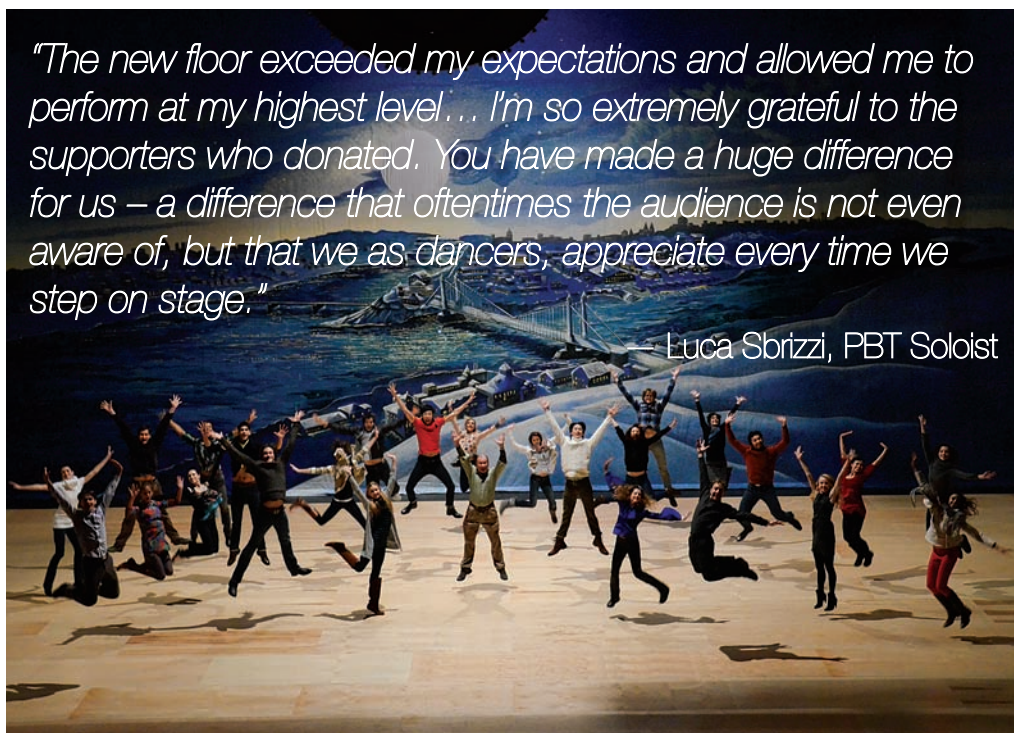
A BUOYANT NEW START AT THE BENEDUM

Thanks to supporters at PBT's Pointe in Time Ball, company dancers literally jump for joy at the installation of a new, state-of-the-art sprung floor at the Benedum Center. The new stage surface protects dancers' joints from the full impact of performing, leading to fewer injuries and longer careers.

PBT company artists with Artistic Director Terrence S. Orr
Photo: Aimee DiAndrea

"The new floor exceeded my expectations and allowed me to perform at my highest level... I'm so extremely grateful to the supporters who donated. You have made a huge difference for us – a difference that oftentimes the audience is not even aware of, but that we as dancers, appreciate every time we step on stage."

— Luca Sbrizzi, PBT Soloist



HONOR ROLL

Bill and Vivian Benter, Peggy and Stephen McKnight, Mary and Jay Cleveland, Shelley and Jim Taylor, Dona and Thomas Hotopp, Gabriela and David Porges

Bill and Kathie Coppola, Melanie and Jim Crockard, Richard and Shelly Hill, Sandy Lambert, Kathleen Miclot, Joe Salpietro, Lisa Simone and Paul Shea, Philip Sweeney, Becky and Herb Torbin, Colleen and Denny Travis, Dorrit and David Tuthill, Donna and Markus Weber

Christine Camsuzou, Tom and Karen Reinsel, John J. Emmerling, Clyde Jones, Bob Kormos, Vonda Wright, Jason and Kelly Altmire, Jeff Brodsky and Nancy Knowles, Diane Falconer, Jeff and Gayle Krein, Eric MacDonald, Deborah Shearer, Daniel Stern, Lewis and Julie Gardner, Natasha Parekh, Rachel Cecil

PBT DANCERS IN THE NATIONAL SPOTLIGHT

AMANDA COCHRANE: 25 TO WATCH

In her first year as a PBT Soloist, Amanda Cochrane earns a spot among *Dance Magazine's* list of 25 Dancers to Watch in 2013.

CAITLIN PEABODY: BEST OF THE CORPS

Dance Magazine distinguishes PBT dancer Caitlin Peabody as one of its 10 Stars of the Corps, chosen from dancers from all over the world.



CHRISTINE SCHWANER: TECHNIQUE MY WAY

Principal dancer Christine Schwaner caught the eye of *Dance Magazine* editors during a studio visit, leading the magazine to highlight her technique and rehearsal routine in its April edition.

EVA TRAPP: DANCER'S CHOICE

PBT soloist Eva Trapp shared her eclectic style and dancewear choices with *Dance Magazine* readers in a full-page *Dancer's Choice* column.





Artist: Julia Erickson,
Photo: Rich Sofranko

LIVE MUSIC UNDERSCORES SUCCESSFUL SEASON

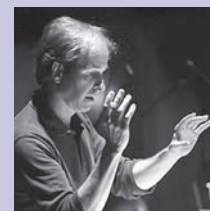
Under the baton of Music Director Charles Barker, the Pittsburgh Ballet Theatre Orchestra achieved rave reviews on par with the dancers for its live accompaniment of PBT's 2012-2013 Season opener, *Giselle*, and its grand finale, *Cinderella*. With a career spanning more than 30 years and some of the most influential companies in the ballet world, Barker leads an extremely accomplished team of musicians here in Pittsburgh. In the 2012-2013 Season, PBT maintained its annual commitment to live music by pairing two main-stage performances with orchestra in addition to live piano accompaniment for *Drink to Me Only With Thine Eyes* at the August Wilson Center.

PBT gratefully acknowledges the support of an Anonymous Individual Donor for generously underwriting orchestra accompaniment of *Giselle*.

"Music director Charles Barker led the ballet orchestra in an extremely impressive performance. His energy, sense of style and expressive nuance were the best possible support for the dancers... The ensemble's quality has risen rapidly during his tenure, especially in the characterful string playing."

— Pittsburgh Tribune-Review

PITTSBURGH BALLET THEATRE ORCHESTRA



CONDUCTOR

Charles Barker,
music director &
principal conductor

VIOLIN I

Charles Stegeman,
concertmaster
Rachel Stegeman,
associate
concertmaster
Larry Yagello
Keiko Rushlander
Joan Zolkowicz
Jennifer Madge
Mary Beth Schotting

VIOLIN II

Raymond
Eichenmuller,
principal
Juan Jaramillo
Anne Jackovic
Eleanor Cameron
Rochelle Agnew
Frank Ferguson

VIOLA

Jennifer Gerhard,
principal
Louise Farbman
John McCarthy
Justin J. Johnson

CELLO

Elisa Kohanski,
principal
Paula Tuttle
Joseph Bishkoff
Paul Critser

BASS

Jeffrey Mangone, Sr.,
principal
Andrew Kohn
Robert Skavronski

FLUTE

Beverly Crawford,
principal
Barbara O'Brien
Thomas Godfrey

OBOE

Robin Driscoll,
principal
Cynthia Anderson

CLARINET

Mary Beth Malek,
principal
Jack Howell

BASSOON

Linda Morton Fisher,
principal
Don Hollis

FRENCH HORN

David Lintz, principal
Matthew Litterini
Marie Claude Driscoll
Scott Bohannon

TRUMPET

Charles Daval,
principal
Karen Sloneker

TROMBONE

Peter Howell,
principal
Keith Jackson
Glenn Wayland

TUBA

Philip Van Ouse,
principal

TIMPANI

Jack Dilanni,
principal

PERCUSSION

Albert Wrublesky,
principal
Jan Fung

HARP

Nuiko Wadden

PIANO

Yoland Collin

ORCHESTRA PERSONNEL MANAGER

Frank Ostrowski

education & community engagement

SETTING THE BARRE HIGH FOR ACCESSIBILITY



PBT Education Director Alyssa Herzog Melby with Betty Siegel, Director of VSA and Accessibility at the John F. Kennedy Center for the Performing Arts

For making significant accessibility advances during PBT's 2012-2013 Season, The John F. Kennedy Center for the Performing Arts

Leadership Exchange in Arts and Disability (LEAD) honored Alyssa Herzog Melby, PBT's director of education and community engagement, with its 2013 Award for Emerging Leaders. Over the course of a single season, Melby's leadership has placed PBT at the forefront of accessibility initiatives designed for dance audiences.

PBT made huge strides in accessibility services during the 2012-2013 Season by:

- Introducing braille and large-print programs at every performance and audio versions of program notes at www.pbt.org.
- Becoming the first Pittsburgh dance company to design audio description and pre-performance sensory seminars for visually-impaired patrons
- Announcing the premiere of an autism-friendly performance of *The Nutcracker* – the first professional production of its kind in the country – on December 27, 2013

EQT FUNDS STUDENTS' DAY AT THE BALLET

In April, a grant from the EQT Foundation took more than 850 students from Armstrong and Greene counties to the ballet for Pittsburgh Ballet Theatre's season finale, *Cinderella with the Orchestra*. The grant funded youth performance tickets and bus funding to encourage schools in surrounding counties to integrate the ballet into their classroom curriculum.



PBT Board of Trustees Chairman and Senior Vice President of Land and Business Development at EQT James Crockard with students from Dayton Elementary School, Armstrong School District

"I applaud educators and student groups for incorporating the arts into their classroom experience and am certain this performance will inspire discussion and creativity inside and outside the classroom."

— James Crockard, chairman of the PBT Board of Trustees and a graduate of Carmichaels Area High School in Greene County



Photo: Kylee Hesketh

NEW SCHOLARSHIP PROGRAM ESTABLISHED FOR CHILDREN'S DIVISION

A new scholarship program for low-income children will help make the dream of dancing a reality for 13 new students – the program's inaugural Children's Division scholarship recipients for the 2013-2014 School Year. In partnership with PBT School, the Education Department launched the program with a community audition on June 1, for more than 55 children

from ages 5 to 8. As the first dedicated program for Children's Division scholarships, the annual program will support early ballet training for talented young students. The program joins PBT School scholarships for Intensive Summer Program and Pre-Professional students, which provided nearly \$342,000 of tuition assistance to 122 students during the 2012-2013 School Year.

BY THE NUMBERS

PBT's educational outreach extended to more than 25,000 patrons and community members during the 2012-2013 Season. Highlights include:

4,200

students and educators through Creative Movement, Discover Dance, In-Step, Ballet Fundamentals and other programs in schools, libraries and community sites

3,669

students and educators through student matinee performances at the Benedum Center

1,927

audience members through backstage tours at the Benedum

1,600

patrons through pre- and post-performance theater programs and educational salons

700

community members through education programs at Pittsburgh-area universities

200

educators through newly-reinstated professional development programs

pbt on tour



HONOR ROLL

The Charles M. Morris Charitable Trust, Mr. and Mrs. Gerald Chait, The Fine Foundation, Jewish Federation of Greater Pittsburgh, The Pittsburgh Foundation, Ms. Hilary Tyson and Mr. Charles Porter, Mr. Charles Snyder and Ms. Carol Shriber

Giant Eagle Foundation, Mid-Atlantic Arts Foundation, Mr. and Mrs. Daniel Shapira, Mr. and Mrs. Herbert S. Shear, Dr. and Mrs. Freddie H. Fu, Ms. Eva Tansky Blum, Mr. Nachum Golan and Mr. Steve Hough, Mr. and Mrs. Ira H. Gordon, McKnight Realty Partners, Adams Foundation, Mr. and Mrs. Herbert I. Torbin

The Donald & Sylvia Robinson Family Foundation, Mr. and Mrs. Stephen H. McKnight, Mr. and Mrs. Meyer S. Grinberg, AlphaGraphics in the Cultural District, Ms. Sara Braz, Representative and Mrs. Frank Dermody

Mr. and Mrs. Mark H. Loevner, Mr. Frederick Frank, Mr. William Z. Friedlander, Mr. Karl Krieger, Ms. Janet R. Markel, Mr. and Mrs. Edward N. Moravitz, Ann and Malvern Powell, Mrs. Ada Davis, Seymour Farber, Mr. and Mrs. Carl Krasik, Mr. Robert Sendall, Ms. Gwenda L. Thomas

ISRAEL TOUR

In the company's first overseas tour in nearly 20 years, Pittsburgh Ballet Theatre embarked in August 2012 on an eight-day trip to Israel to perform at the 25th Anniversary of the Karmiel Dance Festival, an international event that hosts an average of 300,000 visitors and 5,000 dancers from Israel and abroad. Beyond Pittsburgh's own Israeli Sister City of Karmiel, PBT also performed works by American masters in a second regional destination, Rishon LeZion.

"All the dancers were especially energized to be here, thousands of miles from home, in PBT's first international tour in decades. The audience responded with generous applause and...the end of the show brought many curtain calls. It was a tremendous kick off."

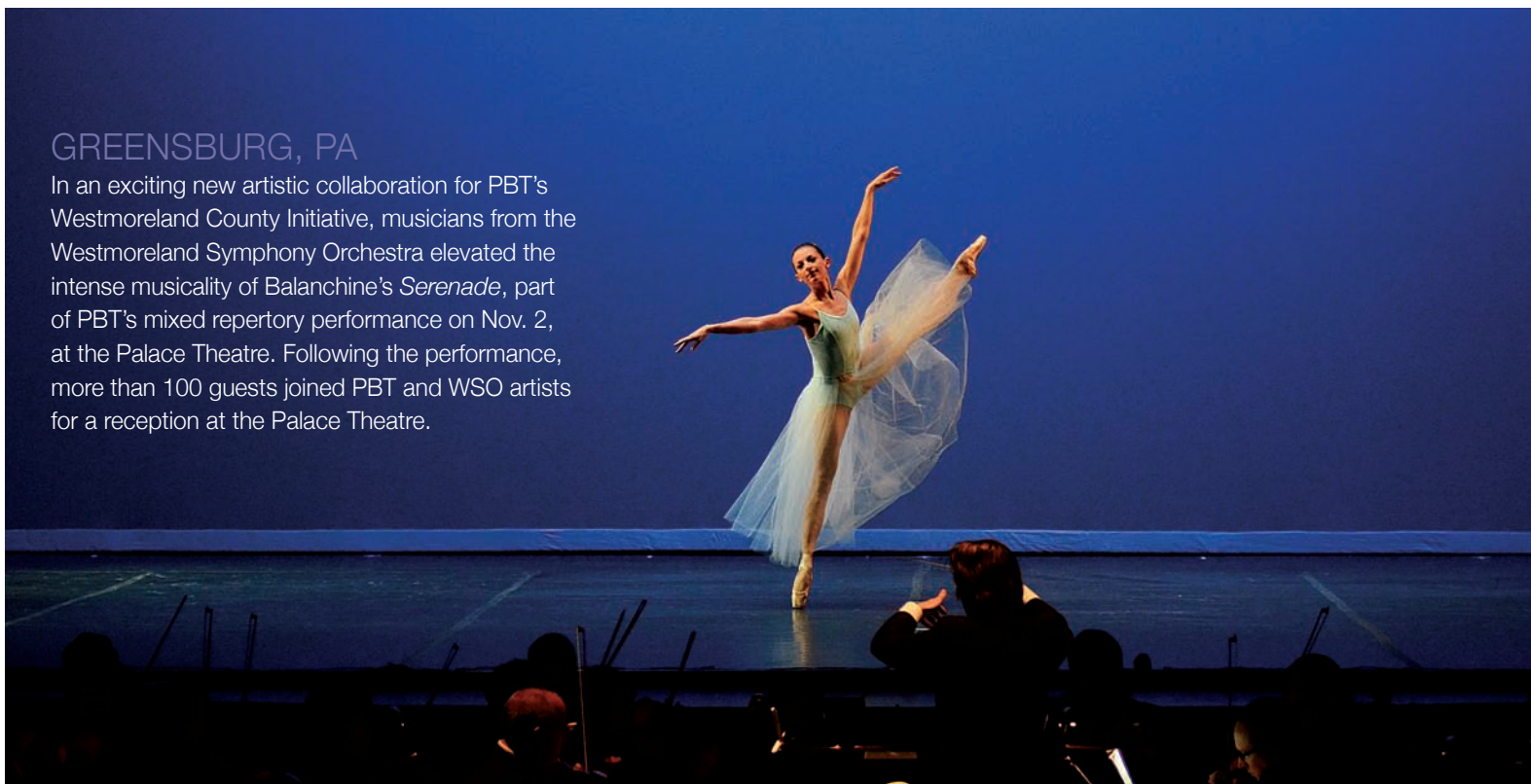
– PBT Principal Dancer Alexandra Kochis

From top: PBT artists Caitlin Peabody, Julia Erickson and Danielle Downey; PBT artists Alexandre Silva and Christine Schwaner and a view of the Old City of Jerusalem; PBT Executive Director Harris Ferris and principal dancers Alexandra Kochis and Christopher Budzynski attended a reception for the Mayor of Karmiel along with Israeli friends affiliated with the Jewish Federation of Greater Pittsburgh— Marcie Lang, Anat Sharvit, and Hana Koval. Photos: Aimee DiAndrea; PBT artists warming up in their Israeli rehearsal studio, Photo: Nicholas Coppola



GREENSBURG, PA

In an exciting new artistic collaboration for PBT's Westmoreland County Initiative, musicians from the Westmoreland Symphony Orchestra elevated the intense musicality of Balanchine's *Serenade*, part of PBT's mixed repertory performance on Nov. 2, at the Palace Theatre. Following the performance, more than 100 guests joined PBT and WSO artists for a reception at the Palace Theatre.



HARTWOOD ACRES

Following a pre-ballet barbecue dinner and free family activities on the lawn, PBT kicked off the 2012-2013 Season with its annual *Ballet Under the Stars* performance, drawing more than 3,000 attendees for a free open air performance sponsored by the County of Allegheny.



MORGANTOWN, WV

PBT presented an encore performance of *Cinderella with the Orchestra* to a sold-out house at Morgantown's Lyell B. Clay Concert Theatre. Due to the generosity of an anonymous donor, the PBT Orchestra made the trip to perform Prokofiev's brilliant score live for Morgantown audiences.



BALLET BEYOND PITTSBURGH

Pittsburgh Ballet Theatre continued to branch out beyond downtown Pittsburgh to extend audiences and build its presence at performance residencies throughout the region.

From top:

Artist: Alexandra Kochis; Westmoreland Symphony Orchestra Music Director Daniel Meyer
Photo: Aimee DiAndrea

Artists: Christine Schwaner & Luca Sbrizzi
Photo: Aimee DiAndrea

Artist: Alexandra Kochis
Photo: Rich Sofranko

events

THE NUTCRACKER HOLIDAY PARTY



Nearly 300 children and family members rang in Nutcracker season with a free, community open house at PBT Studios, featuring ballet-themed crafts, dance lessons, story time sessions and performance excerpts by PBT Pre-Professional students.

BALLET UNDER THE STARS

More than 200 guests joined dancers for a savory summer picnic under the PBT tent before enjoying *Ballet Under the Stars* at Hartwood Acres.



Theresa Owenar & Emma Horowitz with guests

PBT HONORS DR. FREDDIE FU FOR 30 YEARS OF EXCEPTIONAL CARE



PBT Artistic Director Terrence S. Orr, former PBT Principal Erin Halloran, former PBT Artistic Director Patricia Wilde & Dr. Freddie H. Fu

PBT honored Dr. Freddie H. Fu – chairman of the Department of Orthopaedic Surgery at the University of Pittsburgh School of Medicine and UPMC – for his pioneering support of UPMC Sports Medicine's residency at PBT Studios. Although the artistry may appear effortless onstage, PBT dancers are as much athletes as artists, rehearsing and cross training an average of eight hours a day during the season. Comparable to the athletes of the Pittsburgh Steelers and Penguins, PBT's professional dancers benefit from the specialized care of a medical team with an in-depth understanding of the physical demands of dance. Building from personal visits to a full-scale residency, Dr. Fu has committed three decades of continuous care to PBT dancers.



Shelley & Jim Taylor

EN POINTE

PBT's 2012-2013 Season Cast Party hosted 125 people for a celebratory season finale on April 21, at the Peirce Studio.



POINTE IN TIME BALL

Ranked among Pittsburgh's top ten events by the *Post-Gazette* and *Tribune-Review* for the third consecutive year, PBT's 2012 Pointe in Time gala invited guests into a Parisian cabaret for a decadent, five-course French dinner in celebration of *Moulin Rouge® – The Ballet*. Following a tableside performance by PBT dancers, guests danced late into the evening to the music of Gary Racan and the studio-e band. With \$400,000 total raised to benefit repertoire, educational initiatives and PBT School, the evening peaked with a surprise \$50,000 gift from auction supporters to fully fund a state-of-the-art sprung floor for the Benedum Center Stage.

THE COMMITTEE

Chairpersons

Gabriela & David Porges

Committee

David Bush and Timothy McVay, Carolyn and Bill Byham, Melanie and Jim Crockard, Lynn and Ronald Davenport, Jr., Laurie Ann and Ned Foster, Kitty Hillman, Susan Leone, Pam and Ken McCrory, Kathleen Miclot, Christine and Mark Popovich, Sue and Vince Silvaggio, MD, Norma and Michael Sobel, Shelley and Jim Taylor, Becky and Herb Torbin, Colleen and Denny Travis, Stephen Webster

SPONSORS

Premier Sponsor
EQT

Diamond Sponsors

Peoples Natural Gas, PNC, The Adams Foundation

Ruby Sponsor
BNY Mellon

Emerald Sponsors

Giant Eagle Foundation, Macy's

Sapphire Sponsors

Highmark Blue Cross Blue Shield, KPMG, Mine Safety Appliances, Casa D'Oro Diamonds and Fine Jewelry, PPG Industries, Inc., UPMC Centers for Rehab Services, UPMC Department of Orthopaedic Surgery, UPMC Medical & Health Sciences Foundation



From top: PBT artist Caitlin Peabody, Pointe in Time Chairpersons Gabriela & David Porges, Kitty Hillman and Julia Erickson, Lynn and Ron Davenport, Becky and Herb Torbin

MERRILL LYNCH & PBT HOST UNSPOKEN HAPPY HOUR



PBT Trustee Susan Cruz & PBT Development Director Lois Wholey

Merrill Lynch and PBT Trustee Susan Cruz generously sponsored a Young Professionals Salon on Feb. 28, at Olive or Twist to explore PBT's mixed repertoire production *Unspoken*. Nearly 100 young professionals – including many PBT company dancers – mingled while enjoying food, drink and video excerpts from the upcoming ballets.



GREENSBURG POST-PERFORMANCE EVENT

PBT Artistic Director Terrence S. Orr and dancers Eva Trapp and Amanda Cochrane joined Daniel Meyer, artistic director for the Westmoreland Symphony Orchestra, at a post-performance event celebrating *Serenade* at the Palace Theatre in Greensburg.

All photos both pages:
Kelly Perkovich

pittsburgh ballet theatre school

As the official training institution of Pittsburgh Ballet Theatre, PBT School cultivates the next generation of professional dancers, including 50 percent of PBT's current company roster. Under the leadership of Artistic Director Terrence S. Orr and School Directors Marjorie Grundvig and Dennis Marshall, PBT School offers classical ballet training and a diverse dance curriculum to more than 900 students in its Children's, Student, Pre-Professional and Adult Open Divisions. During the 2012-2013 school year, PBT School increased enrollment by 3.5% with continued growth on the horizon as part of the PBT School Expansion Plan, which was created to meet steadily rising enrollment demand. Strengthened by daily exposure to PBT's professional company of dancers, PBT School students experience training that extends from the studio to the main stage.



2012 SPRING PERFORMANCE & PRE-PROFESSIONAL SHOWCASES

PBT School closed the school year by showcasing the talent and diversity of nearly 200 students with its annual Spring Performance and Pre-Professional Showcase.

Photo: Aimee DiAndrea



Artist: Sophie Silnicki, Photo: Vam Productions

SOPHIE SILNICKI ADVANCES TO YOUTH AMERICA GRAND PRIX FINALS

PBT School student Sophie Silnicki, 16, turned in a standout performance at the 2013 Youth America Grand Prix (YAGP) finals in New York City in April. Silnicki was one of only 25 Senior Women (ages 15-19) – and one of six from the United States – to advance to the finals.

INTENSIVE SUMMER PROGRAM 2012

For five weeks in July, PBT Studios transformed into a training ground for 165 aspiring dancers representing five countries and 27 states. For six days a week, students from ages 12 to 22 immersed themselves in PBT School's 2012 Intensive Summer Program taught by PBT faculty and guest teachers of international acclaim.



Photo: Aimee DiAndrea

PRE-PROFESSIONAL STUDENTS REPRESENT PBT AT PROMOTIONAL PERFORMANCES THROUGHOUT PITTSBURGH AREA



PBT School's Pre-Professional students serve as ambassadors for PBT by performing at events throughout the city to raise PBT's visibility. In 2012, PBT School performed at venues and events, including Phipps Conservatory, Children's Hospital, Pittsburgh First Night, PSO Holiday Pops, Pittsburgh Fashion Story and Pittsburgh Fashion Week.

ELENORA MORRIS COMPETES IN PRESTIGIOUS PRIX DE LAUSANNE

At age 17, Pittsburgh Ballet Theatre School student Elenora Morris joined only six females in the United States – and 84 dancers from around the world – to compete in Switzerland's 41st Annual Prix de Lausanne ballet competition, founded in 1973 to discover, promote and support the world's finest young talents. Morris was the third female PBT School student to compete in the prestigious competition in the last two years.



Photo: Aimee DiAndrea



Students: Tara DeSanto and Gabriel Gavrin-Savits,
Photo: Rich Sofranko

MAINSTAGE EXPERIENCE

More than 150 PBT School students in the Children's through Graduate levels performed onstage at the Benedum Center in PBT's *The Nutcracker*, *Cinderella* and other main-stage productions.

PBT SCHOOL ALUMNI RECRUITED INTO COMPANY



Corey Bourbonniere



JoAnna Schmidt



Casey Taylor

In 2012-2013, PBT School alumni JoAnna Schmidt, Casey Taylor, and Corey Bourbonniere completed their first season as PBT company dancers, and the company also signed PBT School Graduate Diana Yohe to the company roster for the 2013-2014 Season. In addition to PBT, 2012 PBT School graduates received employment offers from professional ballet companies, including National Ballet of Canada, Orlando Ballet and Washington Ballet among others.

BY THE NUMBERS

953

students enrolled in Children's, Student, Pre-Professional and Adult Open divisions

180

students joined company dancers on the Benedum stage for *The Nutcracker*

165

students attended PBT School's Intensive Summer Program

35

international students enrolled in PBT School (Brazil, Canada, Guam, Hungary and Japan)

28

states represented by Pre-Professional and ISP students

investing in the future



*Above: PBT School students
outside the Byham House*

Left: Initial conceptual rendering

PBT EXPANDS

The 2012-2013 Season marked major milestones in the Pittsburgh Ballet Theatre School Expansion Project, maintaining the momentum of a vision that is quickly coming to fruition since its inception in 2009. To date, more than \$5 million has been raised for PBT School expansion projects.

2009: PBT opens the Byham House – PBT School's first student residence – which is a valuable tool to draw aspiring students to Pittsburgh. PBT also installs Harlequin sprung floors in all five dance studios.

2012: PBT unveils a renovated lobby to expand accommodations for school families and visitors.

2012: PBT acquires its neighboring property, increasing its campus footprint to more than 60,000 square feet, expanding parking and laying the foundation for a new annex building.

2012: PBT develops a new parking lot, which improves traffic flow and safety by reducing the need for students and families to cross busy Liberty Avenue from PBT's overflow parking lot.

2013: PBT retains an architect for building expansion, and conducts focus groups to envision strategic use of a new annex building.

HONOR ROLL

Anonymous (2), Adams Foundation, Allegheny County's Community, Infrastructure and Tourism Fund, Allegheny Regional Asset District, Byham Charitable Foundation, The Commonwealth of Pennsylvania, Dona and Tom Hotopp, The Heinz Endowments, The Hillman Foundation, Richard King Mellon Foundation

Anonymous, Audrey Hillman Fisher Foundation, Mr. and Mrs. Dan Cwenar, Mr. and Mrs. Jim Crockard, Dawn and Christopher Fleischner, Dr. and Mrs. Freddie Fu, Mr. Michael J. Haver, Frances and Jim Hardie, Mr. Michael LaRocco and Ms. J. Saunders, The Laurel Foundation, Ms. Kathleen Miclot, Mr. and Mrs. Nick Nicholas, Ms. Hilary Tyson and Mr. Charles Porter, Signe and Winthrop Watson

Dr. and Mrs. Michael Fallert, Mr. and Mrs. Joe Klimchak, Wagner Family Charitable Trust

supporters

Community support plays a vital role in fulfilling PBT's vision and supporting the futures of our artists and aspiring dancers. Ticket sales, tuition and endowment funding cover just 50% of PBT's annual expenses. PBT's financial foundation depends on the support of community partners and individuals who share PBT's vision for world-class ballet in Pittsburgh. PBT is deeply grateful for the generous support of the following contributors.

GOVERNMENT FUNDING

Allegheny County
Allegheny Regional Asset District
Pennsylvania Council on the Arts

PRIVATE FOUNDATIONS

Adams Foundation
Anne L. & George H. Clapp Charitable Trust
Benter Foundation
Buncher Family Foundation
Charles M. Morris Charitable Trust
Clarke Family Foundation
Claude Worthington Benedum Foundation
Community Foundation of Westmoreland County
Edith L. Trees Charitable Trust
Elsie H. Hillman Foundation
Fair Oaks Foundation
Fine Foundation
Grable Foundation
Hansen Foundation
Heinz Endowments
Henry C. Frick Educational Fund of The Buhl Foundation
James M. and Lucy K. Schoonmaker Foundation
Meyer & Merle Berger Family Foundation
Mid-Atlantic Arts Foundation
Pittsburgh Foundation
Richard King Mellon Foundation
Ryan Memorial Foundation
Sanford S. & Patricia G. Berman Philanthropic Fund
Sean Cassidy and Gina Sciarrino Charitable Fund
Shubert Foundation, Inc.

PRINCIPAL'S ASSOCIATION

\$25,000 AND OVER
BNY Mellon Charitable Foundation
Cleveland Brothers Equipment Co., Inc.
EQT Foundation
Giant Eagle Foundation
Highmark Blue Cross Blue Shield
Macy's Foundation
Peoples Natural Gas
PNC Foundation

UPMC
Xpyma Investment Advisors

SOLOIST'S ASSOCIATION

\$10,000-\$24,999
Brayman Construction Corporation
Freed of London
H. J. Heinz Company Foundation
Jendoco Construction
Merrill Lynch
Meyer, Unkovic & Scott LLP
Mine Safety Appliances Company
Pitt Ohio
PPG Industries, Inc.

CORPUS' ASSOCIATION

\$5,000-\$9,999
American Eagle Outfitters
Bank of America
Bayer USA Foundation
CONSOL Energy, Inc.
Dietrich Foundation
Eat'n Park Hospitality Group
EQT Matching Gifts Program
Federal Home Loan Bank of Pittsburgh
Federated Investors Foundation, Inc.
Hefren-Tillotson, Inc.
KPMG, LLP
Mylan Pharmaceuticals, Inc.
PFPC Trust Company
PPG Industries, Inc.
Spang & Company Charitable Trust

CHOREOGRAPHER'S ASSOCIATION

\$2,500-\$4,999
First Niagara Bank Foundation
Steptoe Johnson PLLC

BALLET MASTER'S ASSOCIATION

UP TO \$2,499
Abarta Oil & Gas Company
Alphagraphics
BNY Mellon
Dominion Foundation
Ductmate Industries, Inc.
ESB Bank
McKnight Realty Partners
United States Steel Foundation
UPMC Health Plan
UPP Orthopaedic Surgery
Zippo Manufacturing Company

INDIVIDUALS

PATRON'S CIRCLE

TRUSTEE

\$25,000 AND OVER
Anonymous (3)
William and Vivian Benter
Dr. and Mrs. William C. Byham
Dr. and Mrs. Freddie H. Fu
Sandra and Nick Nicholas
Mr. Richard E. Rauh

CHAIRMAN

\$10,000-\$24,999
Barbara H. Bott and Robert L. Jennings
Ms. Christine Camsuzou
Gina and Sean Cassidy
Jim and Melanie Crookard
Mr. and Mrs. Chris Fleischer
Mr. and Mrs. James H. Hardie
Dona and Tom Hotopp
Michael and Jennifer LaRocco
Mr. Charles Snyder and Ms. Carol Shriber
Mr. and Mrs. David F. Tuthill

DIRECTOR

\$5,000-\$9,999
Anonymous
Mr. Edwin H. Beachler, III
Mr. and Mrs. Walter Blenko, Jr.
W. S. and Beth Brown
Ms. Diana Reid
Dr. and Mrs. William F. Coppola
Mrs. Susan Cruz
Dan and Betsy Cwenar
Jamini V. Davies
Debra H. Dermody
Mr. J. Tomlinson Fort
Mr. Michael J. Haver
Robert and Mary Anne Kormos
Douglas and Constance Kreps
Susan A. Leone
Shanon and Demetrios Mahramas
Mr. and Mrs. Stephen H. McKnight
Le Roy and Ann Metz
Kathleen Miclot
Mr. and Mrs. Terrence S. Orr
Mark and Christine Popovich
Maryann Reabe
Drs. Gregory and Lisa Saperstein
Cindy and David Shapira
Vincent J. Silvaggio, M.D.
Dr. and Mrs. Michael N. Sobel
The Donald M. Mateer Foundation
Shelley and James Taylor
Carol Tillotson
Becky and Herb Torbin
Colleen and Denny Travis
Hilary S. Tyson
Signe and Winthrop Watson
Markus and Donna Weber
Rosanna and Robert Wyche

CHOREOGRAPHER

\$2,500-\$4,999
Anonymous
Mr. William P. Anderson
David L. Buchta and Harmon K. Ziegler
Mr. and Mrs. Joseph L. Calihan
Gerald and Barbara Chait
Julie, Dale and Carly Clifton
Ms. Mary Jane Edwards
Mr. and Mrs. Robert A. Gleason, Jr.
Ted and Mary Lou Magee
Ms. Beth W. Newbold
Mr. and Mrs. Douglas A. Papa
Stephen and Stephanie Plut
Kathleen Sarniak
Robert and Sharon Scabassi
Mr. Alan H. Shadgett
The Daniel and Barbara Shapira Philanthropic Fund of the Jewish Federation
Mark and Jocelyn Steele
Mr. and Mrs. Harold H. Stroebel
Ms. Shirl S. Unatin
Mr. and Mrs. Jon D. Walton
August and Jesse Warren
Mrs. Lois M. Wholey
Ms. Lois Wholey
Pride and William Winkenwerder

FRIENDS OF PBT

RÉPÉTITEUR

\$1,500-\$2,499
Anonymous (3)
Michael and Stephanie Bozic
Mr. Philip M. Bratten
Jenni and Marty Calihan
Mr. and Mrs. Fiore W. Coppola
Scheryl and Richard Harshman
Ms. Micki Huff
Leo and Marge Kane
Ms. Debra C. Piecka
Pauline Santelli
Mr. and Mrs. James E. Schilling
Lisa Simone and Paul Shea
Mr. Norman F. Stephen
Mr. and Mrs. Fredrick A. Steward
Robert L. Taylor
Mr. and Mrs. Thomas M. Teti
Mr. and Mrs. Robert K. Wagner
Dr. Michael J. White and Mr. Richard LeBeau

BALLET MASTER

\$1,000-\$1,499
Mrs. James B. Bachman
Mr. and Mrs. Donald G. Block
Thomas and Carolyn Bundy
David Bush and Timothy McVay
Lori L. Cherup, M.D.
Chris and Barbara Cochrane
Mrs. Zelda Curtiss
Mr. and Mrs. Roy G. Dorrance
Ron Erickson
Mrs. Edward L. Graf

Dr. and Mrs. Adam W. Hahn
Mr. John F. Hartnett
Katharine Hillman
Dr. R. Donald Hoffman
Dr. Jerome M. Itzkoff and
Dr. Barbara E. Zawadzki
Mr. and Mrs. Joseph M.
Jackovic
Ms. Karen Block Johnese
Mr. and Mrs. Arthur J. Kerr, Jr.
Mr. and Mrs. Paul M. Kochis
Ms. Betty L. Lamb
Gregory Mauldin and
Michelle Duralia
Ms. Mary A. McDonough
Dr. John McSorley
Robert and Carol Meeder
Ms. Elizabeth R. Mertz
Todd and M'Lisa Oravitz
Ms. Karen Johnese
Joan and Robert Peirce
Dr. and Mrs. Wilfred T. Rouleau
Lisa Salati and Brad Hillgartner
Bill and Mikell Schenck
Deborah L. Shearer
Mr. and Mrs. Preston Shimer
Richard and Virginia Simmons
Mr. Larry Souleret
Erin and Christian Speer
Rachel and Lowell Swarts
The Rotary Foundation
Mr. W. L. and
Dr. Barbara H. Ward
Dr. Mark and Roseanne
Wholey

PRINCIPAL \$500-\$999

Anonymous (3)
Mr. and Mrs. Thomas W.
Angerman
Dr. Yoshio Arai
Mr. Sidney Baker
Richard Baker and Lila Cornell
Mr. Richard Barney
Ms. Barbara N. Baur
Mr. and Mrs. Henry S.
Beukema, Sr.
Mrs. Nadine E. Bognar
Dr. Lawrence M. Borland
Mr. and Mrs. Marvin A. Brown
Dr. and Mrs. John A.
Burkholder
Mr. Edward J. Cain
Cynthia and William Cooley
Cathleen F. Coudriet
David and Linda Csont
Debra and William Demchak
Ms. Deborah G. Dick
Ms. Jerilyn Donahoe
Ms. Suzanne Flood

Mr. and Mrs. Ira H. Gordon
Mr. John R. Gorman
D.T. Gruelle Specialty Logistics
Ms. Ann S. Grupe
Mr. and Mrs. Paul R. Jenkins
Judy and Michael Cheteyan
Ms. Judy A. Kacsur
Mr. and Mrs. Thomas C.
Kendig
The Sydelle and Laibe Kessler
Philanthropic Fund
Joe and Jennifer Klimchak
Ms. Peggy C. Knott
Rachel and Paul Kress
Laurel Holdings
Rev. and Mrs. Thomas C.
Le Clere
Arlene and Jim Leone
Mr. and Mrs. Michael
McCague
Ms. Janet A. McQuaid
Ms. Mary C. Mehl
Universal Hypnosis Unlimited
Mr. Paul V. Miller
Mrs. Cynthia Holden Mock
Ms. Elizabeth N. Morgan
Ms. Patricia Kay Nichols
Mr. and Mrs. Kenneth Nolan
Mr. Elliott S. Oshry
Jeremy and Wendy
Popielarcheck
The Pucciarelli Family
Mr. Richard J. Rizzo
Dr. Linda P. Roberts
The Donald and Sylvia
Robinson Family
Foundation
Kathleen Sandoe and
Daniel H. Ready
Donald and granddaughter
Sophie Saxton
Karen Scansaroli
Dr. Paul Shay and
Dr. Diana K. Lemley
Dr. Gail Shumway

Dennis and Susan Slevin
Bernice and Chauncey Smith
Mr. and Mrs. Lowell
Steinbrenner
Mr. Sherwood B. Stephens
Ms. Michelle M. Stepnick
Ms. Maria A. Swanson
Dr. Bernard G. Swegman
Mr. John R. Tomayko
Drs. Paul and Christa Fandel
Mr. and Mrs. Thomas J. Usher
Joan Vondra and Tom Chang
Ms. Carla J. Vrsansky
Ms. Ruth Wagner
John and Irene Wall
Barbara and Richard Webb
Stephen Webster
Mr. and Mrs. Joel R. Weinstein
Ben and Jonella Williamson
Ms. Alice Wroblewski
Joyce and Richard Young

SOLOIST

\$250-\$499
Anonymous
Phyllis and David Armstrong
Dr. Vitasta Bazaz and Ms.
Sheen Sehgal in memory of
Dr. Kuldeep Sehgal
Dr. and Mrs. William A. Belden
Mr. Joseph S. Beri
Mr. Thomas G. Black
Sharon Bogarad and
Ron Kinney
Courtney and Carl Borntraeger
Ms. Jan Boyer
Dr. and Mrs. Lawrence E.
Callahan
Stellani Coleman
Alan and Lynne Colker
Judith and Robert Cunningham
Marion Damick
Dr. Robert C. and Mrs. Janet Dell
Edward and Valerie DePersis
Mrs. Jacqueline Dixon

Mr. and Mrs. Richard E. Dixon
Mr. Robert S. Douds, Jr.
Ms. Julie M. Duke
Patricia K. Eagon and James
E. Stafford
Ms. Sally E. Evans
Dr. and Mrs. Robert E. Fidoten
Ms. Linda C. Fisher
Mrs. Iris R. Flinn
Drs. R. Kent and Karen Galey
Mrs. Arlyn Gilboa
Dr. Terri F. Gould
Dr. Charles B. and
Dr. Susan I. Greenberg
Dr. Jacob Hanchar
Ms. Patricia Harris
Mrs. Robin G. Hausman
Alan Helgerman and
Sandra Lapietra
David and Elizabeth Henry
in memory of Dr. Timothy
Evans
Mr. and Mrs. Thomas J.
Herward
Mr. and Mrs. Henry L. Hillman
Roberta Kardell
Ms. Marilyn Koch
Larry P. Leahy, D.M.D.
Mrs. Paula M. Lockhart
William and Mary Markle
Sidney McBride
Pamela and Kenneth McCrory
Kevin and Kristen McMahon
Ms. Elizabeth M. Meyer
Dr. and Mrs. John M. Mikulla
Dr. and Mrs. James D. Moore
Miss Julia Grace Mort
Mr. and Mrs. James J. O'Neill
Ms. Cheryl A. Proie
Erin Quinlan
Mona and Bob Riordan
Ms. Doris K. Robertson
Dr. James R. Sahovey
Kim Hawkins
Dr. Ralph T. Shuey and
Rebecca L. Carlin
Ms. Dolores W. Smith-Barber
Barry and Arlene Sokolow
Mr. James Spencer
Ms. Sara G. Steelman
Arthur and Barbara Stewart
Dorrit and David Tuthill in
memory of Lloyd A. Cook
Dorrit and David Tuthill in
memory of Dr. Timothy
Evans
Ms. Barbara S. Waxenfelter
Dr. Phillips I. Wedemeyer and
Mrs. Josephine Wedemeyer
Norman Wein
Frank and Heidmarie Wenzel
Mark A. and Nancy L.
Wittmayer
Ms. Janet L. Yates

BARRE

\$100-\$249
Anonymous (15)
Bill and Sharon Abraham
Paul M. and Leanne S. Adamo
Ms. Debbie O. Allen
Ties and Jorunn Allersma
Dr. Mary Frances Antolini
Mr. and Mrs. Jerome Apt
Mr. and Mrs. Mike Aquilina
Ms. Tammy B. Aupperle
Elissa, Bradley, and Jonathan
Heinbaugh
Mrs. Joan G. Bartolotta
Ms. Mary E. Bedard
Mr. and Mrs. Lee Bellmer
Ms. Barbara J. Belton
Melinda Berdyck in memory of
Marcia Sutherland
Mr. and Mrs. Kenneth Bertel
Mr. and Mrs. Daniel Bevevino
Ms. Carol Faulk Blessel
Ms. Arlene Blissell
Dr. Clifford Bob and
Mrs. Joan Miles
Robert Bonett
James and Kathy Bouril
Gwyneth S. Brautigam
Ms. Susan C. Brody
Jean Brown
Mr. and Mrs. Howard Bruschi
Kristina Buchanan
Ms. Lynn Campbell
Arnold J. Capellman
Valerie Carpenter
Ms. Sallie W. Carrera
Kris and Harry Cartwright
Ms. Jacquelyn Cavanaugh
Stephen Ceurvost
Dr. Richard Chaillet and
Dr. Karen Arndt
Woody and Jo Chetlin
Susan Ann Chismar
Mr. and Mrs. Thomas A.
Christopher
Mr. and Mrs. S. David Cifrutlak
Mr. and Mrs. F. Ramsey Coates
Gene Finley and Jeanne
Cobetto
Rosemary K. Coffey
Ms. Linda Cohen
Mrs. Georgia L. Colangelo
Mr. James Colker
Jean-Pierre Collet
Genevieve D. Cook
Ms. Janet M. Corpora
Ms. Karen Corsano
Hanley Cox
Nelson and Carol Craige
Ms. Wilhelmina Cruise
Mr. and Mrs. J. Kent Culley
John and Debra Curto
Patricia Dalby and Harry Stump

Artists: Christine Schwaner and
Luca Sprizzi, Photo: Rich Sofranko



Rick and Ann-Marie Daubert
 Mr. and Mrs. Lee Davis
 The Dell Family
 Mrs. Nancy B. DelPresto
 Joyce A. Derabasse
 DeVries Fine Art International
 Ms. Irene J. Dinning
 Ms. Katie L. Adams
 Mr. Harold Dixler
 Ms. Ruth R. Donaldson
 Ms. Leslie Oden Dunn
 John and Angela Durham
 Michael and Peggy Dvorznak
 Mr. and Mrs. John F. Ingham
 Mary Ann Eppinger, M.D.
 Jack and Elaine Evanchuck
 Ms. Joyce W. Fako
 Mr. and Mrs. Danforth Fales
 Ms. Heidi Fenton
 Mr. and Mrs. Harry O. Finklea
 Dr. Timothy A. Flood
 David Fraley
 Lori Framiglio
 Mr. and Mrs. Carl B. Frankel
 Mr. Robert W. Freeburn
 Mr. Mark C. Freeman
 Ms. Bonnie L. Funk
 Joseph Furman and
 Reva Rossman
 Diana Galbraith
 John and Kerry Gallick
 Mr. and Mrs. Ronald E.
 Gebhardt
 Mr. and Mrs. Robert Gentilcore
 David L. Gills
 Mr. and Mrs. Craig A. Gipson
 Cindy and Mark Goodman in
 honor of Dr. Freddie Fu
 Ms. Mary Kay Goodwin
 Ludovici Dance Academy
 Ms. Anne Jane Gray and
 Mr. David Carr
 Ms. Marjorie C. Greenberger
 Mrs. Anne R. Gregory
 Peter Alexander Grujich
 Ms. Barbara Guger
 Chris and Ken Gulick
 Ms. Kathleen M. Haefner
 Catherine Hagan Vargo
 Ms. Melody A. Hannegan
 Ms. Sandra Harkins
 Donald E. Harper in memory of
 Carol S. Harper
 Cindy Harris and
 Rebecca Heath
 Ms. Christine A. Hartung
 Gordon Haw
 Kim R. Hawkins
 Bruce Hayden
 Dr. and Mrs. Fred P.
 Heidenreich
 Cynthia L. Herbeck
 Sharon Hicks



Ms. Janice Hixson
 Mr. Chester A. Hobert, Jr.
 Leslie Hoffman
 Tom and Mary Hooten
 Mr. and Mrs. Michael E.
 Hooten
 Charlotte Hott
 L. George Houpt
 Sherry Householder
 Daniel Huber
 Mr. Michael Hunter
 Mr. and Mrs. George L. Illig
 Mr. and Mrs. H. Vaughn Irwin
 Mr. and Mrs. Timothy C.
 Jablon
 Mark and Lynn D. Jablonowski
 Lois Jacob
 Paul and Kathleen Jacobs
 Mr. Jack H. Janes
 Ms. Jean S. Jenkins
 Ms. Jann M. Johnston
 Dr. and Mrs. Robert T. Jones
 Ms. Janet A. Kaiser
 Ms. Anna S. Kalnas
 Christine Kanalis
 Ms. Maureen J. Kanfoush
 Mr. and Mrs. William B. Kania
 Julie Kascal
 Jane Keener
 Charles and Nancy King
 Ms. Debra Singer King
 Ms. Mary Kinsel
 Mrs. Patricia Gail Kipin
 Ms. Elizabeth Anne Knoell
 Ms. Patricia Carlson Koehler
 Kayla and Christina Kozlowski
 Father Gary W. Krummert
 Kudas Industries
 Martin J. Kuhner
 Joan Lakoski
 Ms. Joan F. Lees
 Ms. Patricia S. Lemer
 Mr. and Mrs. Barry Lhormer
 Mrs. Lois C. Liberman

Mrs. Carol Q. Lipchick
 Dr. Scott and Mrs. Susan Long
 Henrietta Major
 Mr. and Mrs. William G. Malter
 Dorothy and Camille Maravalli
 Dr. and Mrs. Matthew
 Marshall, Jr.
 Mr. and Ms. Peter F. Mathieson
 in honor of Shelley Taylor
 Amy Maxin
 Mr. and Mrs. Thomas
 McCaffrey
 Terry and Thomas McDonald
 Mr. and Mrs. John H.
 McDowell
 Ms. Elizabeth McMeekin
 Ms. Janice M. Meade
 Dr. David and
 Dr. Gretchen Medich
 Mr. John R. Milam
 Nancy, James, Evan,
 and Anna Miller
 David, Penney and Opal Miller
 Ms. Becky Mingo
 Ella M. Minteer
 Mrs. Alicia Mrachko
 Kurt and Amy Mrazik
 Deborah S. Muders
 Ms. Ellyn R. Mueller
 Ms. Suzanne Murphy
 Mr. and Mrs. Harvey C.
 Nathanson
 David Nelson
 Ms. Renee Nicholson
 Enrico and Judy Nicolo
 Mr. Andris Niedra
 Jon and Diane Patton
 Ms. Patricia A. Olean
 Mrs. Johanna O'Loughlin
 Mr. and Mrs. J. Irving
 Oppenheim
 Mr. Robert E. Page
 Mr. and Mrs. Alexander Paul
 Mr. Mark Paynter
 Ms. Lois M. Perlik

Ms. Janet M. Peters
 Susan Downs Pettigrew
 Mr. and Mrs. Stephen C.
 Philbrick
 Estate of Pauline Pickens
 Ms. Rebecca Piston
 Ms. Judith A. Poe
 Ms. Marilyn A. Posner
 Laura P. Dieterich
 Ms. Jean B. Purvis
 Meghan Quatrini
 Thomas Quinlan
 Dr. and Mrs. David F. Ranieri
 Mary Ann Raymer in memory
 of Grace Birmingham
 Ms. Pam Reiger
 Barbara and J. Fred Rentz
 Ms. Marnie Mense
 Mr. and Mrs. Robert J.
 Rinefierd
 Christie Robinson
 Mr. and Mrs. John F. Rock
 Mr. Paul A. Rockar
 Mr. and Mrs. Byron W.
 Rosener III
 Ellen A. Roth, Ph.D.
 Marty and Tammy Sanders
 Mrs. Joan M. Saroff
 Thomas and Perri Schelat
 Mr. and Mrs. Daniel C.
 Schetley
 Mrs. Virginia A. Schick
 William Schmidt
 Dr. and Mrs. Marc
 Schneiderman
 Ms. Amy Schuett
 Jamie and Dennis Scurletis
 The Searle Family
 The Senan Family
 Maeve Sentner
 Mr. Stephen P. Shaffer
 Mrs. Susan Sherman
 Mrs. Marjorie F. Shipe
 Mr. Martin J. Silverman
 Mr. and Mrs. William J.

*Artists of Pittsburgh Ballet Theatre
 Photo: Aimee DiAndrea*

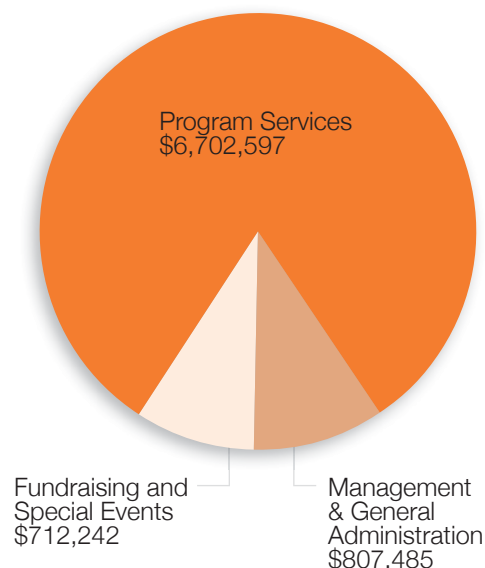
Simpson
 Ms. Margaret F. Sloan
 Mrs. Mary Lou Slovonik
 Ms. Elaine Small
 Barbara Smith
 Selene Smyda
 Jeannine Spinola
 James Spruill
 Joanne M. Starolis
 Ms. Karen Steare
 Mr. and Mrs. Raymond H.
 Steeb III
 Dr. Vilja K. Stein
 Drs. Michael and
 Beverly Steinfeld
 Mr. and Mrs. Norris Stephens
 Mr. Donald Stone
 Curtis and Rebecca Stratman
 Ms. Michelle Switala
 Mr. William Switala
 Ms. Rhoda E. Taylor
 Janice Taylor and
 Patrick Condo
 Mr. and Mrs. Robert W.
 Teagarden
 Diane and William Thalman
 Rollie and Kate Thomas
 Becky and Herb Torbin in
 memory of Norma Sobel
 Dr. and Mrs. Mordecai Treblow
 Bonnie Trucco
 Mica VanFossen
 Albin L. Vareha, Jr.
 Ms. Judith J. Wagner
 Ms. Jacqueline Walker
 Ms. Janet Walker
 Mr. James J. Wallaert
 Mr. and Mrs. Gealy W.
 Wallwork
 Mr. Robert T. Wargo
 Drs. Janet and
 Johnathan Waters
 Ms. Dorothy J. Weaver
 Ms. Joanne H. Weber
 Ms. Mary R. Werbaneth
 Mr. and Mrs. Raymond
 B. White
 Randy and Katy Whitlatch
 Mr. Richard Whittier
 Terry Wizeorek
 Mrs. Patricia A. Williams
 Mrs. Teresa M. Williams
 Sandra D. Williamson
 Mark and Chris Witman
 Aubrey Worek
 Dorothy and Henry Wriedt
 Dave and Donna Yohe
 Mrs. Peter J. Zikos
 John Zoscak
 Cynthia Zydell

financial overview

During the 2012-2013 Season, PBT continued a solid financial management trend by ending its seventh consecutive year with a positive change in unrestricted net assets from operations. During the 2012-2013 Season, programming and direct services to the community accounted for 82 percent of PBT's overall operating funds. In addition to strong support from foundations, corporate and government funders, PBT's family of individual donors contributed nearly 30 percent of PBT's contributed revenue during the 2012-2013 Season. In April, individual donors rose to a matching gift challenge from long-time PBT supporter Mr. Richard E. Rauh by contributing \$60,000 in new and increased gifts, exceeding the match goal by \$10,000.

USE OF OPERATING FUNDS

TOTAL: \$8,222,324



STATEMENTS OF CASH FLOWS

JUNE 30, 2013

CASH FLOWS FROM OPERATING ACTIVITIES

Changes in net assets	\$ 1,924,437
Adjustments to reconcile changes in net assets to net cash provided by (used in) operating activities:	
Depreciation and amortization	364,050
Bad debts	26,379
Net realized and unrealized (gains) losses on investments	(804,766)
Changes in assets and liabilities:	
Accounts receivable	(1,232)
Pledges receivable	(348,291)
Inventory	3,356
Prepaid expenses	(3,962)
Accounts payable and accrued expenses	(132,179)
Deferred revenue	81,531
Net Cash Provided By Operating Activities	1,109,323

CASH FLOWS FROM INVESTING ACTIVITIES

Purchase of fixed assets	(1,126,753)
Proceeds from sale of investments	3,338,205
Purchase of investments	(2,983,428)
Net Cash Used In Investing Activities	(771,976)

CASH FLOWS FROM FINANCING ACTIVITIES

Line of credit, net	(500,561)
Proceeds from long-term debt	552,000
Construction payable	107,600
Payments on long-term debt	(108,991)
Net Cash Provided By Financing Activities	50,048
Net Increase In Cash And Cash Equivalents	387,395

CASH AND CASH EQUIVALENTS

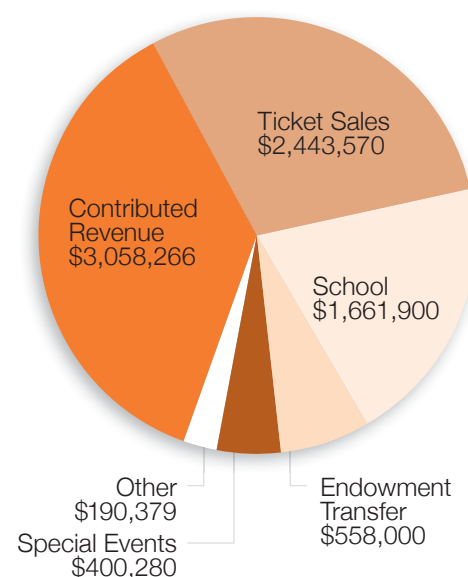
Beginning of year	800,715
End of year	\$1,188,110

SUPPLEMENTAL DISCLOSURE OF CASH FLOW INFORMATION

Cash paid during the year for interest	\$31,296
----------------------------------------	----------

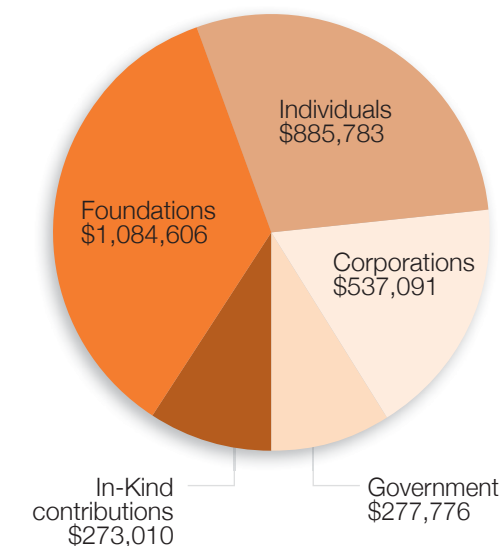
SOURCES OF OPERATING REVENUE

TOTAL: \$8,312,395



CONTRIBUTED OPERATING REVENUES BY SOURCE

TOTAL: \$3,058,266



STATEMENTS OF ACTIVITIES AND CHANGES IN NET ASSETS

JUNE 30, 2013

	Unrestricted	Temporarily Restricted	Permanently Restricted	Total
OPERATING REVENUE	\$4,696,129	—	—	\$4,696,129
OPERATING EXPENSES	(8,222,324)	—	—	(8,222,324)
NET REALIZED AND UNREALIZED GAINS (LOSSES), INTEREST AND DIVIDENDS	—	—	\$1,020,984	\$1,020,984
Changes In Net Assets Before Public And Private Support, Releases From Restrictions And Depreciation On Leaseholds, Machinery And Equipment And Land Improvements	(3,526,195)	—	1,020,984	(2,505,211)
PUBLIC AND PRIVATE SUPPORT	2,341,224	\$2,407,000	—	4,748,224
Changes In Net Assets Before Releases From Restrictions And Depreciation On Leaseholds, Machinery And Equipment And Land Improvements	(1,184,971)	2,407,000	1,020,984	2,243,013
NET ASSETS RELEASED FROM OPERATING RESTRICTIONS				
Investment income spending	558,000	—	(558,000)	—
Other support	717,042	(717,042)	—	—
Total Net Assets Released From Operating Restrictions	1,275,042	(717,042)	(558,000)	—
Changes In Net Assets From Operations	90,071	1,689,958	462,984	2,243,013
NET ASSETS RELEASED FROM CAPITAL RESTRICTIONS	1,053,377	(1,053,377)	—	—
Depreciation on leaseholds, machinery and equipment and land improvements	(318,576)	—	—	(318,576)
Changes In Net Assets	824,872	636,581	462,984	1,924,437
NET ASSETS				
Beginning of year	162,426	2,095,994	8,138,782	10,397,202
End of year	\$ 987,298	\$2,732,575	\$8,601,766	\$12,321,639

STATEMENT OF FINANCIAL POSITION

JUNE 30, 2013

	Unrestricted	Temporarily Restricted	Permanently Restricted	Total
CURRENT ASSETS				
Cash and cash equivalents	\$ 564,797	\$ 537,354	\$ 62,596	\$1,164,747
Investments	1,285	—	—	1,285
Accounts receivable	27,095	—	—	27,095
Pledges receivable	112,679	469,811	—	582,490
Inventory	12,977	—	—	12,977
Prepaid expenses	348,749	—	—	348,749
Total Current Assets	1,067,582	1,007,165	62,596	2,137,343
ENDOWMENT ASSETS				
Cash and cash equivalents	—	—	23,363	23,363
Investments	—	—	8,154,165	8,154,165
	—	—	8,177,528	8,177,528
INVESTMENT HELD BY TRUST	—	—	361,642	361,642
PLEDGES RECEIVABLE	—	289,990	—	289,990
FIXED ASSETS, NET	2,318,739	1,435,420	—	3,754,159
OTHER ASSETS				
Production assets, net	235,196	—	—	235,196
	\$3,621,517	\$2,732,575	\$8,601,766	\$14,955,858
CURRENT LIABILITIES				
Payments due within one year on long-term debt	\$638,396	—	—	\$638,396
Line of credit— construction	—	—	—	—
Accounts payable and accrued expenses	236,417	—	—	236,417
Construction costs payable	107,600	—	—	107,600
Deferred revenue	1,252,631	—	—	1,252,631
Total Current Liabilities	2,235,044	—	—	2,235,044
LONG-TERM DEBT	399,175	—	—	399,175
NET ASSETS	987,298	2,732,575	8,601,766	12,321,639
	\$3,621,517	\$2,732,575	\$8,601,766	\$14,955,858



Artists: Alexandra Kochis and Luca
Sbrizzi, Photo: Rich Sofranko

board of trustees

CHAIR OF
THE BOARD



James E.
Crockard III

VICE CHAIR
OF THE BOARD



Michael C.
LaRocco

TREASURER



Michael J.
Haver

SECRETARY



Kathleen
Miclot



Edwin
Beachler



Beth O.
Brown



Holly
Brubach



David Crawford
Bush



Carolyn M.
Byham



Christine
Camsuzou



Sean
Cassidy



The Hon.
Jay Costa



Susan
Cruz



Debra
Dermody



Timothy E.
Evans, Ph. D**



Dawn
Fleischner*



James
Tomlinson Fort



Freddie H.
Fu, M.D.



Jeanne
Gleason



James H.
Hardie



Dona
Hotopp



Robert
Kormos, M.D.



Douglas
Kreps



Demetrios
Mahramas



Peggy
McKnight



LeRoy
Metz II



Terrence S.
Orr



The Hon.
John Pippy



Mark
Popovich



Richard E.
Rauh



Maryann
Reabe



Diana
Reid



Lisa Saperstein,
D.P.M.



Vincent
Silvaggio, M.D.



Norma
Sobel**



Kristine
Sorensen



Shelley M.
Taylor



Becky
Torbin



Colleen
Byrne Travis



David F.
Tuthill



Hilary S.
Tyson



Ann Beyer
Vaughn



The Hon. Randy
Vulakovich



Winthrop
Watson



Markus
Weber



Bob
Wyche

TRUSTEE EMERITUS

Loti Falk Gaffney

HONORARY TRUSTEE

Violette Verdy

*Elected shortly after Fiscal Year 2012 year-end.

** PBT regrets the passing of beloved board members Norma Sobel and Dr. Timothy Evans during the 2012-2013 Season.

staff

EXECUTIVE STAFF

EXECUTIVE DIRECTOR
Harris N. Ferris

ASSISTANT TO THE EXECUTIVE
DIRECTOR
Rosemary Sterner

FINANCE

DIRECTOR OF OPERATIONS
& FINANCE
Jay Romano

ACCOUNTANT/
HUMAN RESOURCES MANAGER
Shelly Swartz

RECEPTIONIST/OFFICE MANAGER
Allison Hannon

MARKETING

DIRECTOR OF MARKETING &
COMMUNICATIONS
Aimee DiAndrea

TICKETING MANAGER
Tanaz Walendziewicz

GROUP SALES MANAGER
Robert Jessup

DESIGN AND NEW MEDIA MANAGER
Kelly Perkovich

MARKETING COORDINATOR
Meghan McNamara

CUSTOMER CARE
REPRESENTATIVES
Linda Cunko
Debbie Bizek
Lisa Marie Smith

DEVELOPMENT

DIRECTOR OF DEVELOPMENT
Lois Wholey

ASSOCIATE DIRECTOR OF
REGIONAL INITIATIVES
Nichole Gantshar

SPECIAL EVENTS MANAGER
Shayne Souleret

DEVELOPMENT MANAGER
Aziza El Feil

MANAGER OF INDIVIDUAL GIVING
Kelsey Russell

FOUNDATION RELATIONS AND
GRANTS MANAGER
Audra Allen

ARTS EDUCATION

DIRECTOR OF EDUCATION AND
COMMUNITY ENGAGEMENT
Alyssa Herzog Melby

MANAGER OF AUDIENCE
EDUCATION AND ARCHIVES
Lisa Auel

PRODUCTION

PRODUCTION MANAGER
Joe Lumia

STAGE MANAGER AND ASSISTANT
PRODUCTION MANAGER
Alicia Reece

STAGE MANAGEMENT INTERN
Kassondra Glenn

MASTER CARPENTER
Zachary Dwyer

ASSISTANT CARPENTER
Ronald Cully

PROPERTIES MASTER
Brad O'Connell

MASTER ELECTRICIAN
Kelli Brannigan

ASSISTANT ELECTRICIAN
Robert Taylor

WARDROBE SUPERVISOR
Kathleen Sullivan

TRANSPORTATION MANAGER
Charles Recker

COSTUME

COSTUMIER
Janet Marie Groom

COSTUME ASSISTANT
Kathryn DeCaria

MAKE-UP ARTIST AND
HAIR DRESSER
Sherry Debersen

STITCHERS
Donna Oxley, first hand
Kathleen Sullivan

SCHOOL

DIRECTORS
Dennis Marshall
Marjorie Grundvig

OPERATIONS DIRECTOR
Aaron Rinsema

PRINCIPALS
Janet Popeleski
Anastasia Wovchko
Robert Vickrey

COMMUNICATIONS MANAGER
Kylee Hesketh

OPERATIONS MANAGER AND
REGISTRAR
Rachael Jeffrey

ADMINISTRATIVE SUPPORT
Martha Adams
Mike Sweeney

BYHAM HOUSE STAFF
Rishala Broughton, House Director
Kelly McMurtry, Residence Assistant
Matthias Bodnar, Chef

CONSULTING PSYCHIATRIST
Antoine Douaihy, M.D.

FACULTY

Steven Annegarn, PBT Ballet Master
Marianna Tcherkassky, PBT Ballet Mistress
Ann Corrado, Pilates Coordinator
Pollyana Ribeiro, Full-Time Ballet
Andre Reyes, Full-Time Ballet
Kerra Alexander, Boyd Center
Allie Garcia
Hunter Finnegan
Shanna Gayer
Erin Harold
Genevieve Hower
Kaila Lewis
Maureen Lucas
Robert Moore
Jamie Murphy
Makoto Ono
Tamar Rachelle
Michelle Ramos
Shannon Redmond
Renee Smith
Toma Smith
Anthony Williams
Aleksandr Zankin

MUSICIANS

Yoland Collin, Company Pianist
Ellen Gozion, Full-Time Pianist
Bella Khanis, Full-Time Pianist
Juliet Winovich, Full-Time Pianist
Maria Caruso
Marc Giosi
Ian Green
Jack Hawn
Yang Liu
Michael Kemp
Edward Leonard
Qiping Sun
Lisa Wimer

ADMINISTRATION

INFORMATION SYSTEMS MANAGER
Joel LaFleur

BUILDING MAINTENANCE

Russell Childs
Frank Lopez

MEDICAL STAFF UPMC SPORTS MEDICINE

ORTHOPEDIC SURGEONS
Freddie H.K. Fu, M.D.
Vonda Wright, M.D.

PRIMARY CARE SPORTS

MEDICINE PHYSICIAN
David A. Stone, M.D.

FOOT AND ANKLE SURGEON
Dane Wukich, MD

CERTIFIED ATHLETIC TRAINER
Kathleen Nachazel, ATC

PHYSICAL THERAPISTS
Erica Coffey, P.T.
Danielle Hildebrand, P.T.

SPORTS NUTRITIONIST
Leslie Bonci, M.P.H., R.D.

SUPPLEMENTARY MEDICAL STAFF

PODIATRIST
Lisa Watters, D.P.M.

CHIROPRACTOR
Jeffrey Cohen, D.C.



Photo: Rich Sofranko

Back cover:
Artist: Alexandra Kochis
Photo: Aimee DiAndrea

PITTSBURGH BALLET THEATRE

2900 Liberty Avenue | Pittsburgh, PA 15201-1500
(p) 412-281-0360 | (f) 412-281-9901

www.pbt.org

